



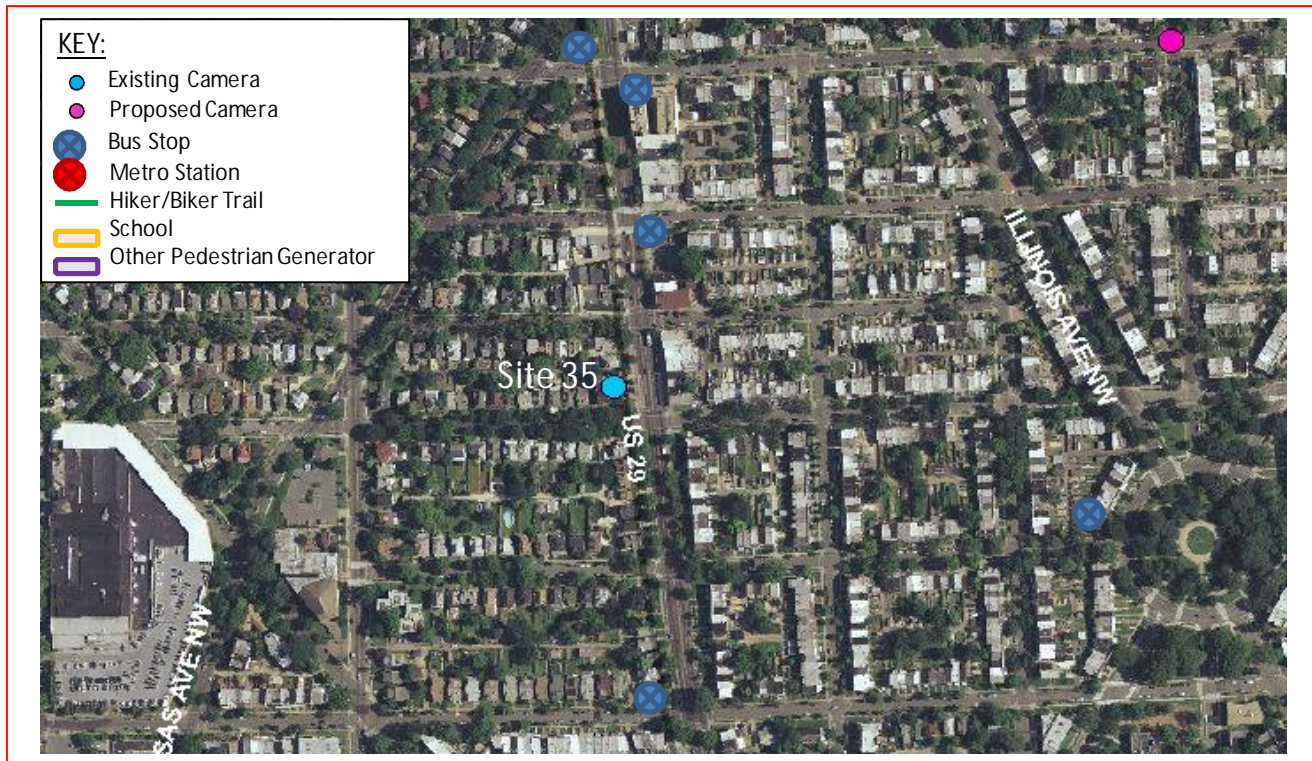
District Department of Transportation

## Speed Limit and Safety Nexus Studies for Automated Enforcement Locations in the District of Columbia

### 4800 Block Georgia Avenue NW

#### Study Area and Location

District	PSA	Ward	ANC	Phase	Description
4	404	4	4C	Existing	4800 Block Georgia Avenue Northwest Southbound



This existing speed camera is located in Ward 3 at the 4800 block of Georgia Avenue Northwest in the southbound direction. The speed camera is located on the northwest corner of the intersection of Georgia Avenue Northwest and Delafield Place Northwest. Georgia Avenue Northwest runs from Eastern Avenue Northwest in the north to U Street Northwest to the south, where it becomes 7<sup>th</sup> Street Northwest. The posted speed limit is 30 MPH. This speed camera was installed in May 2012.

W4 - 92





District Department of Transportation

4800 Block Georgia Avenue NW

## Field Assessment Summary

Georgia Avenue is assumed to run in a North-South direction, and is classified as a principal arterial. Georgia Avenue has two travel lanes in each direction. This site has the following characteristics:

- This site is located in a residential and commercial area with retail stores, apartment buildings, and single-family homes.
- There is on-street parking, sidewalks with curb and gutter, and drainage inlets on both sides of the street.
- The existing pavement is in good condition.
- There are two bus stops at the end of the block, one in each direction.



Looking Northbound



District Department of Transportation

4800 Block Georgia Avenue NW



Looking Southbound

## Speed Data Analysis

Posted Speed Limit (MPH)	30
Mean Speed (MPH)	15
85th Percentile Speed (MPH)	20
10 MPH Pace Speed	12-21 MPH
ADT	7,334

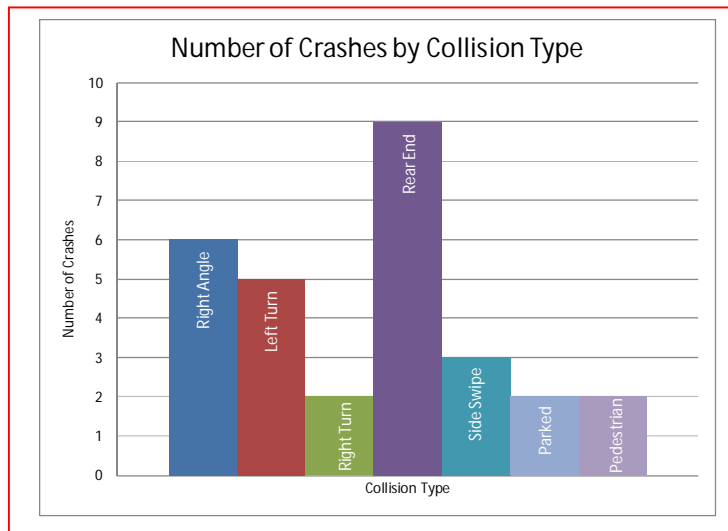
Both the mean speed and the 85<sup>th</sup> percentile speed are lower than the posted speed limit at this location. The 85<sup>th</sup> percentile speed is 10 MPH lower than the posted speed limit

## Crash Data Analysis

Between January 1, 2010 and December 31, 2012, there were a total of 29 crashes at this location. A breakdown of number of crashes by collision type can be found in the chart on the next page. The most common types of crashes at this location were Rear End (9 crashes), Right Angle (6 crashes), and Left Turn (5 crashes).



Severity			Weather			Surface condition			Light Condition		
Total	29										
Fatal	0	0.0%	Clear	25	86.2%	Dry	24	82.8%	Day	15	51.7%
Injury	12	41.4%	Rain	4	13.8%	Wet	4	13.8%	Night	14	48.3%
Bus	5	17.2%	Snow	0	0.0%	Snow/Ice	0	0.0%			
Taxi	3	10.3%									

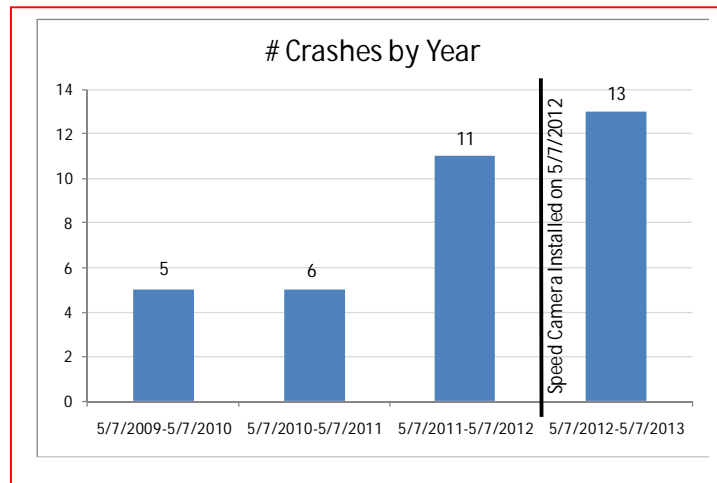


This speed camera was installed on 5/7/2012. A breakdown of crashes by year, showing the three years leading up to the camera installation and one year after the camera installation is shown on the next page. Crashes increased after the installation of the camera, though not by a substantial amount, after a trend on increasing in the years prior to the installation. There were two injury collisions before the speed camera installation and four injury collisions after the speed camera installation.



District Department of Transportation

4800 Block Georgia Avenue NW



The Georgia Avenue Corridor is listed as one of the top ten high frequency crash corridors from 2009 to 2011, according to the report *TRAFFIC SAFETY STATISTICS REPORT FOR THE DISTRICT OF COLUMBIA (2009-2011)*<sup>1</sup>. This site is located between two of the top five percent high accident locations in the District from 2010 to 2012: Florida Avenue NW and 7<sup>th</sup> Street NW; and Florida Avenue NE and New York Avenue NE.<sup>2</sup>

## Safety Nexus

This site presents the following safety considerations which may establish a nexus between the speed camera and traffic safety:

1. Speed Data – The speed data analysis shows travel speeds being much lower than the posted speed limit.
2. Crash Data – There was an elevated number of speed related crashes at this location, including rear end collisions. The number of crashes increased after the installation of the camera, though not by a substantial amount. The Georgia Avenue Corridor is listed as one of the top ten high frequency crash corridors from 2009 to 2011.
3. Field Assessment – The following site characteristics suggest a need for a safer travel environment:
  - a. This site is located in a residential area with houses and sidewalk on both sides of the street.
  - b. There is on-street parking at this location.
  - c. There are multiple bus stops in the area which generate pedestrian activity.

Although the speed data analysis showed the mean and 85<sup>th</sup> percentile speeds to be lower than the posted speed limit, due to the elevated number of speed-related crashes, and the specific site characteristics of a

<sup>1</sup> DDOT, *TRAFFIC SAFETY STATISTICS REPORT FOR THE DISTRICT OF COLUMBIA (2009-2011)*, pg. 80.

<sup>2</sup> DDOT, *Top 5% High Accident Locations Map for 2010-2012*



District Department of Transportation

4800 Block Georgia Avenue NW

residential area with pedestrian generators, there is a nexus between traffic safety and the speed camera at this location.

W4 - 97

# SAMMAT ENGINEERING SERVICES, LLC

1515 RISING RIDGE ROAD  
MOUNT AIRY, MD 21771

[www.sammateng.com](http://www.sammateng.com)

## 4800 block of Georgia Ave NW SB Speed

SB

Start Time	1 15	16 20	21 25	26 30	31 35	36 40	41 45	46 50	51 55	56 60	61 65	66 70	71 75	76 999	Total
11/09/13	*	*	*	*	*	*	*	*	*	*	*	*	*	*	*
01:00	*	*	*	*	*	*	*	*	*	*	*	*	*	*	*
02:00	14	25	12	1	0	0	0	0	0	0	0	0	0	0	52
03:00	10	40	16	5	1	0	0	0	0	0	0	0	0	0	72
04:00	19	37	16	5	1	0	0	0	0	0	0	0	0	0	78
05:00	25	51	30	7	3	1	0	0	0	0	0	0	0	0	117
06:00	34	69	72	17	1	0	0	0	0	0	0	0	0	0	193
07:00	60	127	68	15	2	0	0	0	0	0	0	0	0	0	272
08:00	65	165	89	23	1	0	0	0	0	0	0	0	0	0	343
09:00	72	179	83	23	1	0	0	0	0	0	0	0	0	0	358
10:00	92	192	90	4	0	0	0	0	0	0	0	0	0	0	378
11:00	99	212	57	1	0	0	0	0	0	0	0	0	0	0	369
12 PM	113	249	86	3	0	0	0	0	0	0	0	0	0	0	451
13:00	108	232	74	6	0	0	0	0	0	0	0	0	0	0	420
14:00	111	234	88	2	1	0	0	0	0	0	0	0	0	0	436
15:00	97	260	64	4	0	0	0	0	0	0	0	0	0	0	425
16:00	125	254	70	1	1	0	0	0	0	0	0	0	0	0	451
17:00	146	238	64	3	1	0	0	0	0	0	0	0	0	0	452
18:00	119	256	52	0	0	0	0	0	0	0	0	0	0	0	427
19:00	86	208	109	5	0	0	0	0	0	0	0	0	0	0	408
20:00	72	162	63	9	0	0	0	0	0	0	0	0	0	0	306
21:00	74	144	63	9	1	0	0	0	0	0	0	0	0	0	291
22:00	69	183	73	14	1	1	0	0	0	0	0	0	0	0	341
23:00	65	140	57	10	0	0	0	0	0	0	0	0	0	0	272
Total	1675	3657	1396	167	15	2	0	0	0	0	0	0	0	0	6912

# SAMMAT ENGINEERING SERVICES, LLC

1515 RISING RIDGE ROAD  
MOUNT AIRY, MD 21771

[www.sammateng.com](http://www.sammateng.com)

## 4800 block of Georgia Ave NW SB Speed

SB

Start Time	1	16	21	26	31	36	41	46	51	56	61	66	71	76	Total
	15	20	25	30	35	40	45	50	55	60	65	70	75	999	
11/10/13	48	115	47	7	0	0	0	0	0	0	0	0	0	0	217
01:00	32	65	42	6	1	0	0	0	0	0	0	0	0	0	146
02:00	15	27	9	8	0	0	0	0	0	0	0	0	0	0	59
03:00	0	0	0	0	0	0	0	0	0	0	0	0	0	0	0
04:00	*	*	*	*	*	*	*	*	*	*	*	*	*	*	*
05:00	*	*	*	*	*	*	*	*	*	*	*	*	*	*	*
06:00	*	*	*	*	*	*	*	*	*	*	*	*	*	*	*
07:00	*	*	*	*	*	*	*	*	*	*	*	*	*	*	*
08:00	*	*	*	*	*	*	*	*	*	*	*	*	*	*	*
09:00	*	*	*	*	*	*	*	*	*	*	*	*	*	*	*
10:00	*	*	*	*	*	*	*	*	*	*	*	*	*	*	*
11:00	*	*	*	*	*	*	*	*	*	*	*	*	*	*	*
12 PM	*	*	*	*	*	*	*	*	*	*	*	*	*	*	*
13:00	*	*	*	*	*	*	*	*	*	*	*	*	*	*	*
14:00	*	*	*	*	*	*	*	*	*	*	*	*	*	*	*
15:00	*	*	*	*	*	*	*	*	*	*	*	*	*	*	*
16:00	*	*	*	*	*	*	*	*	*	*	*	*	*	*	*
17:00	*	*	*	*	*	*	*	*	*	*	*	*	*	*	*
18:00	*	*	*	*	*	*	*	*	*	*	*	*	*	*	*
19:00	*	*	*	*	*	*	*	*	*	*	*	*	*	*	*
20:00	*	*	*	*	*	*	*	*	*	*	*	*	*	*	*
21:00	*	*	*	*	*	*	*	*	*	*	*	*	*	*	*
22:00	*	*	*	*	*	*	*	*	*	*	*	*	*	*	*
23:00	*	*	*	*	*	*	*	*	*	*	*	*	*	*	*
Total	95	207	98	21	1	0	0	0	0	0	0	0	0	0	422
Grand Total	1770	3864	1494	188	16	2	0	0	0	0	0	0	0	0	7334

15th Percentile : 8 MPH  
 50th Percentile : 15 MPH  
 85th Percentile : 20 MPH  
 95th Percentile : 24 MPH

Stats  
 Mean Speed(Average) : 15 MPH  
 10 MPH Pace Speed : 12-21 MPH  
 Number in Pace : 4312  
 Percent in Pace : 58.8%  
 Number of Vehicles > 30 MPH : 27  
 Percent of Vehicles > 30 MPH : 0.4%



# SAMMAT ENGINEERING SERVICES, LLC

1515 RISING RIDGE ROAD  
MOUNT AIRY, MD 21771

[www.sammateng.com](http://www.sammateng.com)

## 4800 block of Georgia Ave NW SB Volume

Start Time	09-Nov-13		10-Nov-13		11-Nov-13		Daily Average	
	Sat A.M.	P.M.	Sun A.M.	P.M.	Mon A.M.	P.M.	A.M.	P.M.
12:00	*	99	55	*	*	*	55	99
12:15	*	115	52	*	*	*	52	115
12:30	*	115	57	*	*	*	57	115
12:45	*	122	53	*	*	*	53	122
01:00	*	97	40	*	*	*	40	97
01:15	*	113	34	*	*	*	34	113
01:30	*	97	34	*	*	*	34	97
01:45	*	113	38	*	*	*	38	113
02:00	*	108	29	*	*	*	29	108
02:15	*	105	30	*	*	*	30	105
02:30	32	96	*	*	*	*	32	96
02:45	20	127	*	*	*	*	20	127
03:00	25	95	*	*	*	*	25	95
03:15	18	111	*	*	*	*	18	111
03:30	18	111	*	*	*	*	18	111
03:45	11	108	*	*	*	*	11	108
04:00	21	108	*	*	*	*	21	108
04:15	15	115	*	*	*	*	15	115
04:30	21	113	*	*	*	*	21	113
04:45	21	115	*	*	*	*	21	115
05:00	22	110	*	*	*	*	22	110
05:15	28	110	*	*	*	*	28	110
05:30	28	97	*	*	*	*	28	97
05:45	39	135	*	*	*	*	39	135
06:00	42	115	*	*	*	*	42	115
06:15	58	100	*	*	*	*	58	100
06:30	45	102	*	*	*	*	45	102
06:45	48	110	*	*	*	*	48	110
07:00	63	108	*	*	*	*	63	108
07:15	66	120	*	*	*	*	66	120
07:30	74	94	*	*	*	*	74	94
07:45	69	86	*	*	*	*	69	86
08:00	55	83	*	*	*	*	55	83
08:15	90	75	*	*	*	*	90	75
08:30	90	77	*	*	*	*	90	77
08:45	108	71	*	*	*	*	108	71
09:00	81	86	*	*	*	*	81	86
09:15	101	59	*	*	*	*	101	59
09:30	90	80	*	*	*	*	90	80
09:45	86	66	*	*	*	*	86	66
10:00	95	99	*	*	*	*	95	99
10:15	93	79	*	*	*	*	93	79
10:30	90	75	*	*	*	*	90	75
10:45	100	88	*	*	*	*	100	88
11:00	97	76	*	*	*	*	97	76
11:15	82	63	*	*	*	*	82	63
11:30	92	64	*	*	*	*	92	64
11:45	98	69	*	*	*	*	98	69
Total	2232	4680	422	0	0	0	2654	4680
Combined Total	6912		422		0		7334	
Peak	08:30	05:15	12:00				08:30	05:15
Vol.	380	457	217				380	457
P.H.F.	0.880	0.846	0.952				0.880	0.846
ADT	ADT 7,334		AADT 7,334					

## Accident Summary Report (R-8)

**Corridor:** GEORGIA AVE,NW From DELAFIELD PL,NW TO DECATUR ST,NW

**Time Period Covered:** From 01/01/2010 To 12/31/2012 **Prepared By:** Rahul Jain

**Prepared Date:** 9/15/2013

Total Number of Accident:	29	<b>Collision Type</b>	<b>#ACC</b>	<b>%</b>	<b>Collision Type</b>	<b>#ACC</b>	<b>%</b>
Total Number of Fatalities:	0	Right Angle:	6	20.7%	Fixed Object:	0	0.0%
Total Number of Injuries:	18	Left Turn:	5	17.2%	Ran Off Road:	0	0.0%
Total Number of Disabling Injuries:	3	Right Turn:	2	6.9%	Ped. Involved:	2	6.9%
Total Number of NonDisabling Injuries:	3	Rear End:	9	31.0%	Backing:	0	0.0%
Total Number of Pedestrians Involved:	1	Side Swiped:	3	10.3%	Non Collision:	0	0.0%
Total Number of Bicycles Involved:	0	Head On:	0	0.0%	Under/Over Ride:	0	0.0%
Total Number of Motorcycles Involved:	0	Parked:	2	6.9%	Unspecified:	0	0.0%
<b>Time of Day</b>				<b>Day of week</b>			
	<b>#ACC</b>	<b>%</b>			<b>#ACC</b>	<b>%</b>	
07:30 ~ 09:30:	1	3.4%		Sunday:	4	13.8%	
09:30 ~ 11:30:	1	3.4%		Monday:	3	10.3%	
11:30 ~ 13:30:	2	6.9%		Tuesday:	2	6.9%	
13:30 ~ 16:00:	4	13.8%		Wednesday:	7	24.1%	
16:00 ~ 18:30:	4	13.8%		Thursday:	2	6.9%	
18:30 ~ 07:30:	17	58.6%		Friday:	6	20.7%	
Unspecified:	0	0.0%		Saturday:	5	17.2%	
<b>Weather Condition</b>				<b>Surface Condition</b>			
	<b>#ACC</b>	<b>%</b>			<b>#ACC</b>	<b>%</b>	
Clear:	25	86.2%		Dry:	24	82.8%	
Rain:	4	13.8%		Wet:	4	13.8%	
Snow:	0	0.0%		Snow/Ice:	0	0.0%	
Sleet/Hail:	0	0.0%		Slush:	0	0.0%	
Fog/Mist:	0	0.0%		Water/Sand:	0	0.0%	
Crosswind/Blowing Sand:	0	0.0%		Repairing:	0	0.0%	
Unspecified:	0	0.0%		Unspecified:	1	3.4%	
<b>Type of Vehicle</b>				<b>Accident Severity Type</b>			
	<b>#VEH</b>	<b>%</b>			<b>#ACC</b>	<b>%</b>	
Passenger Car:	43	74.1%		Fatal Collision:	0	0.0%	
Bus:	5	8.6%		Injury Collision:	12	41.4%	
Truck:	1	1.7%		PDO Collision:	17	58.6%	
Taxi:	3	5.2%		<b>Light Condition</b>			
Minivan:	0	0.0%			<b>#ACC</b>	<b>%</b>	
Police/Emergency Vehicle:	2	3.4%		Daylight:	15	51.7%	
Motorcycle/Moped:	0	0.0%		Dawn/Dusk:	0	0.0%	
Bicycle:	0	0.0%		Dark(Lighted):	14	48.3%	
Fixed Object:	0	0.0%		Dark(Not Lighted):	0	0.0%	
Unspecified:	4	6.9%		Dark(Unknown Lighting):	0	0.0%	
				Unspecified:	0	0.0%	
<b>Contributing Factor</b>				<b>Pedestrian Actions</b>			
	<b>#VEH</b>	<b>%</b>			<b>#ACC</b>	<b>%</b>	
Driver: Speed:	0	0.0%		In Crosswalk with Signal:	0	0.0%	
Driver: Alcohol/Drug:	3	5.2%		In Crosswalk against Signal:	0	0.0%	
Driver: Electronic Device:	0	0.0%		In Crosswalk no Signal:	0	0.0%	
Driver: Others:	13	22.4%		In Unmarked Crosswalk:	0	0.0%	
Vehicle:	1	1.7%		Not in Crosswalk:	0	0.0%	
Roadway:	1	1.7%		From Between Parked Cars:	0	0.0%	
Unspecified:	40	69.0%		Unspecified:	1	100.0%	

13 Records are not approved as of 9/15/2013 12:25:46 PM

DC Department of Transportation - Traffic Accident Reporting and Analysis System

## Accident Summary Report (R-8)

**Corridor:** GEORGIA AVE,NW From DELAFIELD PL,NW TO DECATUR ST,NW

**Time Period Covered:** From 05/07/2009 To 05/07/2012

**Prepared By:** Rahul Jain

**Prepared Date:** 11/18/2012

		<b>Collision Type</b>	<b>#ACC</b>	<b>%</b>	<b>Collision Type</b>	<b>#ACC</b>	<b>%</b>
Total Number of Accident:	23	Right Angle:	4	17.4%	Fixed Object:	0	0.0%
Total Number of Fatalities:	0	Left Turn:	5	21.7%	Ran Off Road:	0	0.0%
Total Number of Injuries:	10	Right Turn:	2	8.7%	Ped. Involved:	1	4.3%
Total Number of Disabling Injuries:	1	Rear End:	5	21.7%	Backing:	2	8.7%
Total Number of NonDisabling Injuries:	1	Side Swiped:	4	17.4%	Non Collision:	0	0.0%
Total Number of Pedestrians Involved:	0	Head On:	0	0.0%	Under/Over Ride:	0	0.0%
Total Number of Bicycles Involved:	1	Parked:	0	0.0%	Unspecified:	0	0.0%
Total Number of Motorcycles Involved:	0						

<b>Time of Day</b>	<b>#ACC</b>	<b>%</b>	<b>Day of week</b>	<b>#ACC</b>	<b>%</b>
07:30 ~ 09:30:	2	8.7%	Sunday:	4	17.4%
09:30 ~ 11:30:	2	8.7%	Monday:	3	13.0%
11:30 ~ 13:30:	2	8.7%	Tuesday:	2	8.7%
13:30 ~ 16:00:	2	8.7%	Wednesday:	6	26.1%
16:00 ~ 18:30:	5	21.7%	Thursday:	1	4.3%
18:30 ~ 07:30:	10	43.5%	Friday:	4	17.4%
Unspecified:	0	0.0%	Saturday:	3	13.0%

<b>Weather Condition</b>	<b>#ACC</b>	<b>%</b>	<b>Surface Condition</b>	<b>#ACC</b>	<b>%</b>
Clear:	18	78.3%	Dry:	18	78.3%
Rain:	5	21.7%	Wet:	4	17.4%
Snow:	0	0.0%	Snow/Ice:	1	4.3%
Sleet/Hail:	0	0.0%	Slush:	0	0.0%
Fog/Mist:	0	0.0%	Water/Sand:	0	0.0%
Crosswind/Blowing Sand:	0	0.0%	Repairing:	0	0.0%
Unspecified:	0	0.0%	Unspecified:	0	0.0%

<b>Type of Vehicle</b>	<b>#VEH</b>	<b>%</b>	<b>Accident Severity Type</b>	<b>#ACC</b>	<b>%</b>
Passenger Car:	31	70.5%	Fatal Collision:	0	0.0%
Bus:	4	9.1%	Injury Collision:	8	34.8%
Truck:	1	2.3%	PDO Collision:	15	65.2%
Taxi:	3	6.8%			
Minivan:	0	0.0%	<b>Light Condition</b>	<b>#ACC</b>	<b>%</b>
Police/Emergency Vehicle:	2	4.5%	Daylight:	14	60.9%
Motorcycle/Moped:	0	0.0%	Dawn/Dusk:	0	0.0%
Bicycle:	1	2.3%	Dark(Lighted):	9	39.1%
Fixed Object:	0	0.0%	Dark(Not Lighted):	0	0.0%
Unspecified:	2	4.5%	Dark(Unknown Lighting):	0	0.0%
			Unspecified:	0	0.0%

<b>Contributing Factor</b>	<b>#VEH</b>	<b>%</b>	<b>Pedestrian Actions</b>	<b>#ACC</b>	<b>%</b>
Driver: Speed:	0	0.0%	In Crosswalk with Signal:	0	0.0%
Driver: Alcohol/Drug:	0	0.0%	In Crosswalk against Signal:	0	0.0%
Driver: Electronic Device:	0	0.0%	In Crosswalk no Signal:	0	0.0%
Driver: Others:	11	25.0%	In Unmarked Crosswalk:	0	0.0%
Vehicle:	0	0.0%	Not in Crosswalk:	0	0.0%
Roadway:	1	2.3%	From Between Parked Cars:	0	0.0%
Unspecified:	32	72.7%	Unspecified:	0	0.0%

7 Records are not approved as of 11/18/2013 9:23:19 AM

## Accident Summary Report (R-8)

**Corridor:** GEORGIA AVE,NW From DELAFIELD PL,NW TO DECATUR ST,NW

**Time Period Covered:** From 05/07/2009 To 05/07/2010

**Prepared By:** Rahul Jain

**Prepared Date:** 11/18/2010

Total Number of Accident:	5	<b>Collision Type</b>	<b>#ACC</b>	<b>%</b>	<b>Collision Type</b>	<b>#ACC</b>	<b>%</b>
Total Number of Fatalities:	0	Right Angle:	2	40.0%	Fixed Object:	0	0.0%
Total Number of Injuries:	2	Left Turn:	2	40.0%	Ran Off Road:	0	0.0%
Total Number of Disabling Injuries:	0	Right Turn:	0	0.0%	Ped. Involved:	0	0.0%
Total Number of NonDisabling Injuries:	0	Rear End:	0	0.0%	Backing:	0	0.0%
Total Number of Pedestrians Involved:	0	Side Swiped:	1	20.0%	Non Collision:	0	0.0%
Total Number of Bicycles Involved:	1	Head On:	0	0.0%	Under/Over Ride:	0	0.0%
Total Number of Motorcycles Involved:	0	Parked:	0	0.0%	Unspecified:	0	0.0%
<b>Time of Day</b>				<b>#ACC</b>	<b>%</b>	<b>Day of week</b>	
07:30 ~ 09:30:				1	20.0%	Sunday:	
09:30 ~ 11:30:				0	0.0%	Monday:	
11:30 ~ 13:30:				1	20.0%	Tuesday:	
13:30 ~ 16:00:				1	20.0%	Wednesday:	
16:00 ~ 18:30:				1	20.0%	Thursday:	
18:30 ~ 07:30:				1	20.0%	Friday:	
Unspecified:				0	0.0%	Saturday:	
<b>Weather Condition</b>				<b>#ACC</b>	<b>%</b>	<b>Surface Condition</b>	
Clear:				3	60.0%	Dry:	
Rain:				2	40.0%	Wet:	
Snow:				0	0.0%	Snow/Ice:	
Sleet/Hail:				0	0.0%	Slush:	
Fog/Mist:				0	0.0%	Water/Sand:	
Crosswind/Blowing Sand:				0	0.0%	Repairing:	
Unspecified:				0	0.0%	Unspecified:	
<b>Type of Vehicle</b>				<b>#VEH</b>	<b>%</b>	<b>Accident Severity Type</b>	
Passenger Car:				7	70.0%	Fatal Collision:	
Bus:				1	10.0%	Injury Collision:	
Truck:				0	0.0%	PDO Collision:	
Taxi:				0	0.0%		
Minivan:				0	0.0%	<b>Light Condition</b>	
Police/Emergency Vehicle:				0	0.0%	Daylight:	
Motorcycle/Moped:				0	0.0%	Dawn/Dusk:	
Bicycle:				1	10.0%	Dark(Lighted):	
Fixed Object:				0	0.0%	Dark(Not Lighted):	
Unspecified:				1	10.0%	Dark(Unknown Lighting):	
						Unspecified:	
<b>Contributing Factor</b>				<b>#VEH</b>	<b>%</b>	<b>Pedestrian Actions</b>	
Driver: Speed:				0	0.0%	In Crosswalk with Signal:	
Driver: Alcohol/Drug:				0	0.0%	In Crosswalk against Signal:	
Driver: Electronic Device:				0	0.0%	In Crosswalk no Signal:	
Driver: Others:				3	30.0%	In Unmarked Crosswalk:	
Vehicle:				0	0.0%	Not in Crosswalk:	
Roadway:				1	10.0%	From Between Parked Cars:	
Unspecified:				6	60.0%	Unspecified:	

1 Records are not approved as of 11/18/2013 9:20:43 AM

DC Department of Transportation - Traffic Accident Reporting and Analysis System

## Accident Summary Report (R-8)

**Corridor:** GEORGIA AVE,NW From DELAFIELD PL,NW TO DECATUR ST,NW  
**Time Period Covered:** From 05/07/2010 To 05/07/2011    **Prepared By:** Rahul Jain    **Prepared Date:** 11/18/2011

		<b>Collision Type</b>	<b>#ACC</b>	<b>%</b>	<b>Collision Type</b>	<b>#ACC</b>	<b>%</b>
Total Number of Accident:	5	Right Angle:	1	20.0%	Fixed Object:	0	0.0%
Total Number of Fatalities:	0	Left Turn:	2	40.0%	Ran Off Road:	0	0.0%
Total Number of Injuries:	2	Right Turn:	0	0.0%	Ped. Involved:	0	0.0%
Total Number of Disabling Injuries:	1	Rear End:	2	40.0%	Backing:	0	0.0%
Total Number of NonDisabling Injuries:	0	Side Swiped:	0	0.0%	Non Collision:	0	0.0%
Total Number of Pedestrians Involved:	0	Head On:	0	0.0%	Under/Over Ride:	0	0.0%
Total Number of Bicycles Involved:	0	Parked:	0	0.0%	Unspecified:	0	0.0%
Total Number of Motorcycles Involved:	0						

<b>Time of Day</b>	<b>#ACC</b>	<b>%</b>	<b>Day o fweek</b>	<b>#ACC</b>	<b>%</b>
07:30 ~ 09:30:	0	0.0%	Sunday:	0	0.0%
09:30 ~ 11:30:	1	20.0%	Monday:	1	20.0%
11:30 ~ 13:30:	1	20.0%	Tuesday:	1	20.0%
13:30 ~ 16:00:	1	20.0%	Wednesday:	1	20.0%
16:00 ~18:30:	0	0.0%	Thursday:	0	0.0%
18:30 ~ 07:30:	2	40.0%	Friday:	0	0.0%
Unspecified:	0	0.0%	Saturday:	2	40.0%

<b>Weather Condition</b>	<b>#ACC</b>	<b>%</b>	<b>Surface Condition</b>	<b>#ACC</b>	<b>%</b>
Clear:	5	100.0%	Dry:	5	100.0%
Rain:	0	0.0%	Wet:	0	0.0%
Snow:	0	0.0%	Snow/Ice:	0	0.0%
Sleet/Hail:	0	0.0%	Slush:	0	0.0%
Fog/Mist:	0	0.0%	Water/Sand:	0	0.0%
Crosswind/Blowing Sand:	0	0.0%	Repairing:	0	0.0%
Unspecified:	0	0.0%	Unspecified:	0	0.0%

<b>Type of Vehicle</b>	<b>#VEH</b>	<b>%</b>	<b>Accident Severity Type</b>	<b>#ACC</b>	<b>%</b>
Passenger Car:	8	80.0%	Fatal Collision:	0	0.0%
Bus:	0	0.0%	Injury Collision:	2	40.0%
Truck:	0	0.0%	PDO Collision:	3	60.0%
Taxi:	2	20.0%			
Minivan:	0	0.0%	<b>Light Condition</b>	<b>#ACC</b>	<b>%</b>
Police/Emergency Vehicle:	0	0.0%	Daylight:	3	60.0%
Motorcycle/Moped:	0	0.0%	Dawn/Dusk:	0	0.0%
Bicycle:	0	0.0%	Dark(Lighted):	2	40.0%
Fixed Object:	0	0.0%	Dark(Not Lighted):	0	0.0%
Unspecified:	0	0.0%	Dark(Unknown Lighting):	0	0.0%
			Unspecified:	0	0.0%

<b>Contributing Factor</b>	<b>#VEH</b>	<b>%</b>	<b>Pedestrian Actions</b>	<b>#ACC</b>	<b>%</b>
Driver: Speed:	0	0.0%	In Crosswalk with Signal:	0	0.0%
Driver: Alcohol/Drug:	0	0.0%	In Crosswalk against Signal:	0	0.0%
Driver: Electronic Device:	0	0.0%	In Crosswalk no Signal:	0	0.0%
Driver: Others:	3	30.0%	In Unmarked Crosswalk:	0	0.0%
Vehicle:	0	0.0%	Not in Crosswalk:	0	0.0%
Roadway:	0	0.0%	From Between Parked Cars:	0	0.0%
Unspecified:	7	70.0%	Unspecified:	0	0.0%

2 Records are not approved as of 11/18/2013 9:19:23 AM

## Accident Summary Report (R-8)

**Corridor:** GEORGIA AVE,NW From DELAFIELD PL,NW TO DECATUR ST,NW

**Time Period Covered:** From 05/07/2011 To 05/07/2012

**Prepared By:** Rahul Jain

**Prepared Date:** 11/18/2012

		<b>Collision Type</b>	<b>#ACC</b>	<b>%</b>	<b>Collision Type</b>	<b>#ACC</b>	<b>%</b>
Total Number of Accident:	11	Right Angle:	1	9.1%	Fixed Object:	0	0.0%
Total Number of Fatalities:	0	Left Turn:	1	9.1%	Ran Off Road:	0	0.0%
Total Number of Injuries:	6	Right Turn:	2	18.2%	Ped. Involved:	1	9.1%
Total Number of Disabling Injuries:	0	Rear End:	3	27.3%	Backing:	0	0.0%
Total Number of NonDisabling Injuries:	1	Side Swiped:	3	27.3%	Non Collision:	0	0.0%
Total Number of Pedestrians Involved:	0	Head On:	0	0.0%	Under/Over Ride:	0	0.0%
Total Number of Bicycles Involved:	0	Parked:	0	0.0%	Unspecified:	0	0.0%
Total Number of Motorcycles Involved:	0						

<b>Time of Day</b>	<b>#ACC</b>	<b>%</b>	<b>Day of week</b>	<b>#ACC</b>	<b>%</b>
07:30 ~ 09:30:	1	9.1%	Sunday:	2	18.2%
09:30 ~ 11:30:	0	0.0%	Monday:	1	9.1%
11:30 ~ 13:30:	0	0.0%	Tuesday:	0	0.0%
13:30 ~ 16:00:	0	0.0%	Wednesday:	4	36.4%
16:00 ~18:30:	3	27.3%	Thursday:	1	9.1%
18:30 ~ 07:30:	7	63.6%	Friday:	2	18.2%
Unspecified:	0	0.0%	Saturday:	1	9.1%

<b>Weather Condition</b>	<b>#ACC</b>	<b>%</b>	<b>Surface Condition</b>	<b>#ACC</b>	<b>%</b>
Clear:	9	81.8%	Dry:	9	81.8%
Rain:	2	18.2%	Wet:	2	18.2%
Snow:	0	0.0%	Snow/Ice:	0	0.0%
Sleet/Hail:	0	0.0%	Slush:	0	0.0%
Fog/Mist:	0	0.0%	Water/Sand:	0	0.0%
Crosswind/Blowing Sand:	0	0.0%	Repairing:	0	0.0%
Unspecified:	0	0.0%	Unspecified:	0	0.0%

<b>Type of Vehicle</b>	<b>#VEH</b>	<b>%</b>	<b>Accident Severity Type</b>	<b>#ACC</b>	<b>%</b>
Passenger Car:	14	66.7%	Fatal Collision:	0	0.0%
Bus:	3	14.3%	Injury Collision:	4	36.4%
Truck:	1	4.8%	PDO Collision:	7	63.6%
Taxi:	1	4.8%			
Minivan:	0	0.0%	<b>Light Condition</b>	<b>#ACC</b>	<b>%</b>
Police/Emergency Vehicle:	2	9.5%	Daylight:	6	54.5%
Motorcycle/Moped:	0	0.0%	Dawn/Dusk:	0	0.0%
Bicycle:	0	0.0%	Dark(Lighted):	5	45.5%
Fixed Object:	0	0.0%	Dark(Not Lighted):	0	0.0%
Unspecified:	0	0.0%	Dark(Unknown Lighting):	0	0.0%
			Unspecified:	0	0.0%

<b>Contributing Factor</b>	<b>#VEH</b>	<b>%</b>	<b>Pedestrian Actions</b>	<b>#ACC</b>	<b>%</b>
Driver: Speed:	0	0.0%	In Crosswalk with Signal:	0	0.0%
Driver: Alcohol/Drug:	0	0.0%	In Crosswalk against Signal:	0	0.0%
Driver: Electronic Device:	0	0.0%	In Crosswalk no Signal:	0	0.0%
Driver: Others:	5	23.8%	In Unmarked Crosswalk:	0	0.0%
Vehicle:	0	0.0%	Not in Crosswalk:	0	0.0%
Roadway:	0	0.0%	From Between Parked Cars:	0	0.0%
Unspecified:	16	76.2%	Unspecified:	0	0.0%

4 Records are not approved as of 11/18/2013 9:17:43 AM

DC Department of Transportation - Traffic Accident Reporting and Analysis System

## Accident Summary Report (R-8)

**Corridor:** GEORGIA AVE,NW From DELAFIELD PL,NW TO DECATUR ST,NW

**Time Period Covered:** From 05/08/2012 To 05/08/2013

**Prepared By:** Rahul Jain

**Prepared Date:** 11/18/2013

Total Number of Accident:	13	<b>Collision Type</b>	<b>#ACC</b>	<b>%</b>	<b>Collision Type</b>	<b>#ACC</b>	<b>%</b>
Total Number of Fatalities:	0	Right Angle:	2	15.4%	Fixed Object:	0	0.0%
Total Number of Injuries:	8	Left Turn:	2	15.4%	Ran Off Road:	0	0.0%
Total Number of Disabling Injuries:	2	Right Turn:	0	0.0%	Ped. Involved:	1	7.7%
Total Number of NonDisabling Injuries:	2	Rear End:	5	38.5%	Backing:	0	0.0%
Total Number of Pedestrians Involved:	1	Side Swiped:	1	7.7%	Non Collision:	0	0.0%
Total Number of Bicycles Involved:	0	Head On:	0	0.0%	Under/Over Ride:	0	0.0%
Total Number of Motorcycles Involved:	0	Parked:	2	15.4%	Unspecified:	0	0.0%
<b>Time of Day</b>				<b>#ACC</b>	<b>%</b>	<b>Day of week</b>	
07:30 ~ 09:30:				0	0.0%	Sunday:	
09:30 ~ 11:30:				0	0.0%	Monday:	
11:30 ~ 13:30:				0	0.0%	Tuesday:	
13:30 ~ 16:00:				3	23.1%	Wednesday:	
16:00 ~ 18:30:				1	7.7%	Thursday:	
18:30 ~ 07:30:				9	69.2%	Friday:	
Unspecified:				0	0.0%	Saturday:	
<b>Weather Condition</b>				<b>#ACC</b>	<b>%</b>	<b>Surface Condition</b>	
Clear:				12	92.3%	Dry:	
Rain:				0	0.0%	Wet:	
Snow:				0	0.0%	Snow/Ice:	
Sleet/Hail:				0	0.0%	Slush:	
Fog/Mist:				1	7.7%	Water/Sand:	
Crosswind/Blowing Sand:				0	0.0%	Repairing:	
Unspecified:				0	0.0%	Unspecified:	
<b>Type of Vehicle</b>				<b>#VEH</b>	<b>%</b>	<b>Accident Severity Type</b>	
Passenger Car:				19	70.4%	Fatal Collision:	
Bus:				2	7.4%	Injury Collision:	
Truck:				1	3.7%	PDO Collision:	
Taxi:				0	0.0%	<b>Light Condition</b>	
Minivan:				0	0.0%	Daylight:	
Police/Emergency Vehicle:				0	0.0%	Dawn/Dusk:	
Motorcycle/Moped:				0	0.0%	Dark(Lighted):	
Bicycle:				0	0.0%	Dark(Not Lighted):	
Fixed Object:				0	0.0%	Dark(Unknown Lighting):	
Unspecified:				5	18.5%	Unspecified:	
<b>Contributing Factor</b>				<b>#VEH</b>	<b>%</b>	<b>Pedestrian Actions</b>	
Driver: Speed:				0	0.0%	In Crosswalk with Signal:	
Driver: Alcohol/Drug:				3	11.1%	In Crosswalk against Signal:	
Driver: Electronic Device:				0	0.0%	In Crosswalk no Signal:	
Driver: Others:				6	22.2%	In Unmarked Crosswalk:	
Vehicle:				1	3.7%	Not in Crosswalk:	
Roadway:				0	0.0%	From Between Parked Cars:	
Unspecified:				17	63.0%	Unspecified:	

9 Records are not approved as of 11/18/2013 9:14:13 AM