



Revitalization of S Street NW
from 7th Street NW to Florida Avenue NW

d.

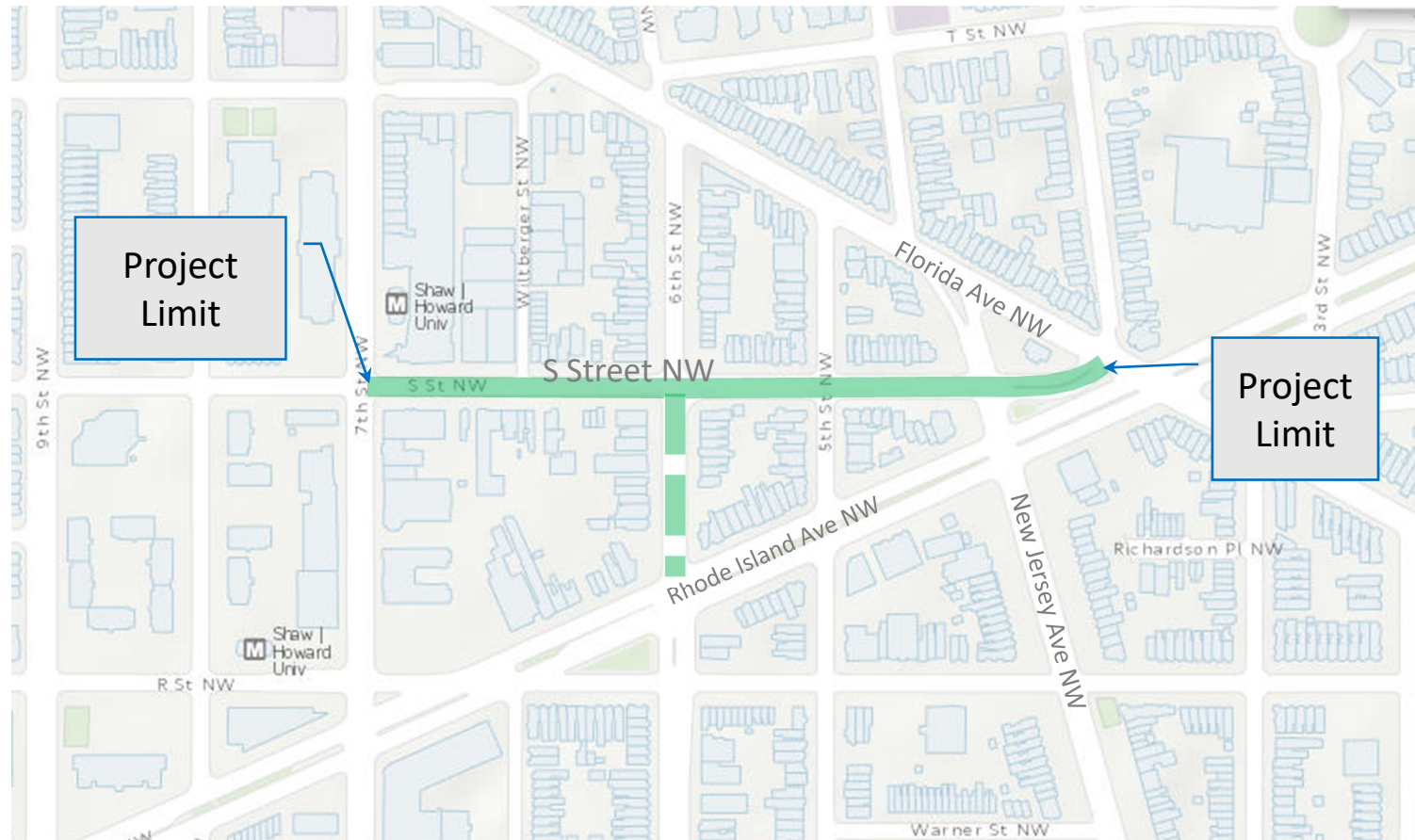
Public Meeting #1

January 8, 2020

Tonight's Meeting

- Project Team Introductions
- Brief Presentation
- Open House
 - *View Displays*
 - *Speak with Project Team*
- Fill Out Comment Form/Title 6 Data
- Sign up for Project Mailing List

S Street NW - Project Location

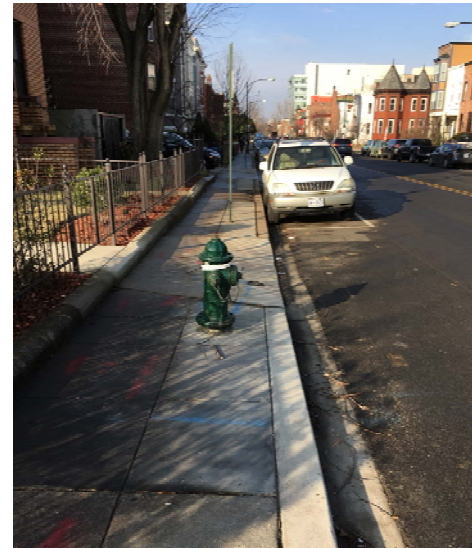


S Street NW from 7th Street NW to Florida Avenue NW

S St NW - Existing Conditions

7th Street NW to
New Jersey Ave, NW

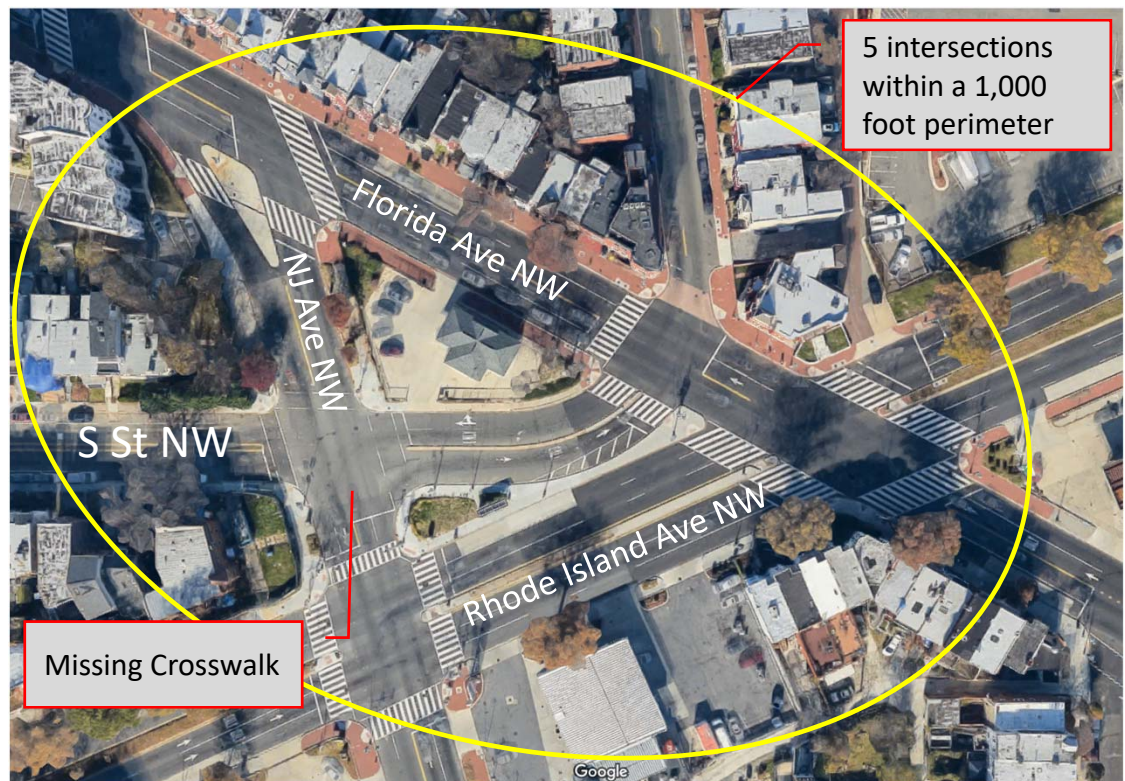
- Obstructions in sidewalks
- Narrow sidewalks
- Substandard sidewalk ramps (ADA ramps)
- Inconsistent lighting
- Irregular surfaces (patching, settling)



S St NW - Existing Conditions

New Jersey Ave, NW to
Florida Ave, NW

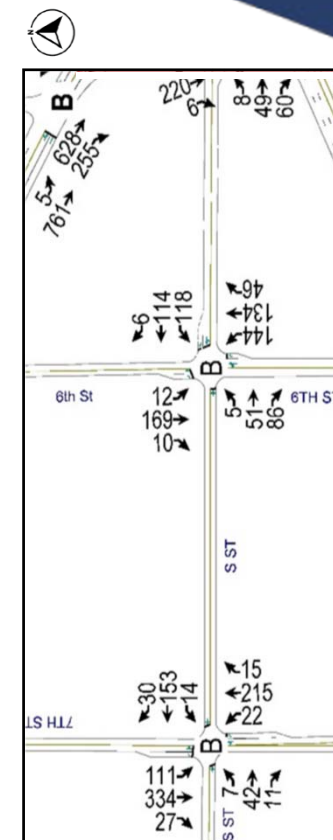
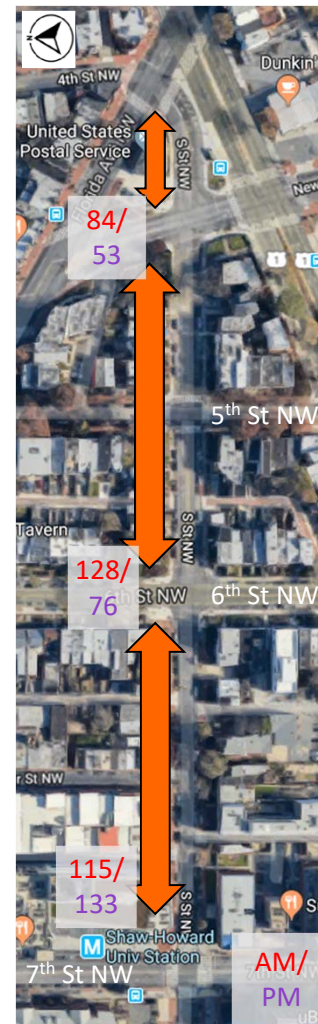
- Consecutive, closely spaced intersections
- “Blind Spots” due to intersection skew angle
- Sidewalk/Crosswalk gaps and deficiencies



Existing Traffic

S Street NW, 7th Street NW to New Jersey Ave, NW

- Heavy traffic between 4th Street NW and 6th Street NW during rush hours
- Narrow lane widths west of 6th Street may produce traffic calming effect
- Good Levels of Service (LOS) along corridor intersections (B & C)
- Heavy pedestrian volumes along north side of S St
- Other traffic concerns observed by the community?

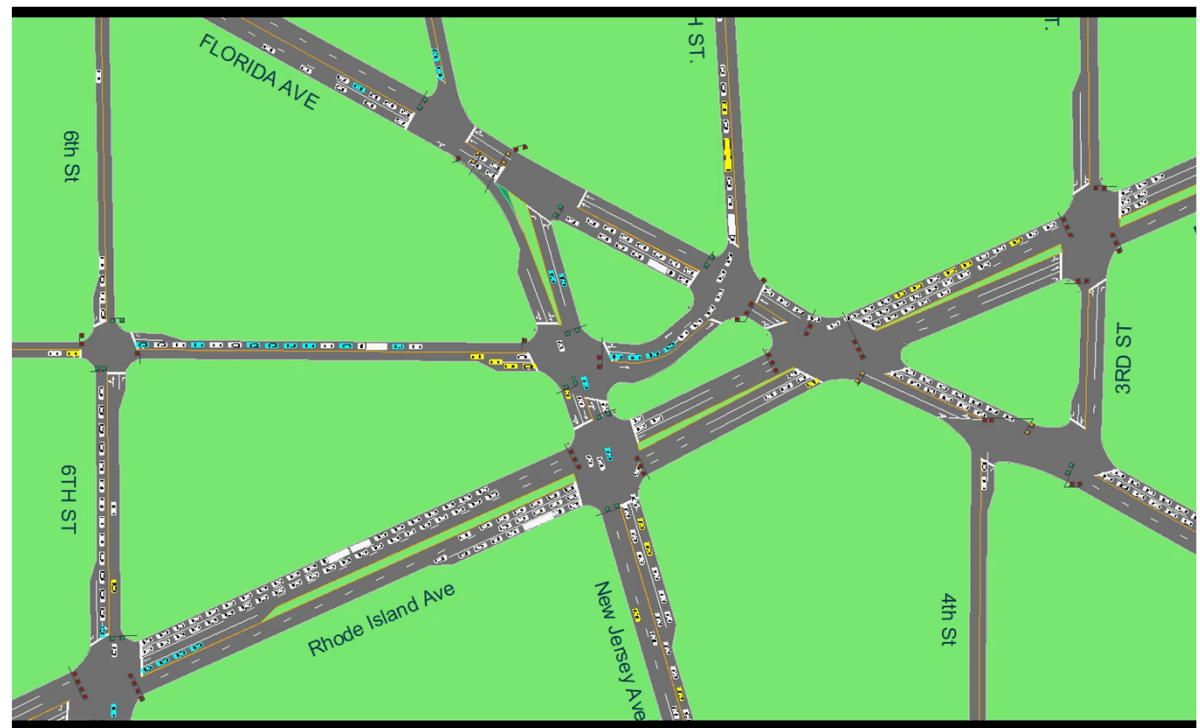


AM Peak Hour Vehicle
Volume Map (above);
Peak Hour Pedestrian
Volume Highlights (left)

Existing Traffic

Intersections of S St, New Jersey Ave, Florida Ave and Rhode Island Ave, NW

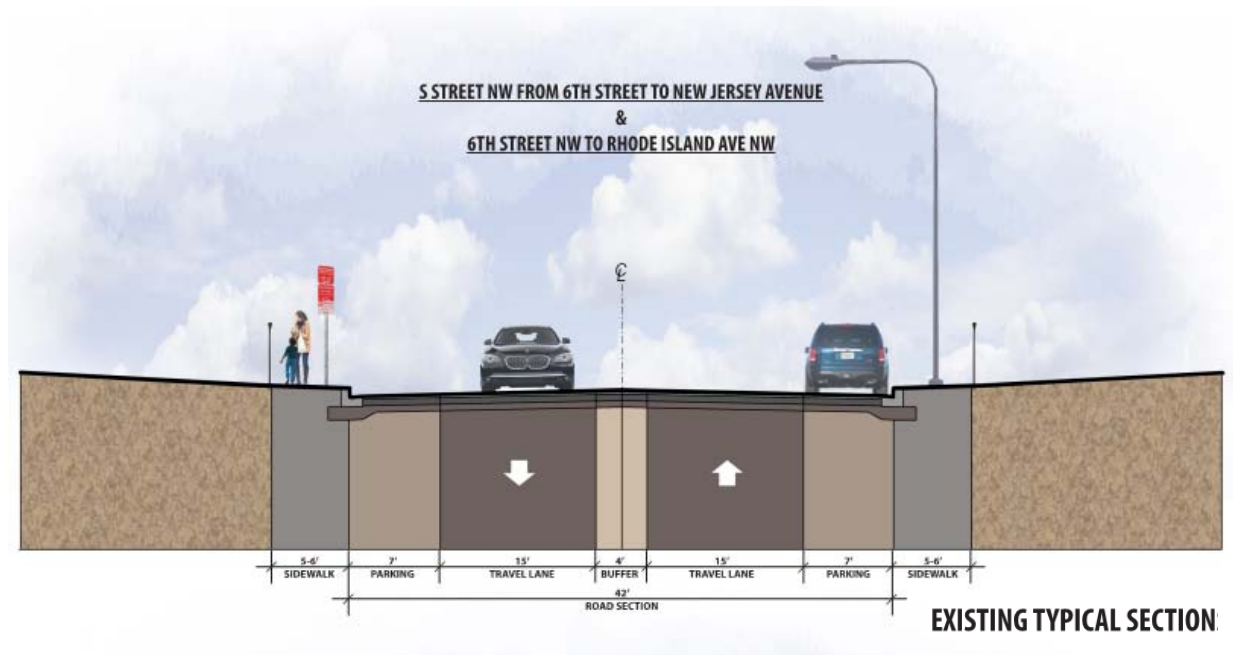
- Heavy traffic on all three roadways creating the “triangle” (NJ, RI, Florida) surrounding S Street NW
- NB & SB lanes on NJ Ave back-up into the intersection of S St and NJ Ave
- NWB lanes on Florida back-up into the intersection of Florida and Rhode Island
- S Street traffic appears to block other movements



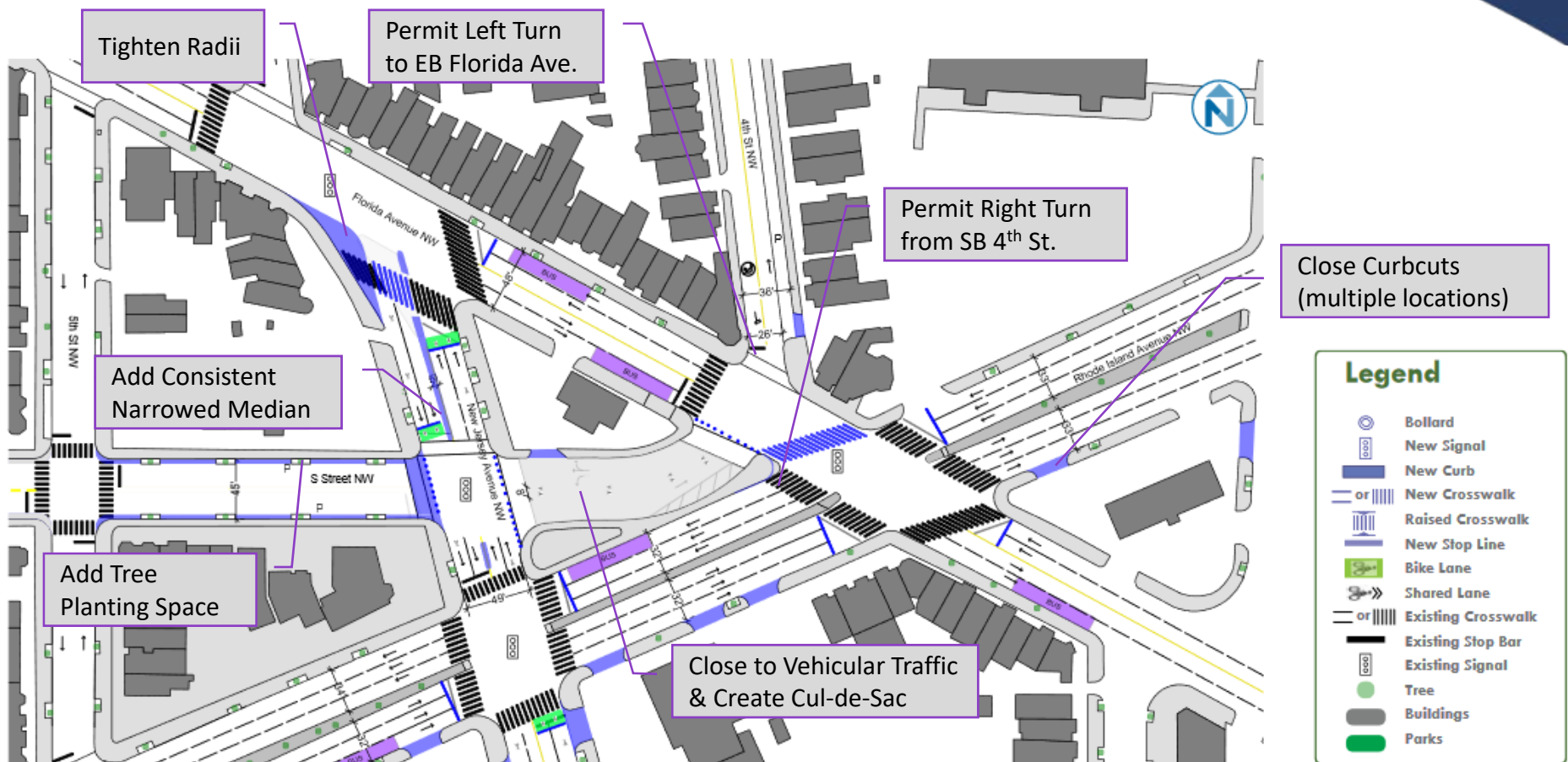
Traffic Simulation (during morning rush hour)

Project Goals

- Improve safety for all travel modes
- Enhance pedestrian connectivity
- Discourage speeding
- Upgrade deficient features
 - *Sidewalk ramps*
(“ADA ramps”)
 - *Deteriorating pavement/curbs/*
walkways
 - *Lighting*



2014 Mid City East Livability Study Recommendations



S Street NW from 7th Street NW to Florida Avenue NW

Potential Improvements

- 7th Street, NW to New Jersey Ave, NW
 - Reconstruct, relocate and/or widen sidewalk space (sidewalk + buffer)
 - Reconstruct sidewalk (ADA) ramps
 - Adjust utility locations as needed
 - Street Trees
 - Stormwater Management “Green Infrastructure”
 - Upgrade lighting
 - Spot improvements: pavement, drainage, signage
 - Traffic calming techniques

Rendering of sidewalk widening with green space



Potential Improvements

- New Jersey Avenue, NW to Florida Avenue, NW
 - Provide adequate sidewalk widths/eliminate obstructions
 - Reconfigure or reassign travel lanes
 - Driveway/Curb Cut Modifications
 - Pavement markings and signage
 - Investigate signal timing adjustments



S St NW heading east toward Florida Ave NW

National Historic Preservation Act (Section 106)

1. Identify the location and types of cultural resources
2. Evaluate cultural resources for eligibility for listing in the National Register of Historic Places (NRHP)
3. Assess project effects on historic properties (those resources considered NRHP-eligible)
4. Resolve adverse effects through consultation and implementation of mitigation measures



White Cross Bakery

Next Steps

- Receive and consider public comment January 2020
- Develop alternative options to meet goals of study and what we hear tonight Through April 2020
- Hold Public Meeting No. 2 Spring 2020
- Conduct Environmental Review and select build alternative Through Summer 2020
- Proceed to design Fall 2020
- Complete Design Early 2022
- Begin Construction *(pending funding availability and completion of DC Water project)* 2023

Contacts

DDOT Project Manager

Abdullahi Mohamed

202-671-4614

abdullahi.mohamed@dc.gov

Public Outreach Coordinator

Jerrell Johnson

202-518-9101

Jerrell@tbaconnects.com

Website: SstreetNW-revitalization.com

We Want Your Feedback!

- View displays and speak with project team representatives
- Add “Post-it notes” to maps
- Fill out Title 6 / comment forms

