



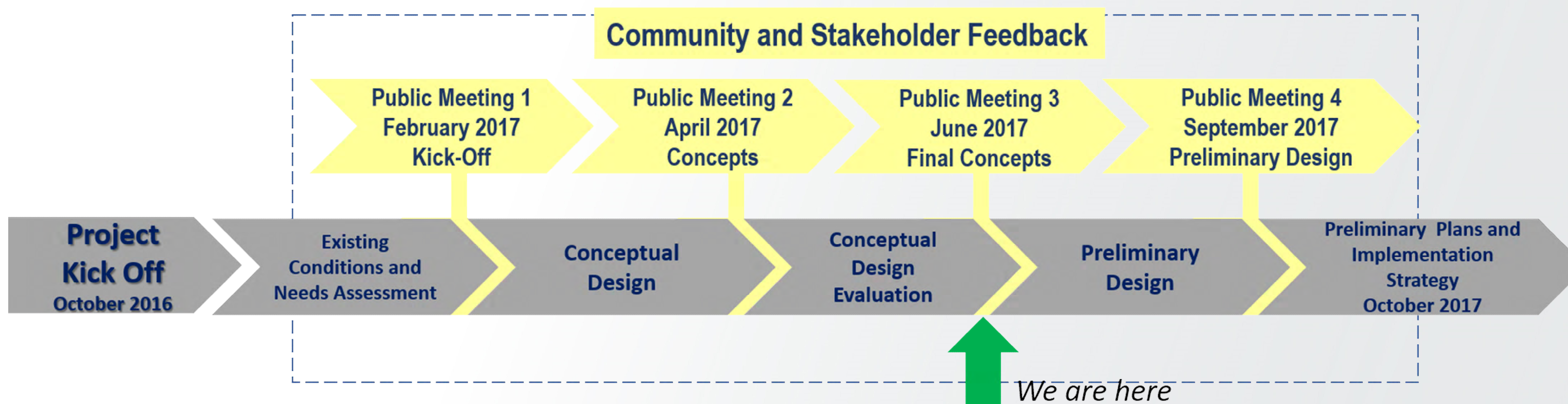
Welcome

- ◆ New York Avenue Streetscape and Trail Project
- ◆ Public Meeting #3
 - June 29, 2017
6:00 PM to 8:00 PM, Brief Presentation at 6:30 PM
 - REI Co-Op, 201 M Street NE, Washington, DC 20002





Project Schedule



Project Goals

This project will identify improvements to:

- Improve pedestrian and cyclist connections and safety along New York Avenue
- Develop a design to improve the off-street transportation system that will include:
 - ✓ Green Infrastructure
 - ✓ Sidewalk
 - ✓ Trail Design & Bicycle Facilities
 - ✓ Street Furniture, Trees, Lighting
 - ✓ Crosswalks
- Create an implementable Preliminary Design and Cost Estimates



Public Meetings #1 and #2

- ◆ Public Meeting #1
 - February 23, 2017
 - Gallaudet University, Washington, DC





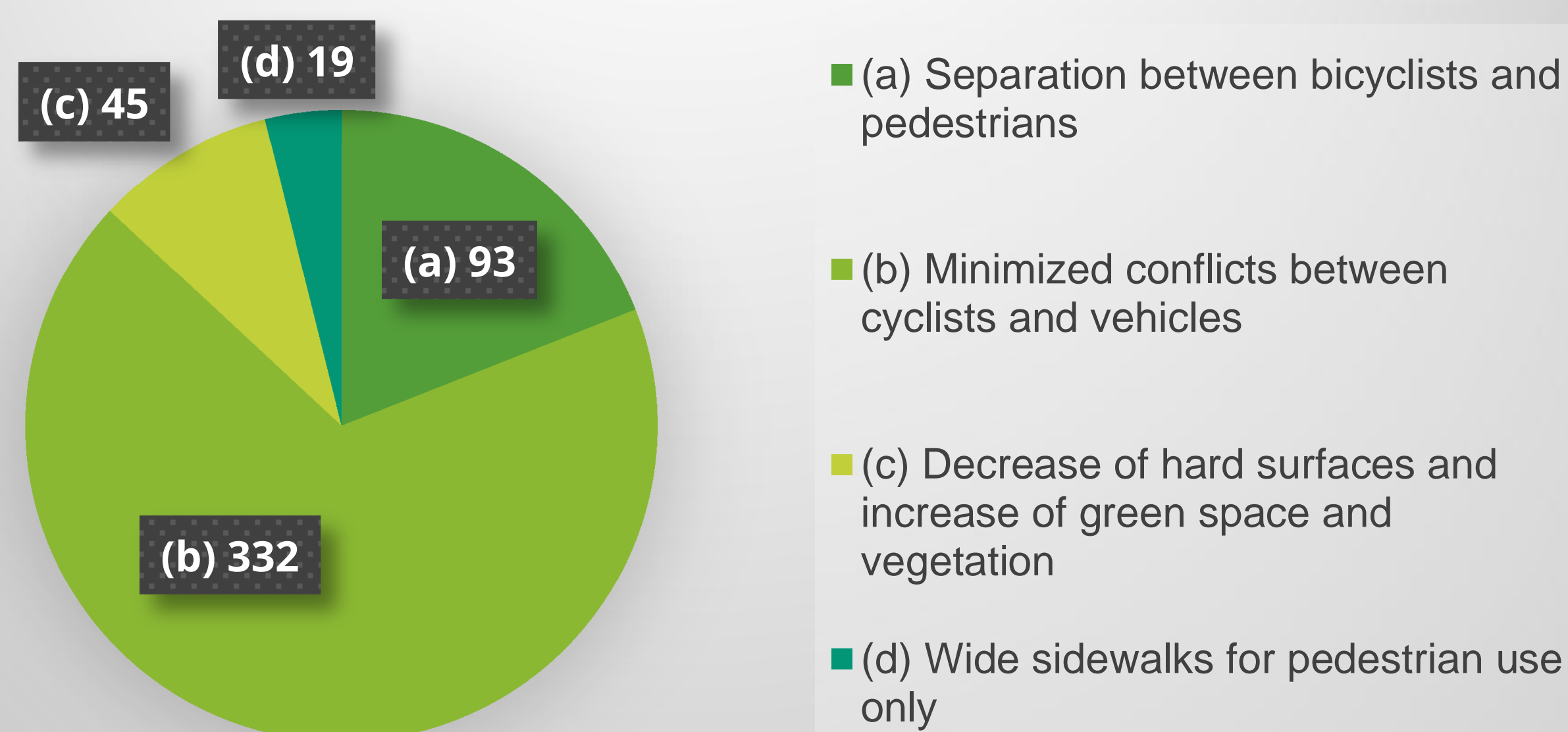
Public Meetings #1 and #2

- ◆ Public Meeting #2
 - April 25, 2017
 - Holiday Inn Express and Suites The Arboretum Room
- ◆ Public Engagement Event: Site Visit
 - May 20, 2017
 - Along New York Avenue NE at Bladensburg Rd, Montana Ave, & Mount Olivet/9th St

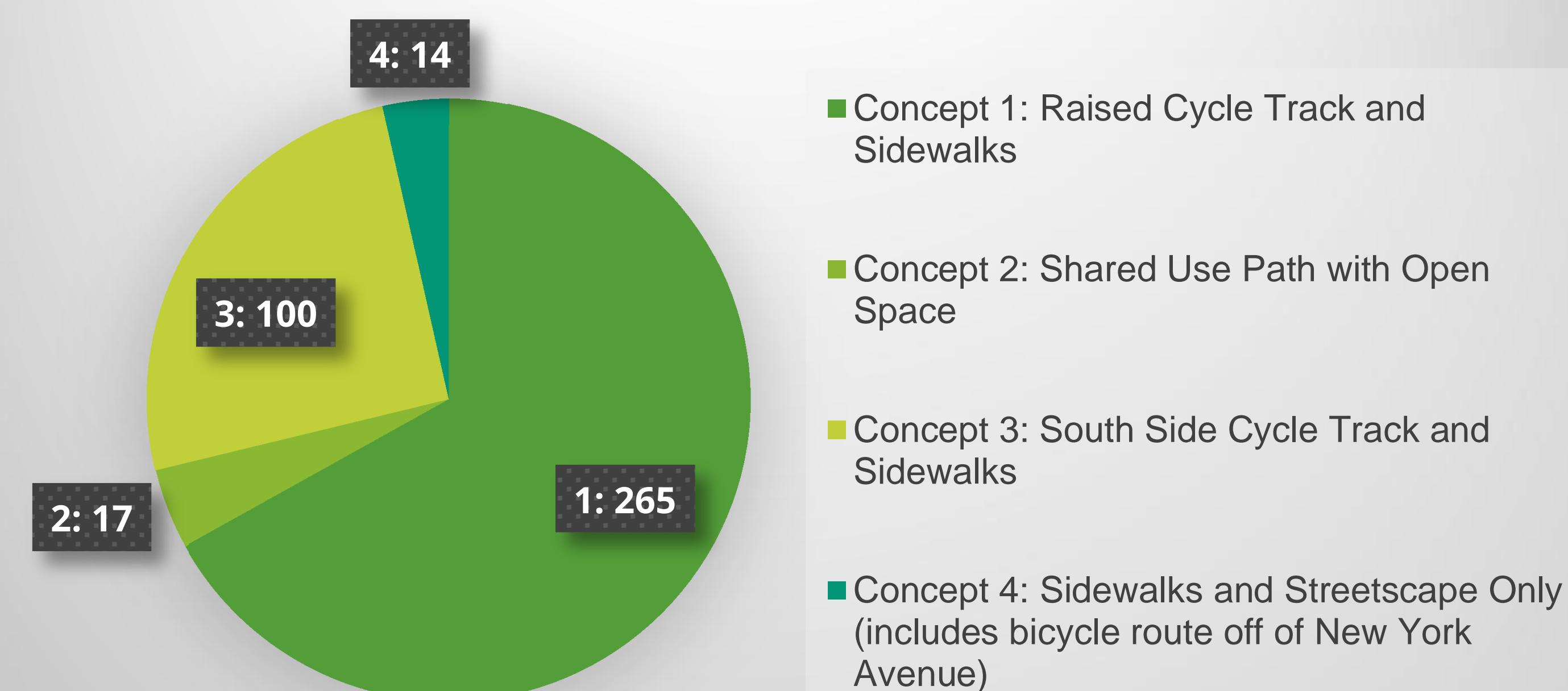


Public Meeting #2 Themes

Q1. How important are the following to you? Please rank in order of importance (1=Most important, 4=Least important)

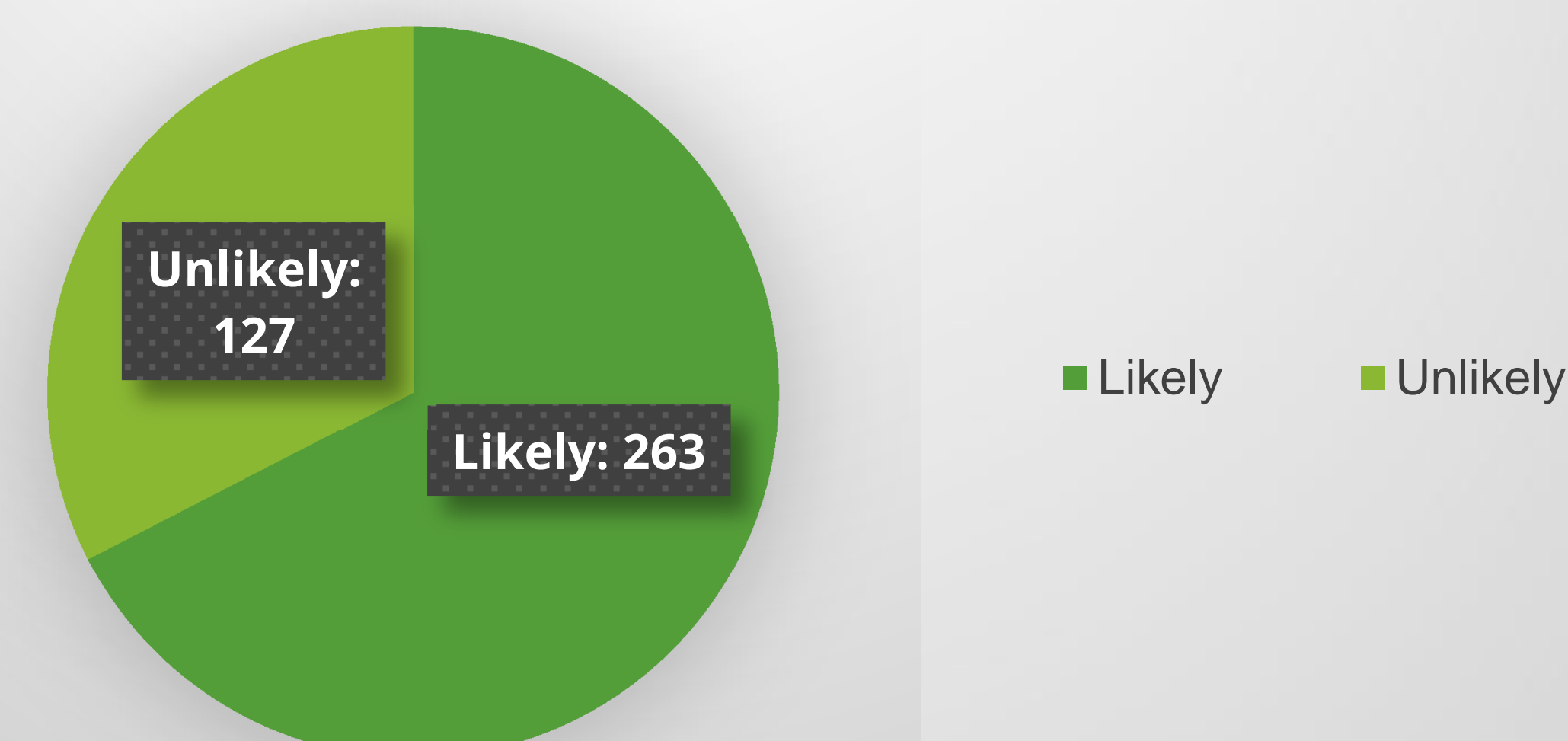


Q2. Rank the concepts shown in order of preference (1=Top Choice, 4=Least Favorite)



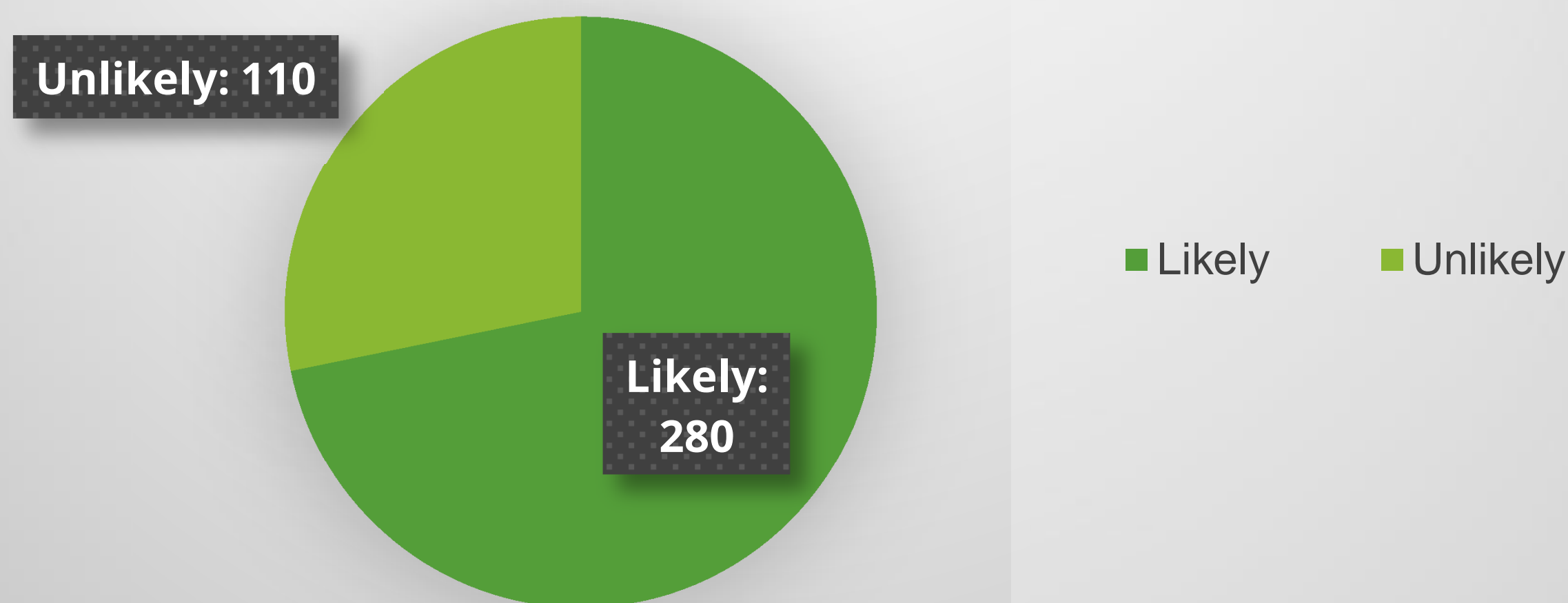
- Received 393 completed surveys
- Key Themes:
 - Clear preference for Concept 1: Raised Cycle Track and Sidewalks
 - Convincing support to minimize conflicts between bicyclists and vehicles
 - Strong inclination to provide separation between bicyclists and pedestrians, even if it means having to cross New York Avenue at-grade to reach the bicycle facility

Q4: How likely are you to walk or bike on sidewalk or trail on the north side of New York Avenue NE if you are required to cross New York Avenue at-grade?

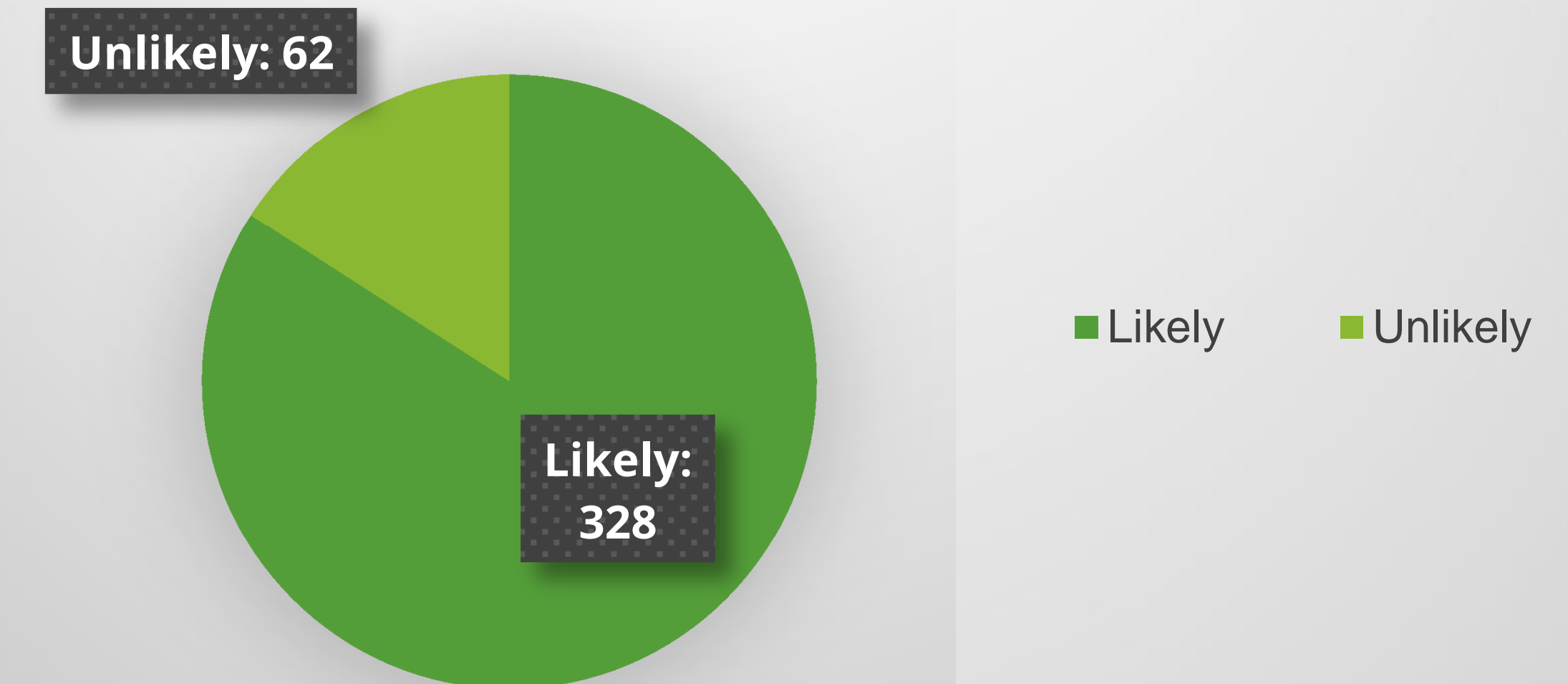


Public Meeting #2 Themes

Q3: How likely are you to follow signage that encourages you to walk on the south side and bicycle on the north side of the New York Avenue Bridge near the Metropolitan Branch Trail?



Q5: How likely are you to use a multi-use trail that crosses over New York Avenue NE via the unused Railroad Bridge and continues along the train tracks behind the businesses to Bladensburg Road?

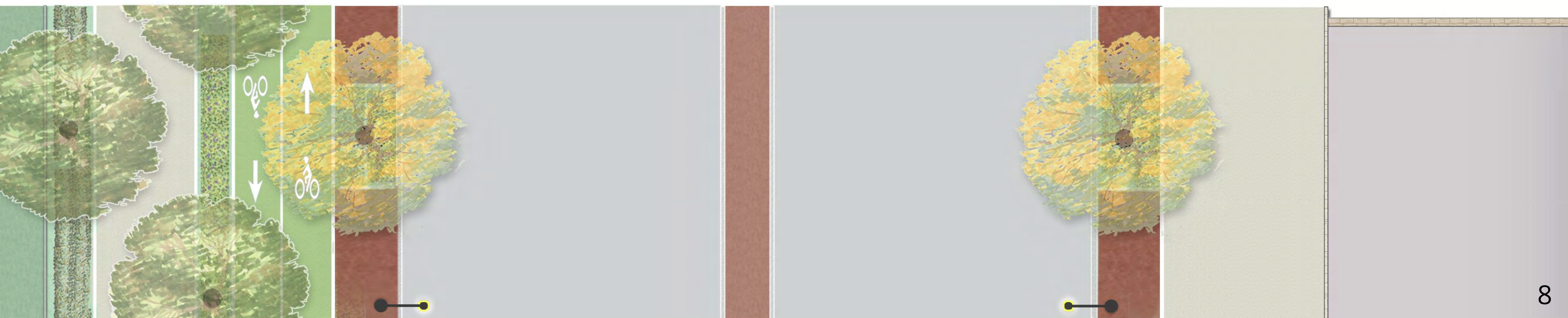
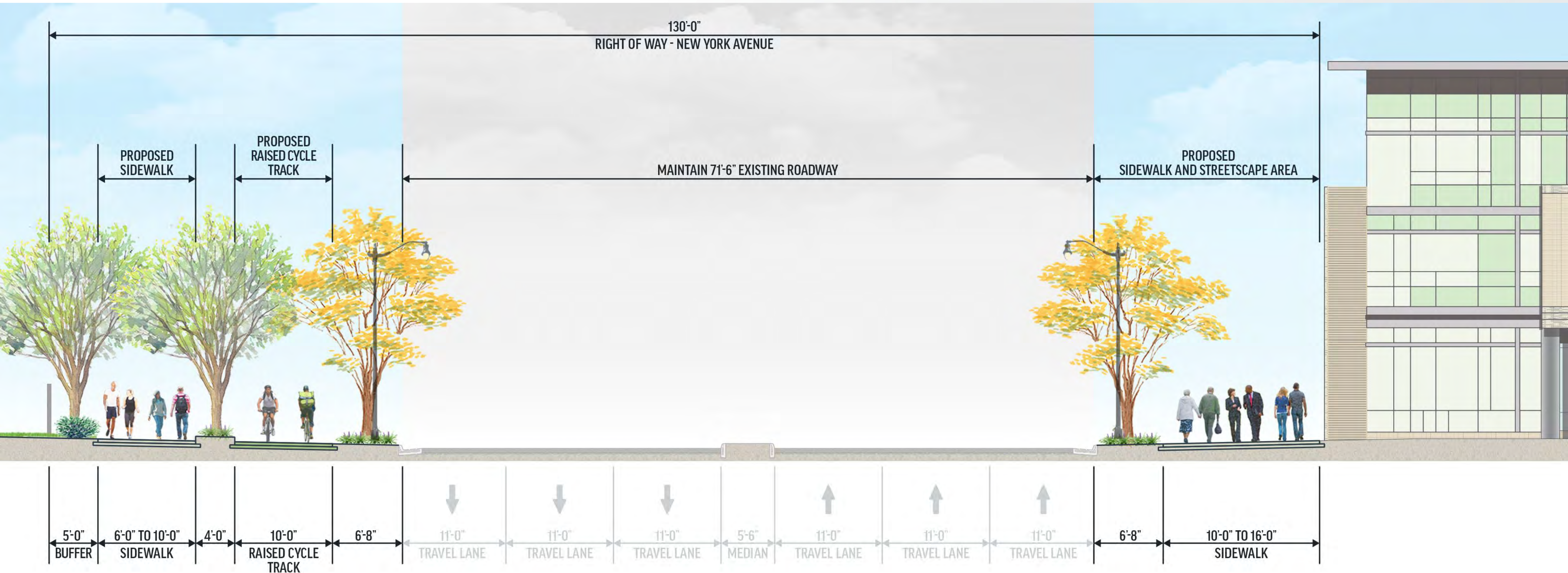


- ◆ Other comments collected include:
 - Safety for all users should be the #1 priority
 - Support for connections to other trails, neighborhoods, and destinations
 - Green spaces, trees, and public art are appreciated, but are secondary concerns behind safety

Selected Design: Concept 1

4th Street NE to 16th Street NE Design Options

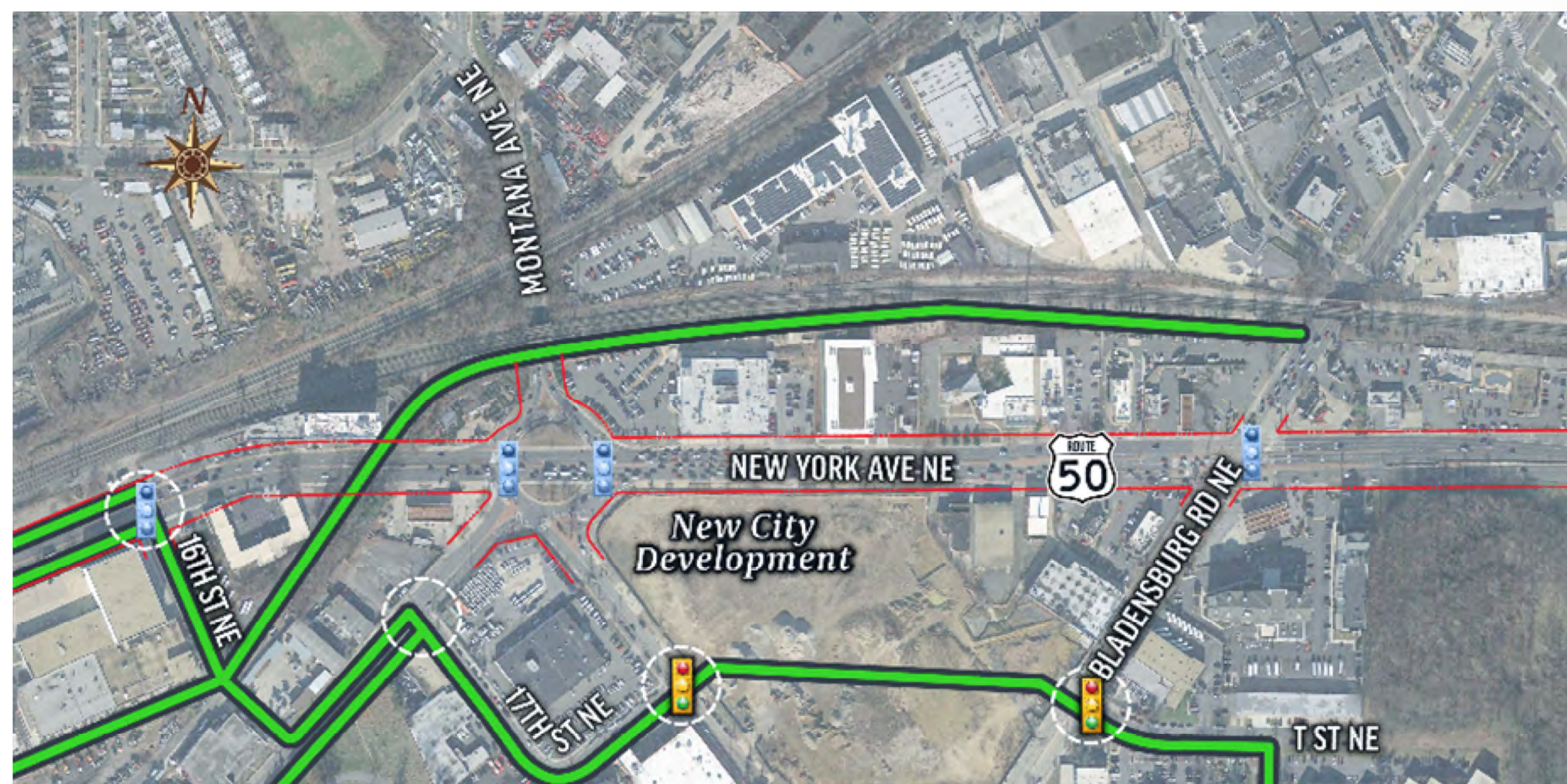
Concept 1 – North Side Raised Cycle Track and Separated Sidewalk





What Has Changed

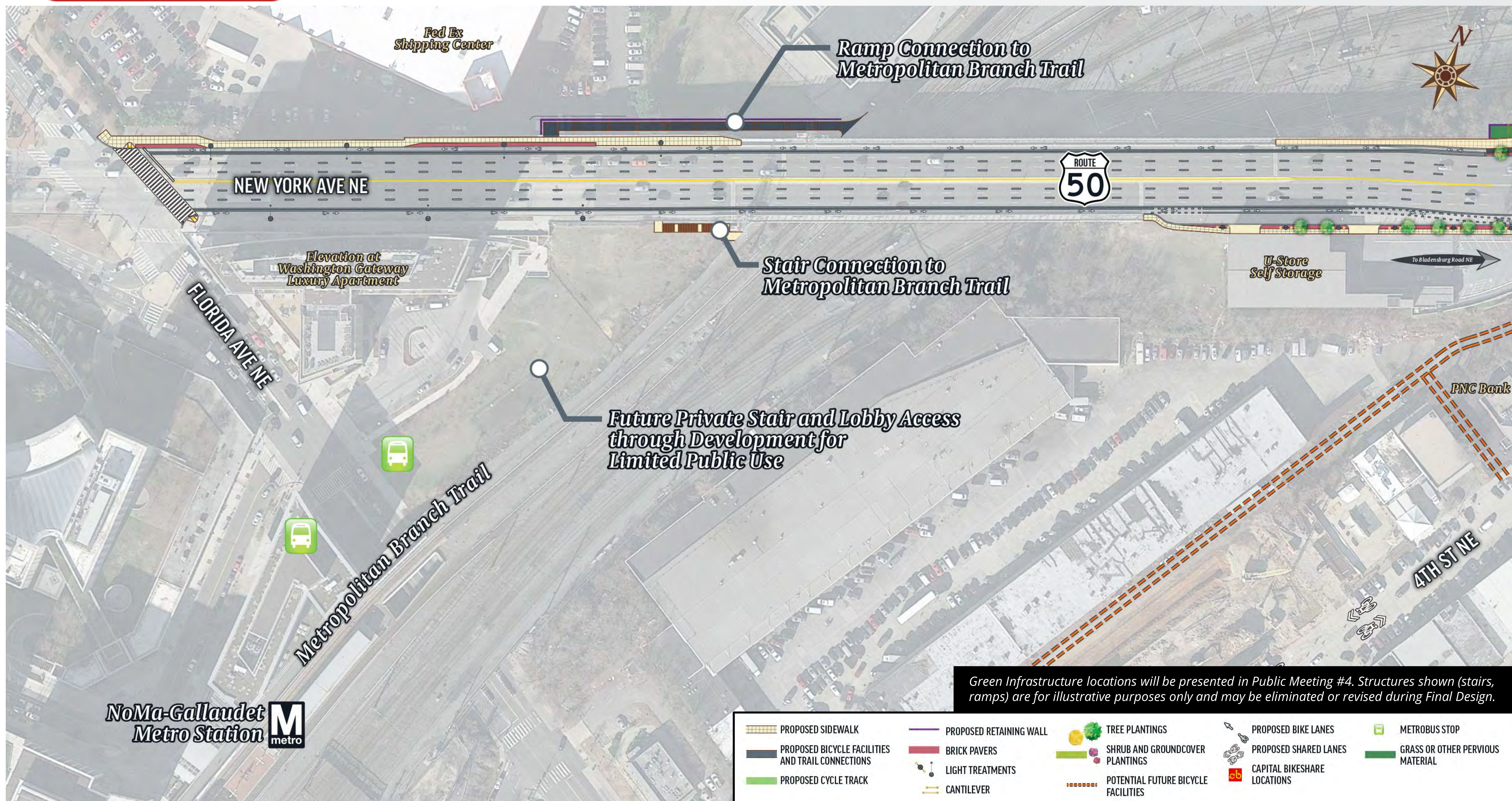
Removed from Design	Where We Are	What we are Working Toward
Use of existing Railroad Tunnel underneath New York Avenue	New Separate Bicycle and Pedestrian Facilities along North Side of New York Avenue	Preparing Preliminary Engineering Design Plans
Use of existing, unused Railroad Bridge over New York Avenue	Buffered/Protected Bike Lanes across New York Avenue Bridge	Preliminary Cost Estimate, and Design Implementation Strategy
Trail Option along South Side of Railroad Tracks	Full, Consistent Streetscape Design of New York Avenue (Lights, Landscaping, Brick Banding)	Green Infrastructure Locations
Concept 2: North Side Shared Use Path with Open Space	Filling in all gaps in Existing Sidewalks along New York Avenue	Environmental Documentation
Concept 3: South Side Cycle Track and Sidewalks		





New York Avenue NE Segment 1

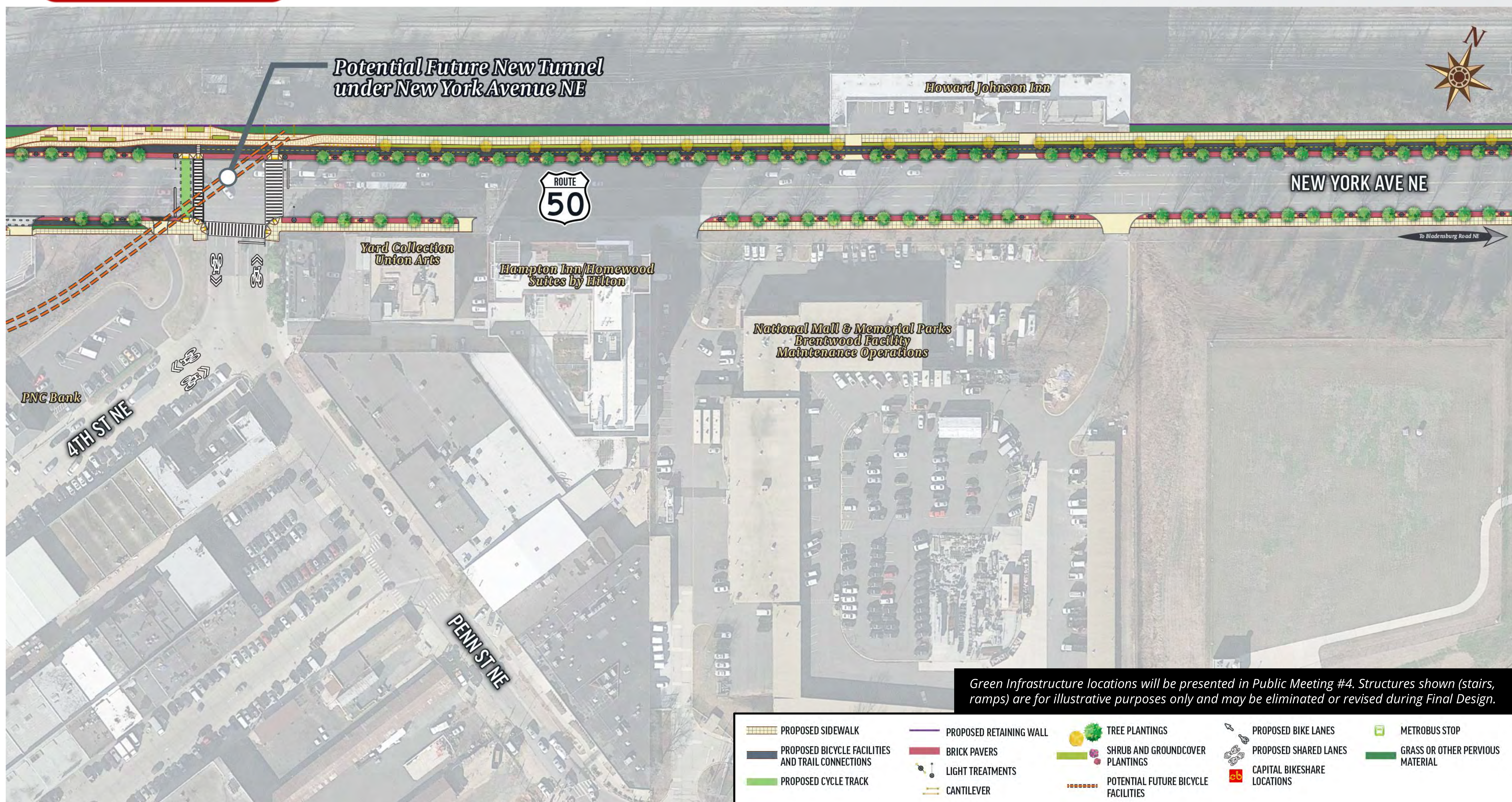
Florida Avenue NE to 4th Street NE



- New York Avenue Bridge – New Concept to continue bicycle facilities to Florida Avenue (Virtual Circle project)

New York Avenue NE Segment 1

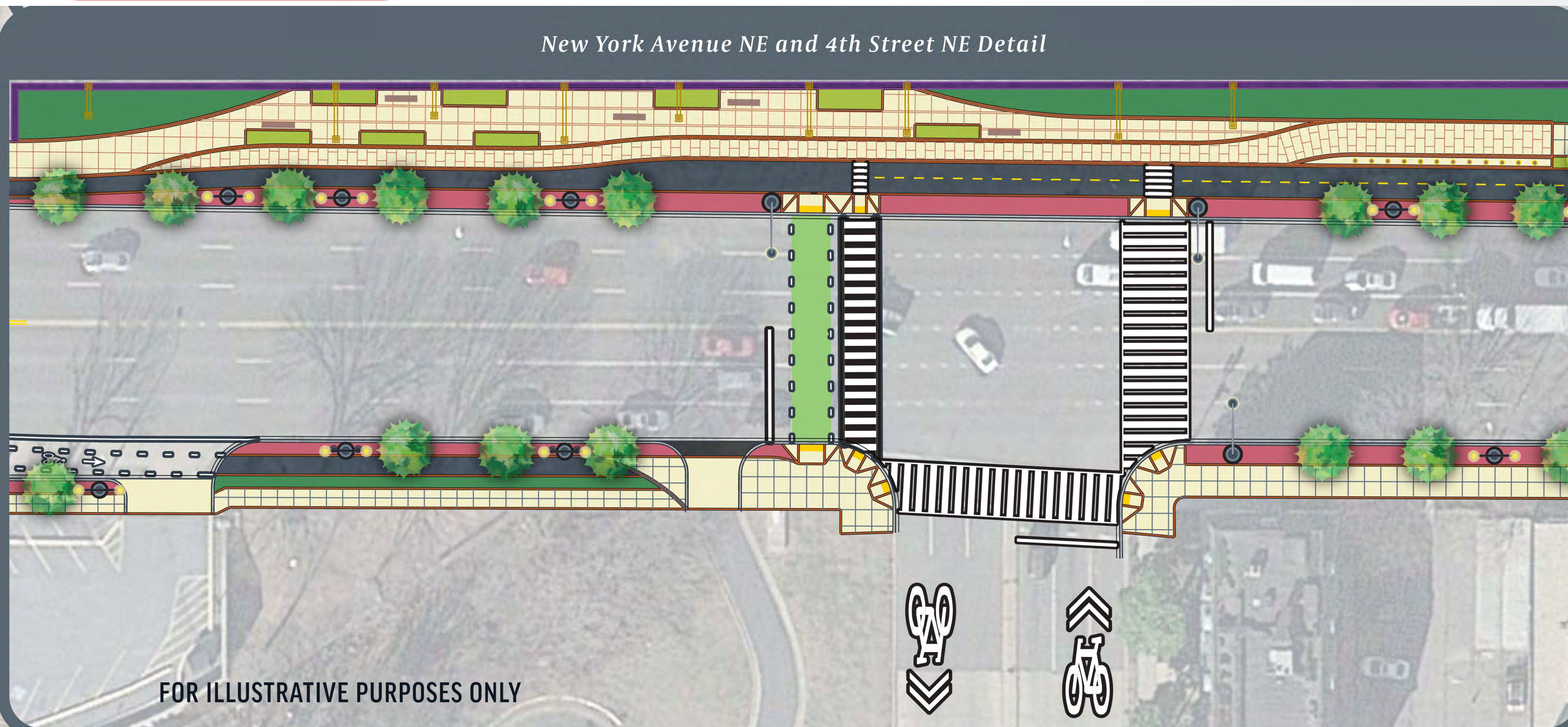
4th Street NE to 9th Street NE Bridge



- Potential space along north side for different opportunities, such as a train overlook esplanade

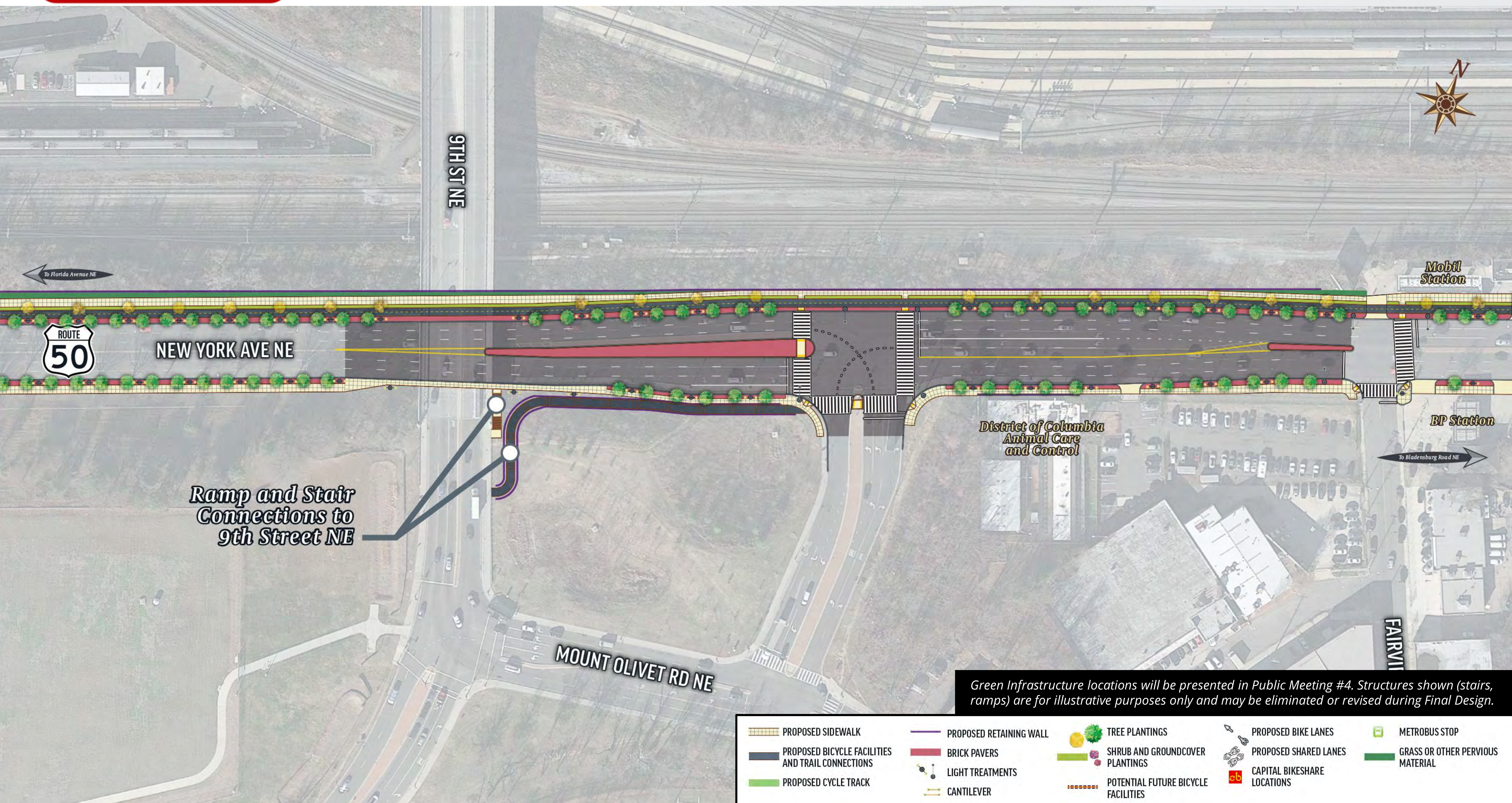
Potential Train Overlook Esplanade near 4th Street

New York Avenue NE and 4th Street NE Detail



New York Avenue NE Segment 2

9th Street NE Bridge to Fairview Avenue NE

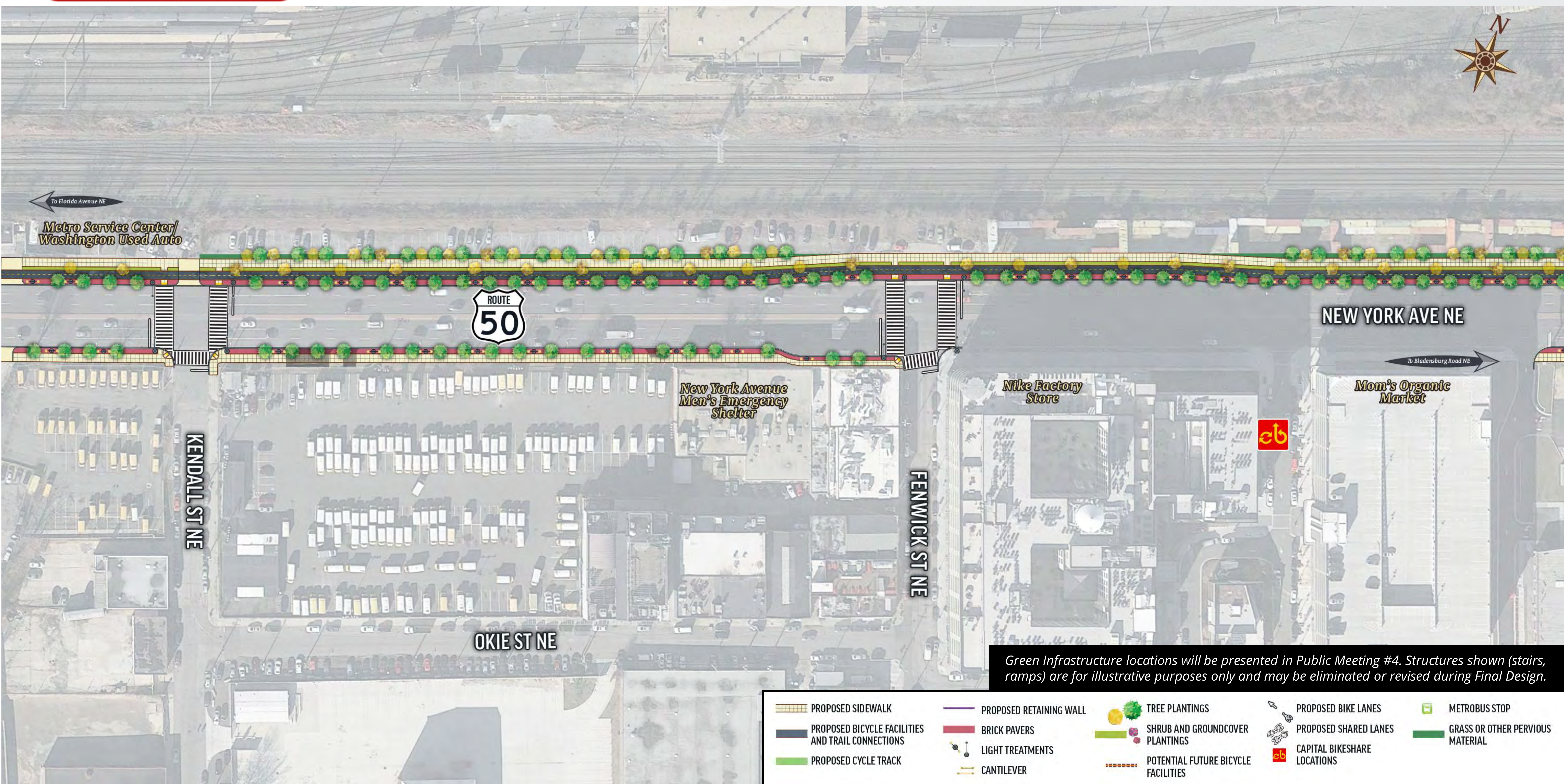


- Roadway section is shifted south at intersection to accommodate separate facilities on the north side



New York Avenue NE Segment 2

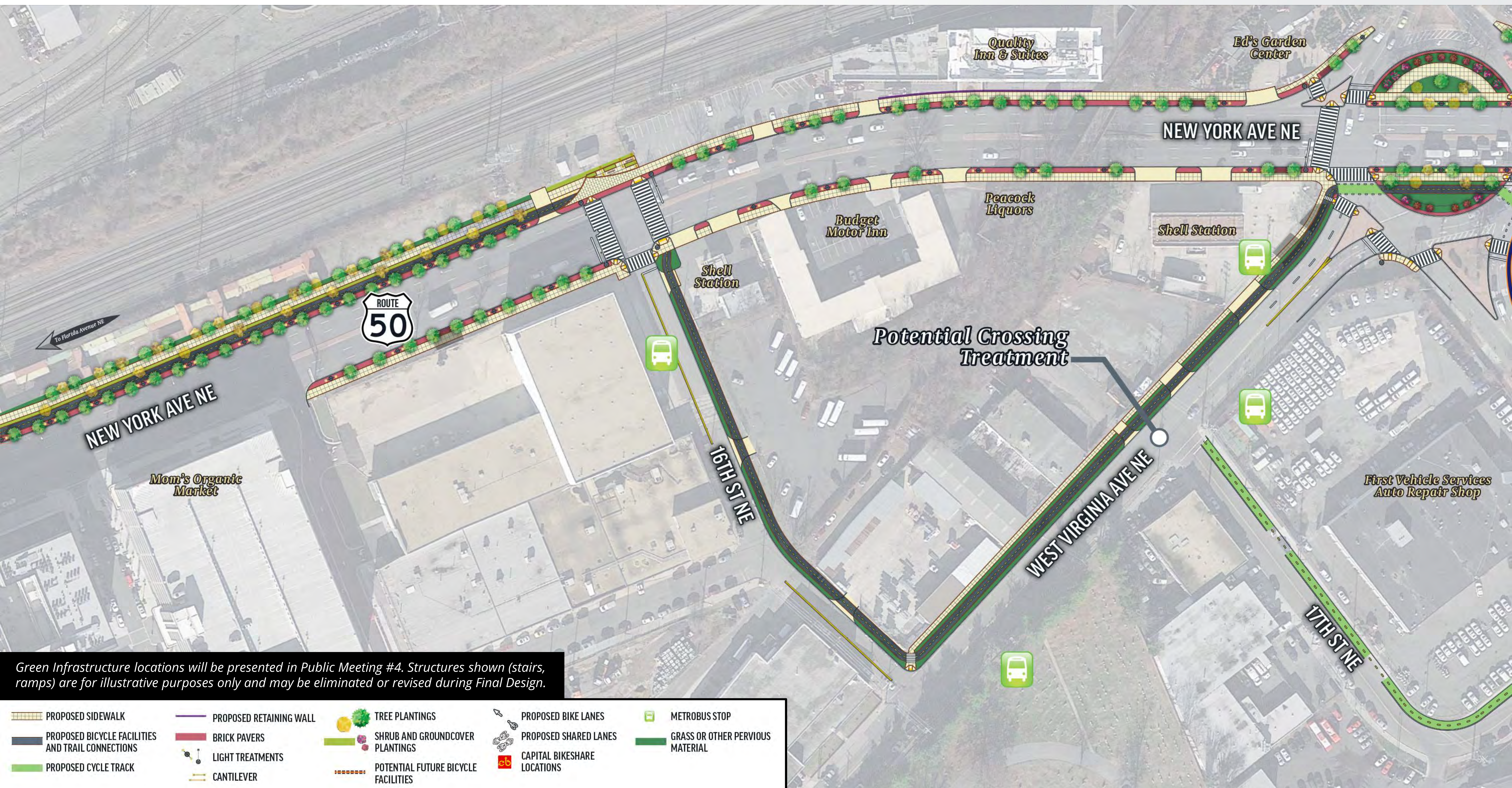
Fairview Avenue NE to Hecht Warehouse Area



- Project design utilizes full width of DDOT right-of-way on north side to accommodate full design

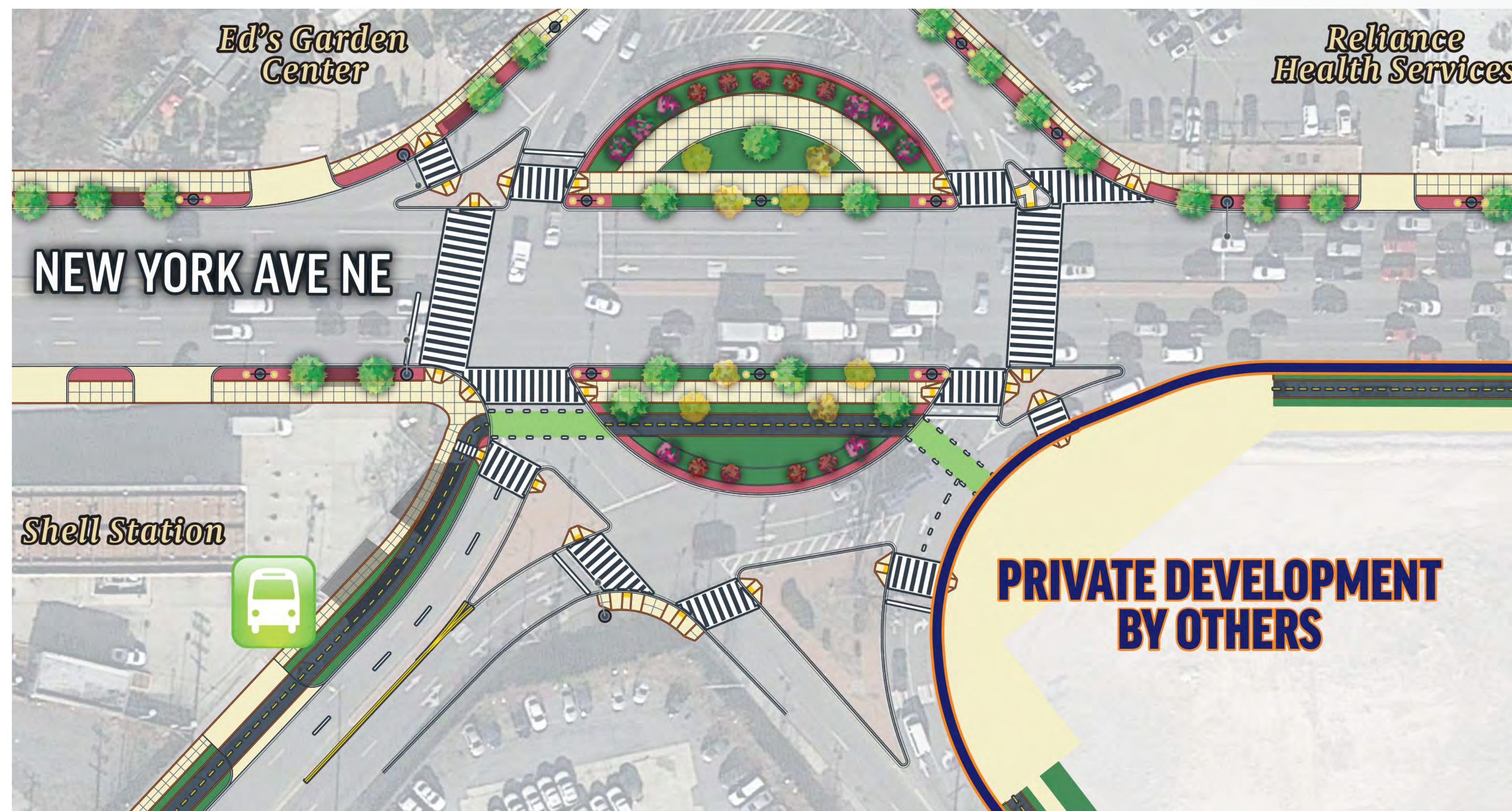
New York Avenue NE Segment 3

Hecht Warehouse Area to Montana Avenue NE



- Project proposes consolidating access locations along New York Avenue
- Improvements to sidewalk between 16th St and Montana Circle

Montana Avenue Circle

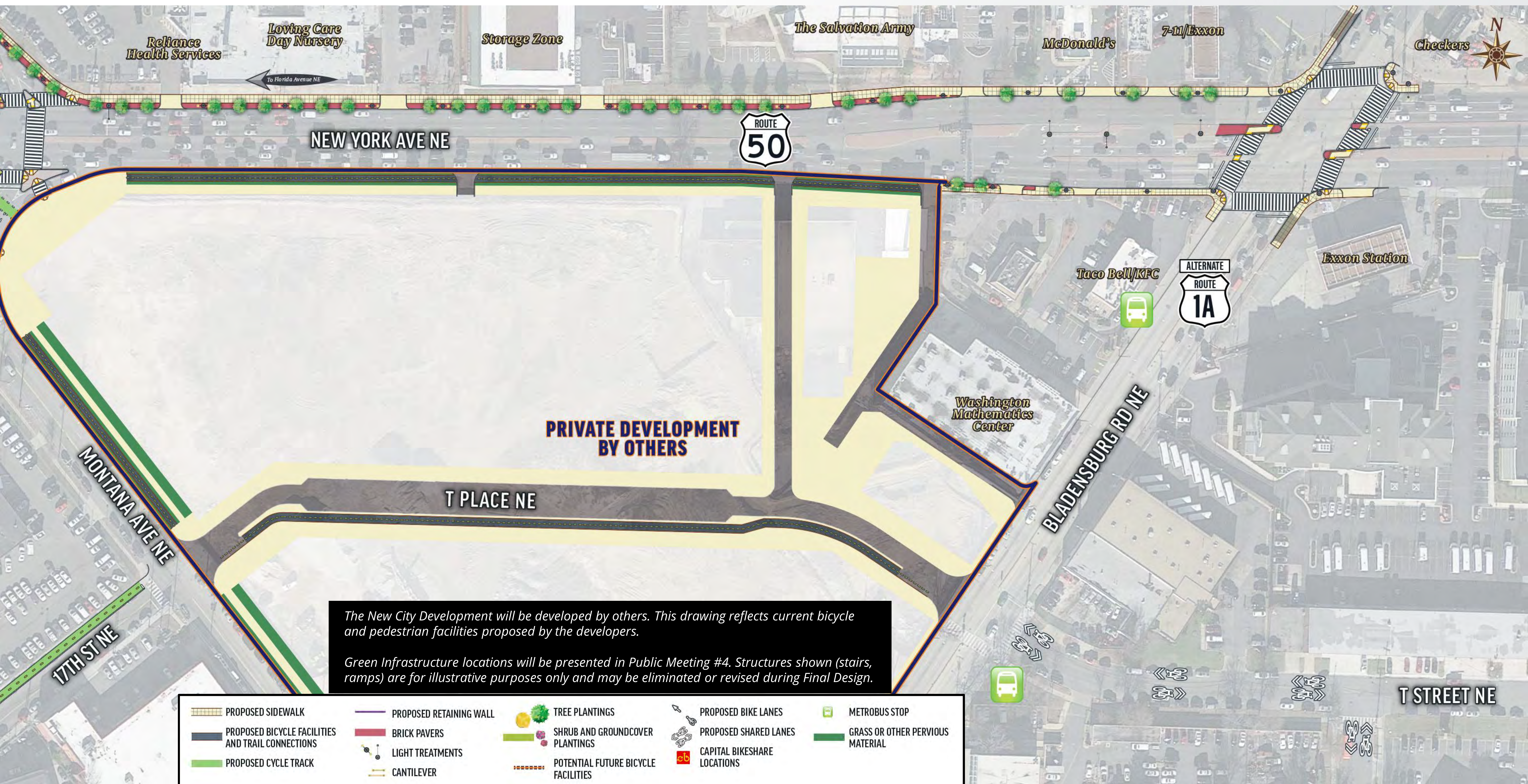


Points of Discussion

- Green Infrastructure Opportunities still being evaluated
- Potential Bicycle Route through Circle
- Maintain Visibility of Pedestrians and Bicyclists and Design Appropriate Adjustments of Refuge Islands

New York Avenue NE Segment 3

Montana Avenue NE to Bladensburg Road NE



- Full streetscape concept design is accommodated along north side

Off of New York Avenue Bicycle Route

Eastern Segment: Connect to National Arboretum





Stay Connected

◆ DDOT Project Contact

- Katherine Youngbluth, AICP
Project Manager
katherine.youngbluth@dc.gov
- Michael Alvino, AICP
Project Manager
michael.alvino@dc.gov

**SEE YOU IN
SEPTEMBER FOR
OUR FINAL
PUBLIC MEETING!**

◆ Website

- www.NewYorkAvenueProject.com

◆ Social Media

- Facebook – District Department of Transportation
 - <https://www.facebook.com/DDOTDTC/>
- Twitter - @DDOTDTC



Off of New York Avenue Bicycle Route

Western Segment: Connect to NoMa-Gallaudet Metro Station

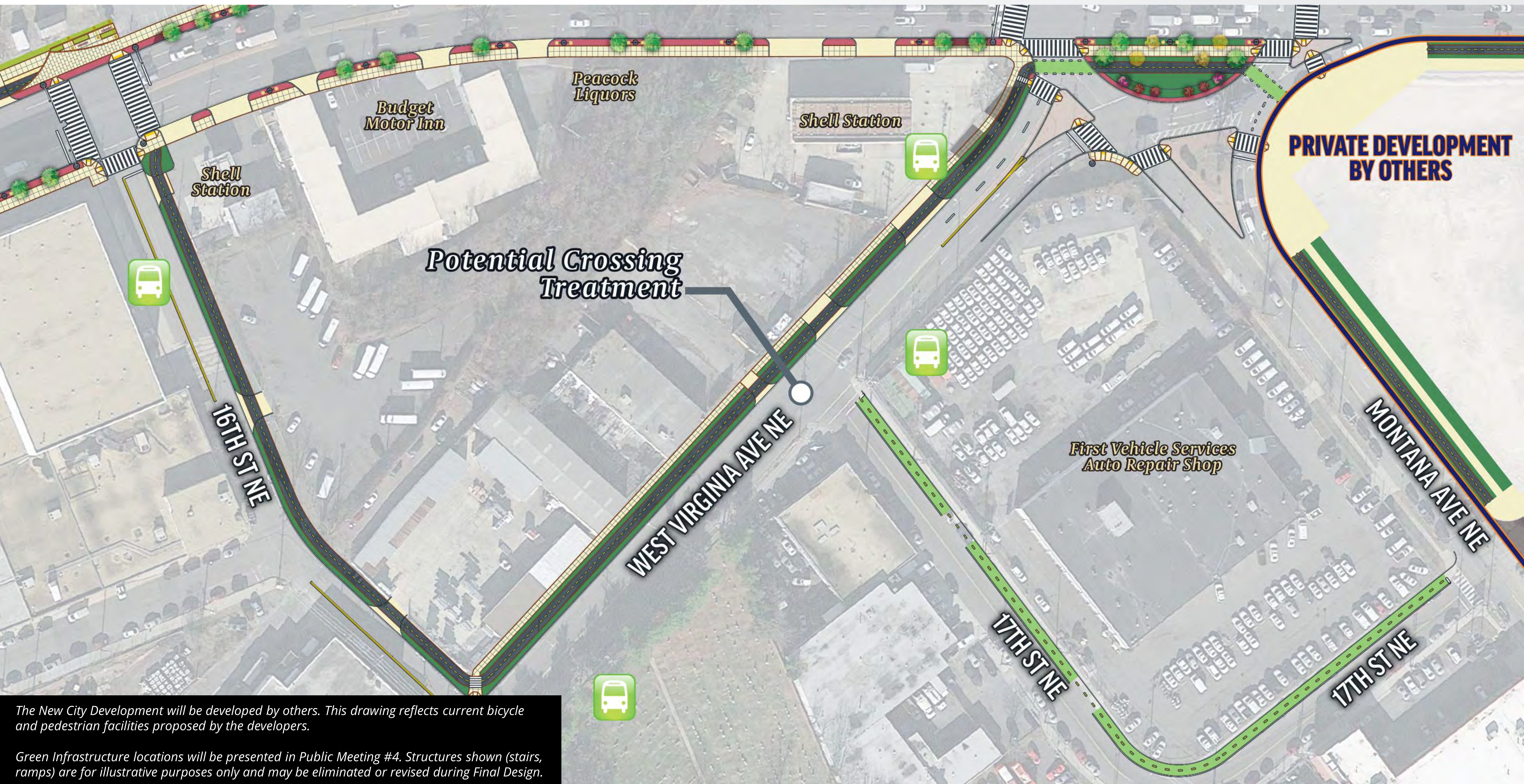


Green Infrastructure locations will be presented in Public Meeting #4. Structures shown (stairs, ramps) are for illustrative purposes only and may be eliminated or revised during Final Design.

- | | | | | |
|---|-------------------------|-------------------------------------|-----------------------------|----------------------------------|
| PROPOSED SIDEWALK | PROPOSED RETAINING WALL | TREE PLANTINGS | PROPOSED BIKE LANES | METROBUS STOP |
| PROPOSED BICYCLE FACILITIES AND TRAIL CONNECTIONS | BRICK PAVERS | SHRUB AND GROUNDCOVER PLANTINGS | PROPOSED SHARED LANES | GRASS OR OTHER PERVIOUS MATERIAL |
| PROPOSED CYCLE TRACK | LIGHT TREATMENTS | POTENTIAL FUTURE BICYCLE FACILITIES | CAPITAL BIKESHARE LOCATIONS | |
| | CANTILEVER | | | |

Off of New York Avenue Bicycle Route

Eastern Segment: Connect to National Arboretum



The New City Development will be developed by others. This drawing reflects current bicycle and pedestrian facilities proposed by the developers.

Green Infrastructure locations will be presented in Public Meeting #4. Structures shown (stairs, ramps) are for illustrative purposes only and may be eliminated or revised during Final Design.

PROPOSED SIDEWALK	PROPOSED RETAINING WALL	TREE PLANTINGS	PROPOSED BIKE LANES	METROBUS STOP
PROPOSED BICYCLE FACILITIES AND TRAIL CONNECTIONS	BRICK PAVERS	SHRUB AND GROUNDCOVER PLANTINGS	PROPOSED SHARED LANES	GRASS OR OTHER PERVIOUS MATERIAL
PROPOSED CYCLE TRACK	LIGHT TREATMENTS	POTENTIAL FUTURE BICYCLE FACILITIES	CAPITAL BIKESHARE LOCATIONS	
	CANTILEVER			