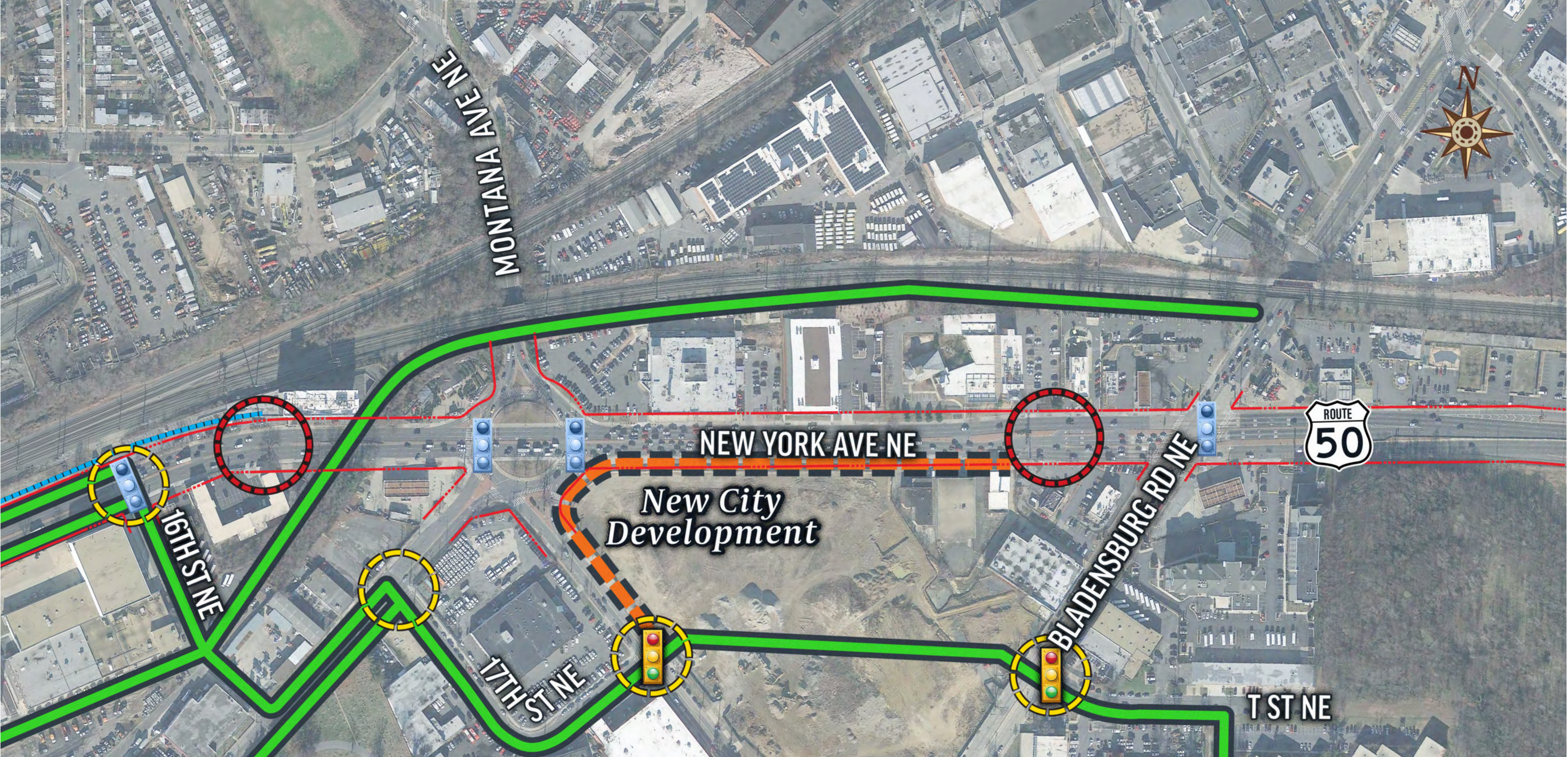


New York Avenue NE Segment 3

16th Street NE to Bladensburg Road NE Design Options

16TH STREET NE TO BLADENSBURG ROAD NE



For Potential Bicycle Route Options not along New York Avenue see Off of New York Avenue Bicycle Route board at Station 4. These Pinch Points represent a few major locations along the corridor where the available space is limited. There are other additional pinch points along the corridor.

LEGEND: — Potential Bicycle Route Options - - - Future Bike Trail and Sidewalk — New Sidewalk Connections - - - New York Avenue Right of Way   Trail Crossing ● Existing Traffic Signal   Pinch Point

SEGMENT DESIGN OPPORTUNITIES AND CHALLENGES

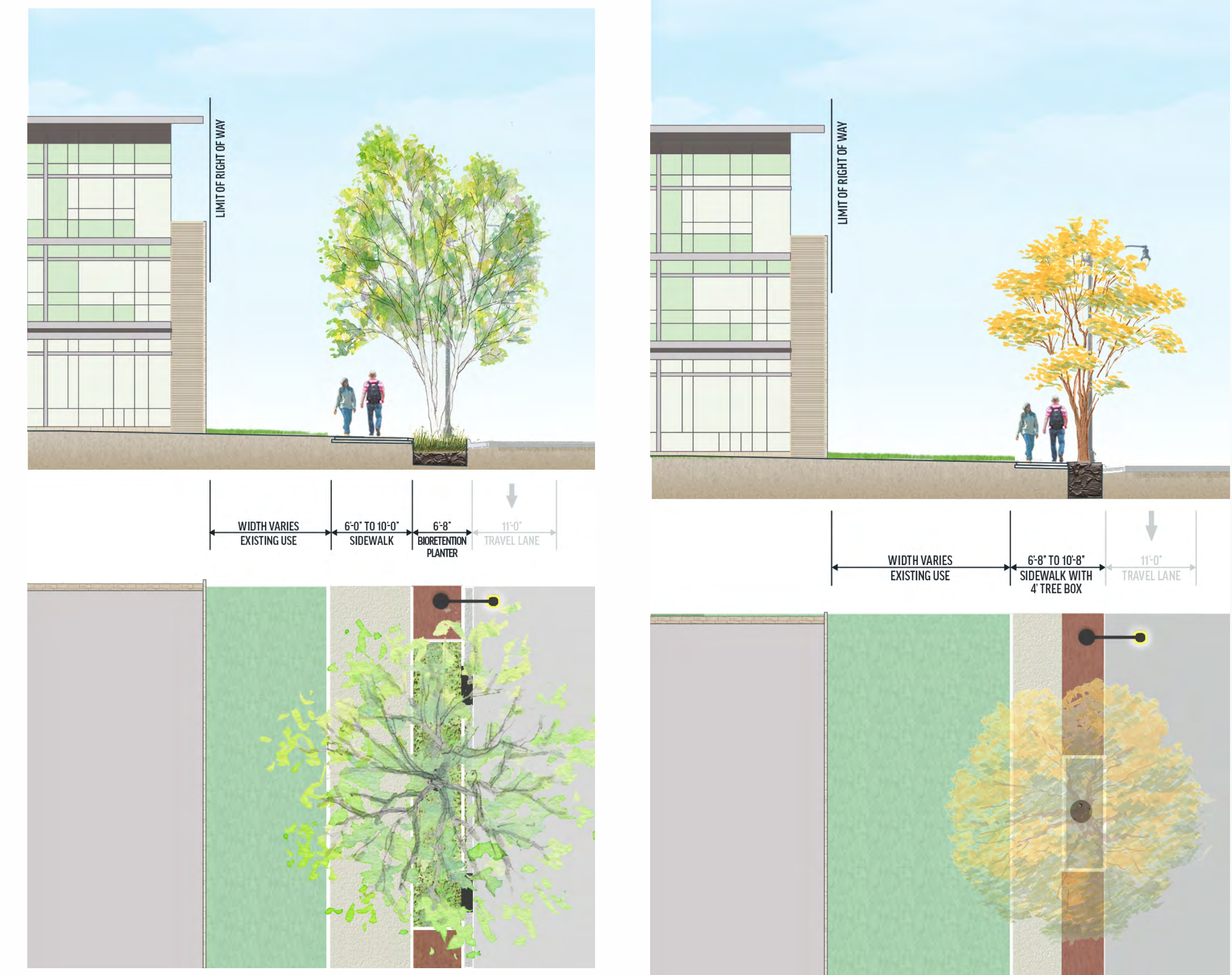
OPPORTUNITIES

- ♦ UNUSED RAILROAD BRIDGE PROVIDES POTENTIAL ELEVATED CROSSING OF NEW YORK AVENUE
- ♦ CONNECTION TO FUTURE NEW CITY PEDESTRIAN AND BICYCLE FACILITIES
- ♦ OPPORTUNITIES TO INCREASE GREEN INFRASTRUCTURE AND TREE CANOPY COVERAGE
- ♦ OPPORTUNITIES TO CLOSE AND DECREASE WIDTHS OF WIDE DRIVEWAY APRONS
- ♦ PROVIDE INCREASED SIDEWALK LIGHTING, STREET TREES, AND STREET FURNITURE

CHALLENGES

- ♦ PRIVATE RAILROAD BRIDGE OWNERSHIP
- ♦ COST OF RAILROAD BRIDGE REHABILITATION/POTENTIAL NEW BRIDGE OVER MONTANA AVENUE
- ♦ RIGHT OF WAY CHALLENGES AT BLADENSBURG ROAD INTERSECTION
- ♦ EXISTING PRIVATE PERMITTED AND UNPERMITTED SIGNAGE, RETAINING WALLS, FENCING, ETC. WITHIN THE PUBLIC RIGHT-OF-WAY

SEGMENT 3 STREETSCAPE



OPTION A GREEN INFRASTRUCTURE    OPTION B STANDARD TREE BOX  
Typicals shown for north side. South side similar and by others (New City Development).

BLADENSBURG ROAD NE INTERSECTION



NOTE: All recommended upgrades to intersection as part of Vision Zero report will be implemented by end of 2017. Ask staff for more information on Vision Zero report recommended upgrades.

INTERSECTION DESIGN GOALS

- ♦ Improve pedestrian and bicycle connectivity
- ♦ Improve overall safety and user experience with larger refuge islands and refurbished curb ramps
- ♦ Increase tree canopy and decrease impervious surface
- ♦ Close and/or narrow width of wide driveway aprons