

E

DETOUR PLANS

Due to the narrow roadway and limited right-of-way, the rehabilitation of Broad Branch Road will require that one travel lane be closed and at times the roadway will be closed to all but local and emergency vehicles. To minimize impacts during these periods DDOT has recommended that the reconstruction occur in four phases, as presented in **Table E-1**. Potential detour plans are outlined below for illustrative purposes; actual maintenance of traffic (MOT) and detour plans will be developed during final design.

Table E-1. Construction Phasing / Maintenance of Traffic

LOCATION		ANTICIPATED DETOUR ROUTE	CONSTRUCTION DURATION
1	Linnean Avenue to 27th Street	Linnean Avenue	6-9 months
2	27th Street to Grant Road	Linnean Avenue	6-9 months
3	Grant Road to Brandywine Street	Linnean Avenue	6-9 months
4	Brandywine Street to Beach Drive	Connecticut Avenue/Beach Drive	6-9 months

Location 1 - Traffic to and from the south destined for the section of Broad Branch Road north of 27th Street could detour via Davenport Street to Linnean Avenue (**Figure E-1**). Traffic north or west of the intersection with Linnean Avenue could either take Linnean Avenue south to Davenport Street or take Nebraska Avenue to Connecticut Avenue south.

Location 2 - Travel around this section of construction would be very similar to the alternative route for Location 1 (**Figure E-2**). Traffic to and from the south destined to the section of Broad Branch Road north of 27th Street could detour via Davenport Street to Linnean Avenue north (see Figure E-1). Traffic north or west of the intersection with Linnean Avenue, or from 27th Street, could either take Linnean Avenue south to Davenport Street, or take Nebraska Avenue to Connecticut Avenue south.

Location 3 – Rerouted traffic in this location would be relatively short as traffic from either direction need only travel a few blocks to the west down Davenport and Brandywine Streets to Linnean Avenue for a short distance before returning to Broad Branch Road (**Figure E-3**).

Location 4 – Since there are no streets crossing over Soapstone Creek in this vicinity, traffic would be rerouted to Connecticut Street via Brandywine in the north and via West Beach Drive and Tilden Street in the south (**Figure E-4**).

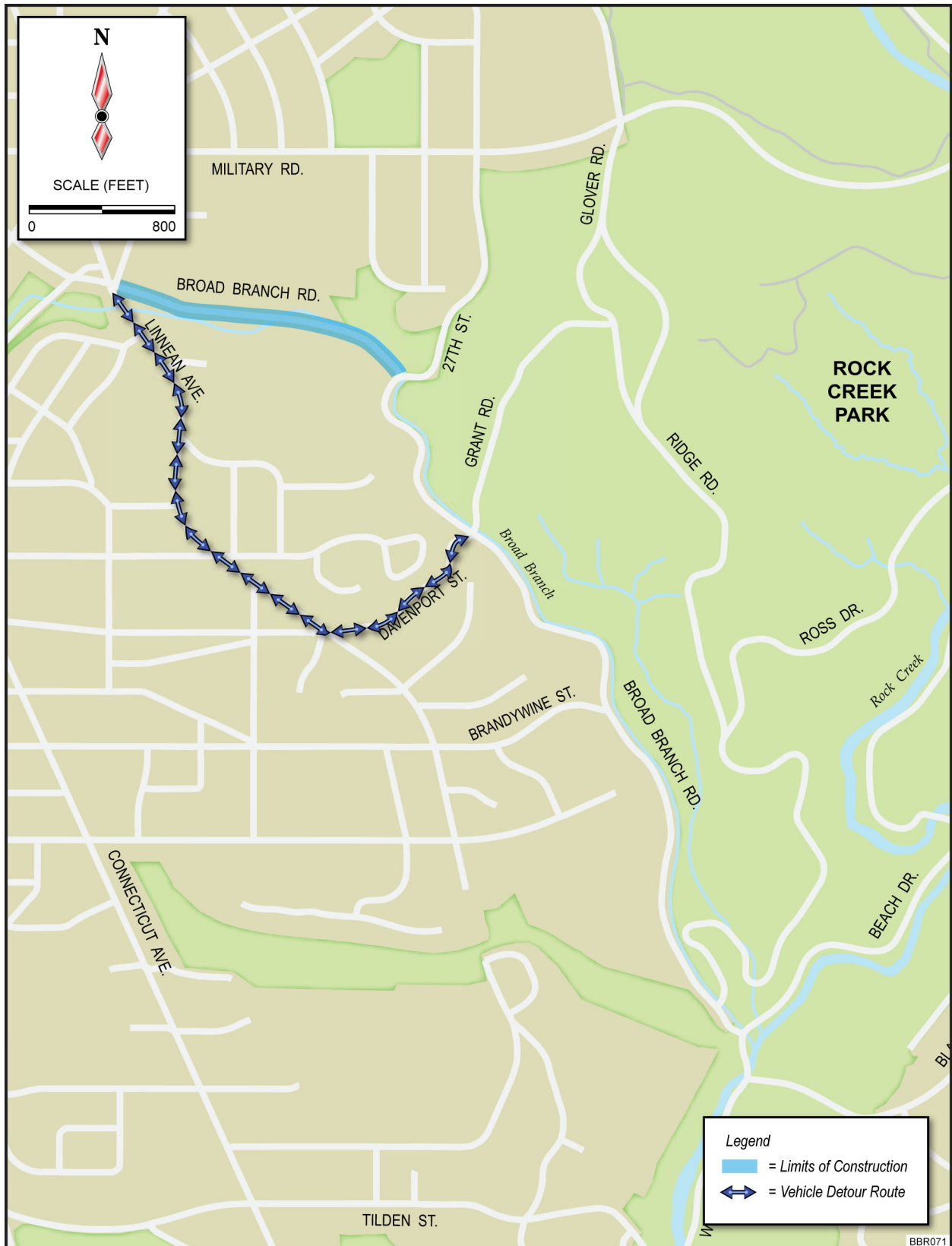


Figure E-1. Potential Detour – Location 1



Figure E-2. Potential Detour – Location 2



Figure E-3. Potential Detour – Location 3



Figure E-4. Potential Detour – Location 4