

Broad Branch Road

Environmental Assessment
and
Section 106 Evaluation

Public Meeting

Welcome!

TONIGHT'S MEETING

- The purpose of this meeting is to provide all interested persons an opportunity to provide input on the project and review & comment on the alternative improvements being considered for Broad Branch Road.
- This evening's meeting is an Open House format, during which you will be able to talk directly with members of DDOT's project team.
- We will be glad to answer any questions you might have, and we thank you for your participation in this process.
- You are encouraged to provide your thoughts and ideas in writing on the comment forms provided or on the project website.



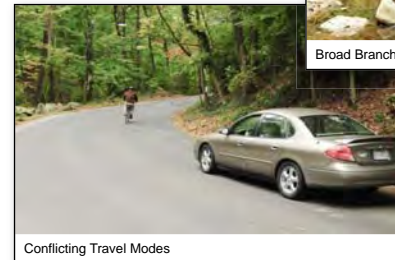
Historic Roadway Feature



Historic Structure



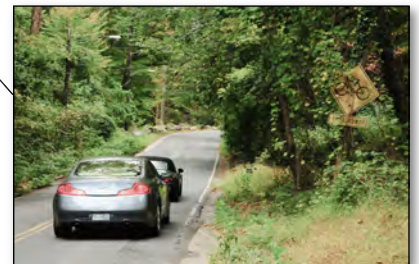
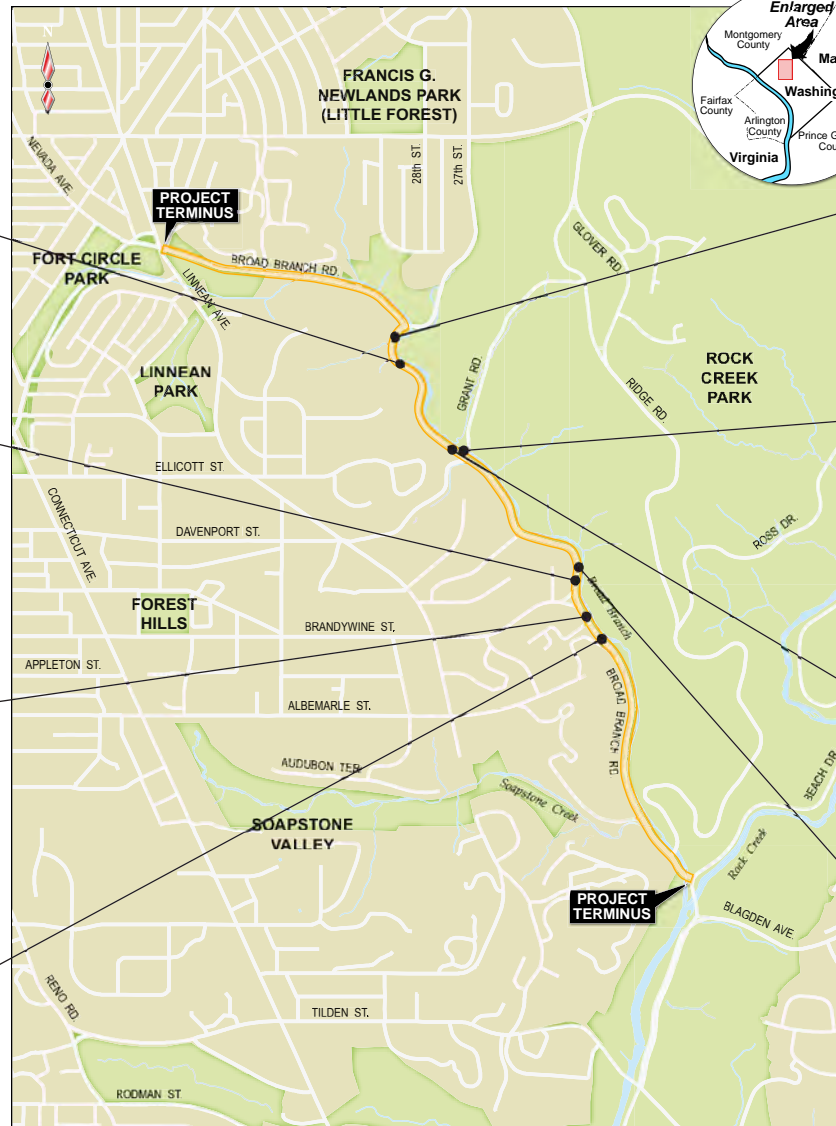
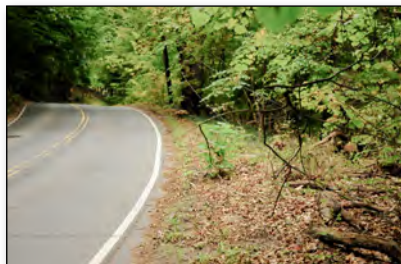
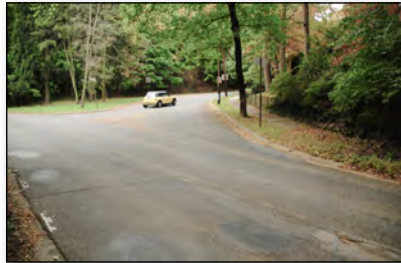
Broad Branch



Conflicting Travel Modes

DDOT is committed to ensuring that no person is excluded from participation in, or denied the benefits of its projects, programs, and services on the basis of race, color, national origin, or gender, as provided by Title VI of the Civil Rights Act of 1964 or on the basis of disability as provided by the Americans with Disabilities Act.

PROJECT LOCATION



PROJECT AREA FEATURES

Natural Resources



Cultural Resources

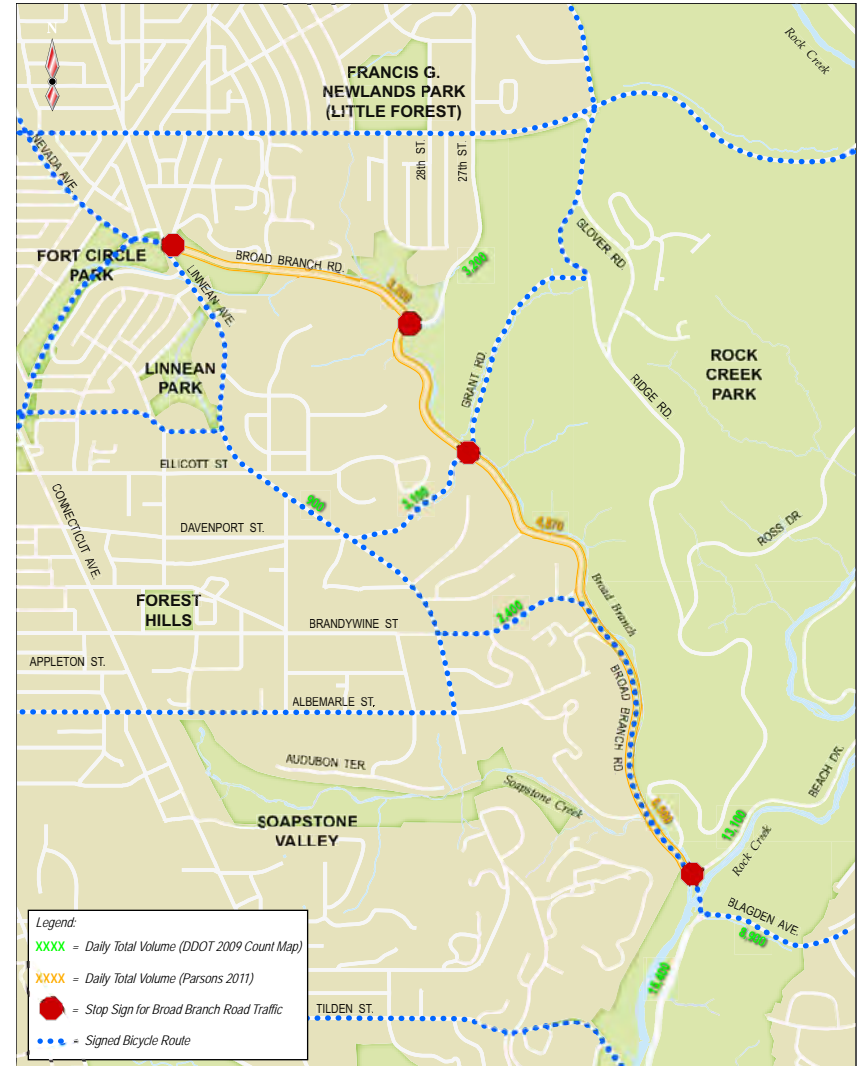


PROJECT AREA FEATURES

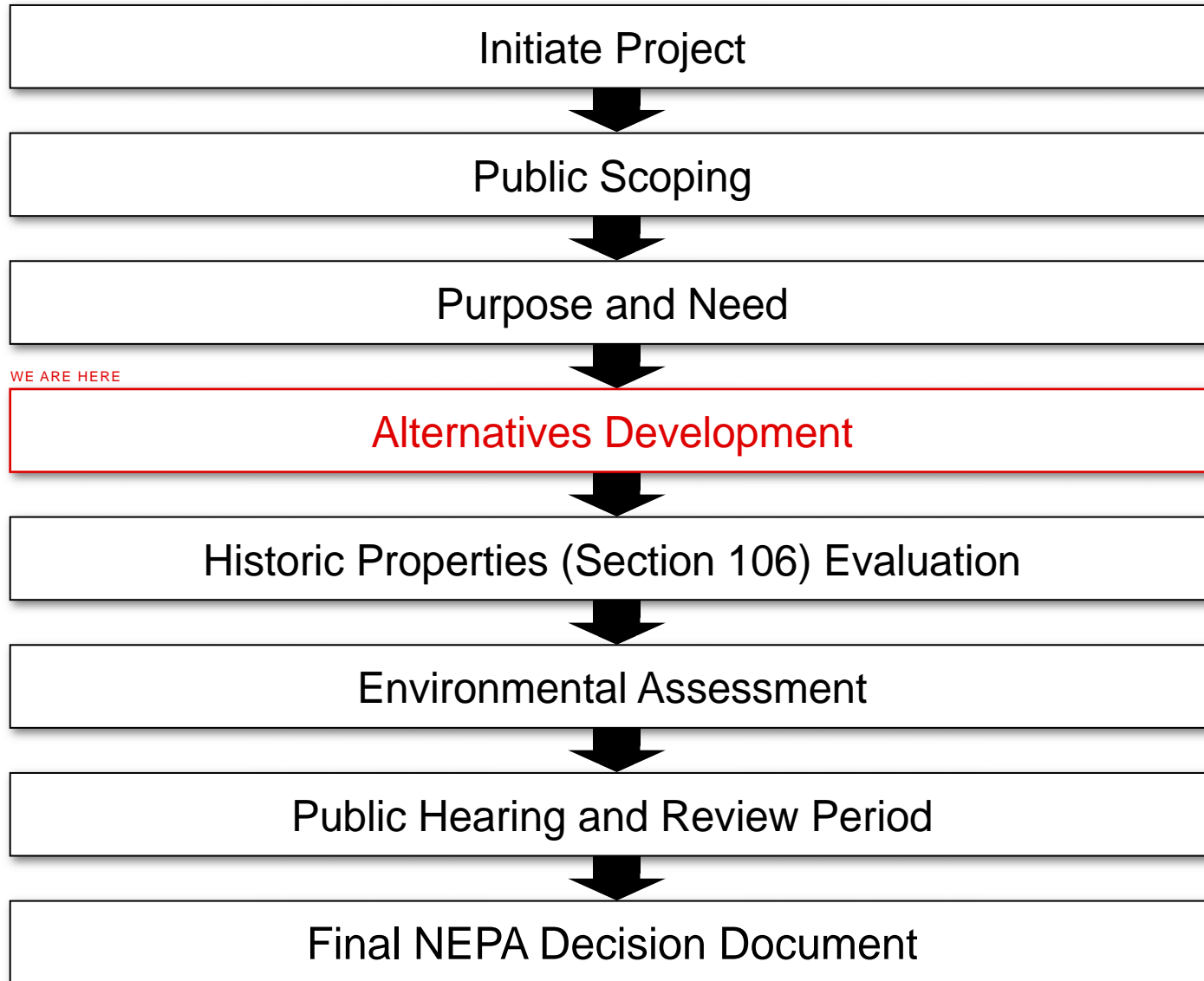
Community Facilities



Traffic / Roadway Features



NEPA ENVIRONMENTAL ASSESSMENT PROCESS



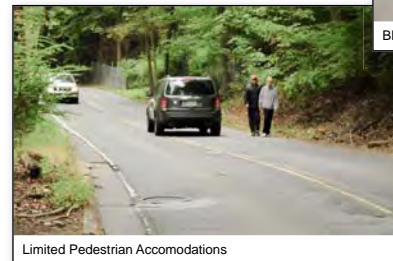
PURPOSE AND NEED

Purpose of Project

- Rehabilitation of Broad Branch Road, NW

Need for Improvements

- Road Conditions
 - Pavement and Geometry
 - Intersection Geometrics
 - Roadway Shoulders
 - Roadway Structures
 - Stormwater Management
- Safety
 - Geometrics
 - Shared Space for Multiple Transportation Modes
- System Linkage (all modes)
 - Linkages to Rock Creek Park Trail, Soapstone Valley Trail



SECTION 106

National Historic Preservation Act

Section 106 of the National Historic Preservation Act requires consultation with the State Historic Preservation Office and other interested parties.



Soapstone Creek Culvert



Grant Road Bridge Detail



Stone Pedestrian Bridge



Circular Brick and Stone Features



Stone Retaining Wall

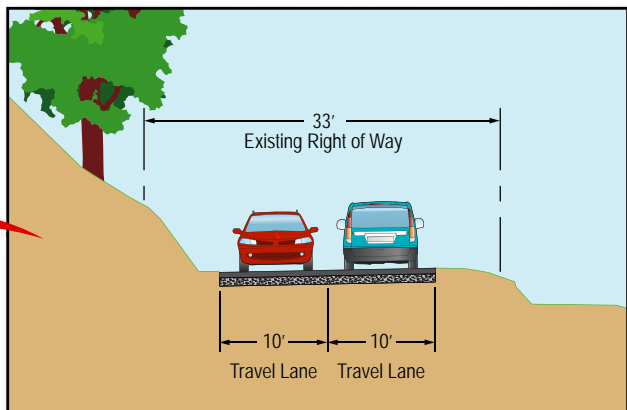
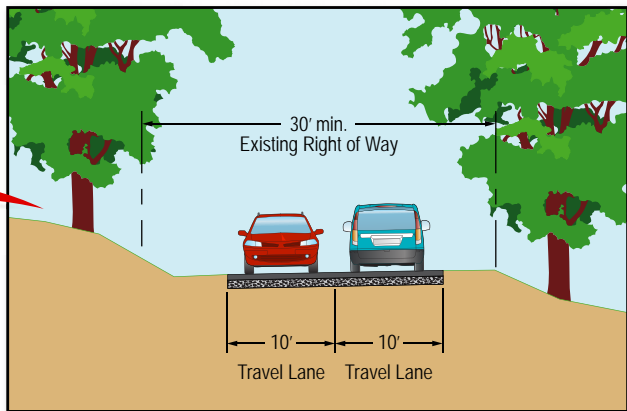
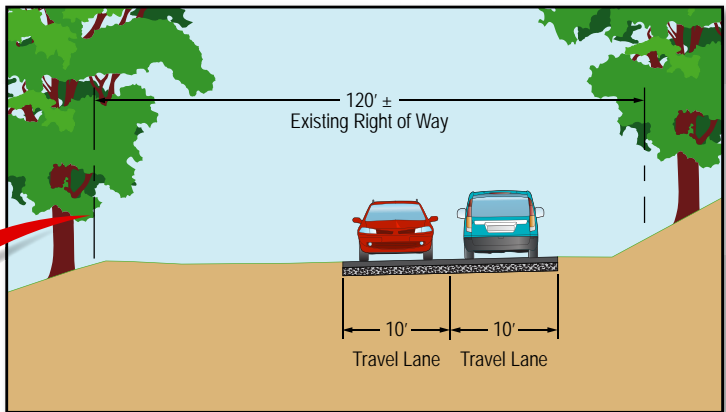
An Assessment of Effect on Cultural Resources will be prepared and summarized in the Environmental Assessment.

Interested parties are invited to participate.

SCHEDULE

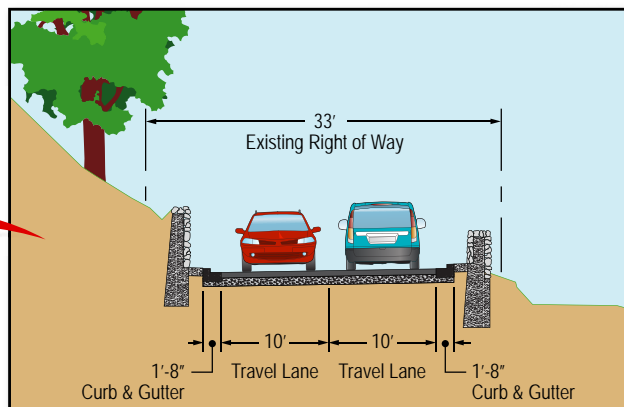
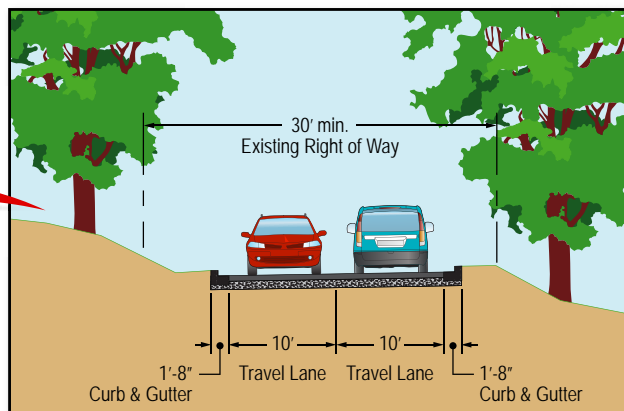
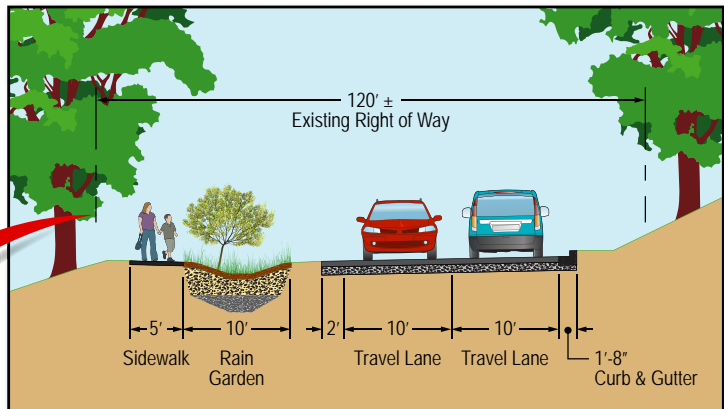
Milestone	Date
Project Kick-off	March 2011
Public Scoping Meeting	July 2011
Initial Alternatives	Summer 2012
<small>WE ARE HERE</small> Public Alternatives Meeting	Fall 2012
Environmental Assessment	Winter 2013
Public Hearing	Spring 2013
Decision Document	Summer 2013

NO ACTION ALTERNATIVE 1



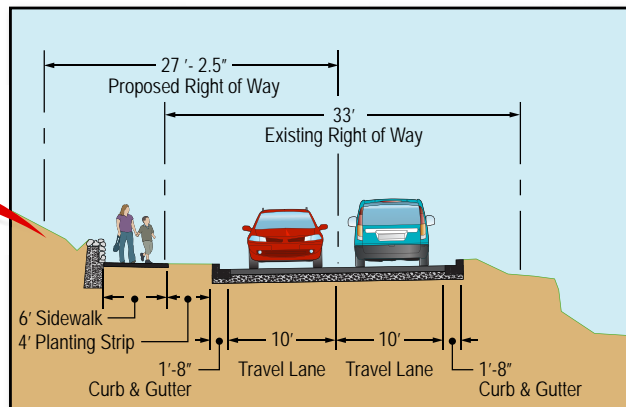
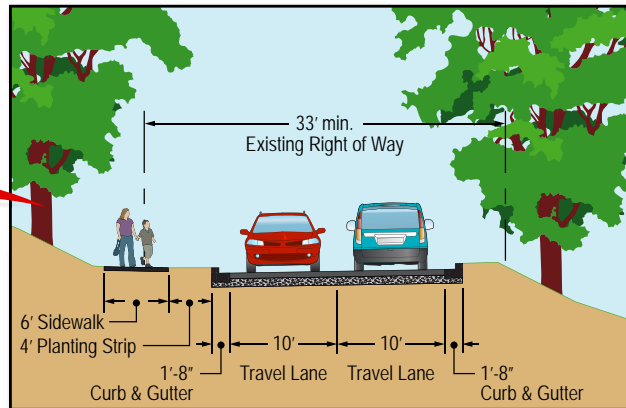
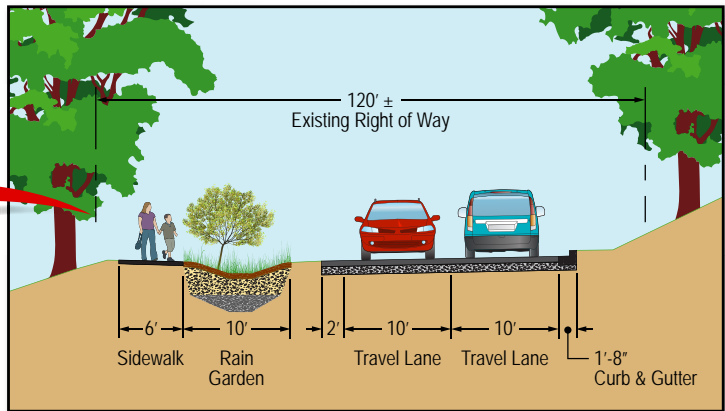
Note: All views are looking northbound along the roadway.

CANDIDATE BUILD ALTERNATIVE 2



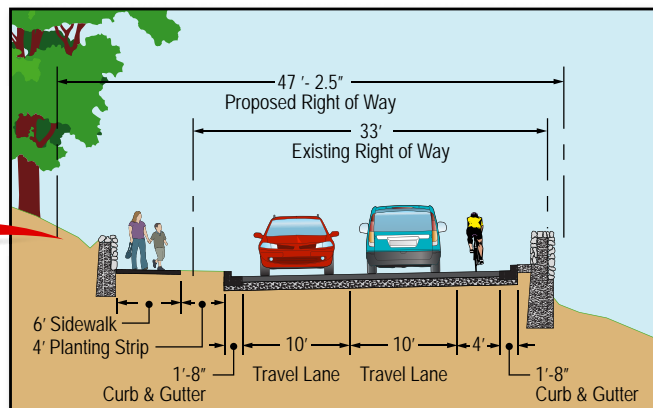
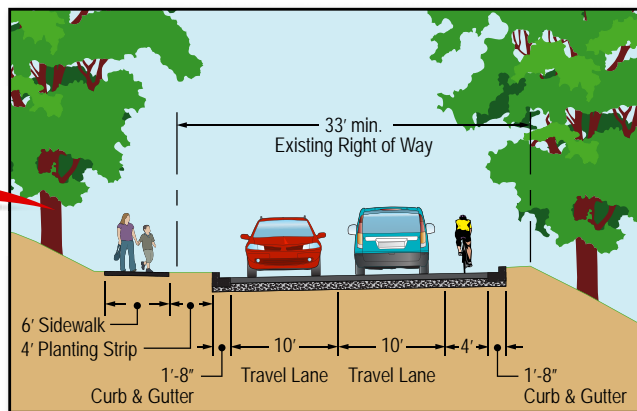
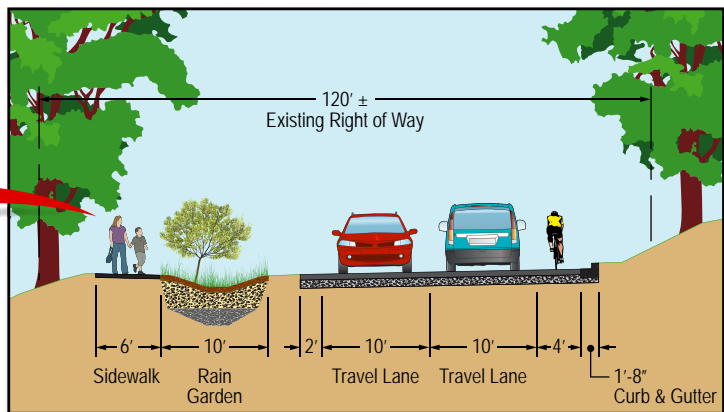
Note: The three illustrations shown above are representative of the typical cross-sections for this alternative; however, they will vary slightly depending on the physical features along the roadway. All views are looking northbound along the roadway.

CANDIDATE BUILD ALTERNATIVE 3



Note: The three illustrations shown above are representative of the typical cross-sections for this alternative; however, they will vary slightly depending on the physical features along the roadway. All views are looking northbound along the roadway.

CANDIDATE BUILD ALTERNATIVE 4



Note: The three illustrations shown above are representative of the typical cross-sections for this alternative; however, they will vary slightly depending on the physical features along the roadway. All views are looking northbound along the roadway.

OPPORTUNITIES FOR PUBLIC COMMENTS

Public Meetings

Public Meeting #1

Public Meeting #2

Public Meeting #3

Public Scoping

Alternatives Review

Public Hearing

July 2011

Tonight

Spring 2013

Tell Us What You Think

Tonight

- Fill out a comment form
- Talk to the Court Reporter

Email

BroadBranch@parsons.com

Website

www.BroadBranchRdEA.com

Mail

Stephen Walter

Parsons Transportation Group

100 M Street, SE, Suite 1200

Washington, DC 20003

