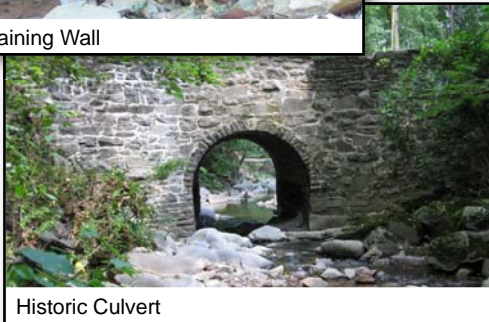


## NATIONAL HISTORIC PRESERVATION ACT (NHPA)

Section 106 of the NHPA requires consultation with the State Historic Preservation Office and other interested parties.



Historic Retaining Wall



Historic Culvert

An Assessment of Effect on Cultural Resources will be prepared and summarized in the Environmental Assessment.

***Interested parties are invited to participate.***

## SCHEDULE

Milestone	Date
Project Kick-off	March 2011
<b>WE ARE HERE</b> <b>Public Scoping Meeting</b>	<b>July 13, 2011</b>
Initial Alternatives	Summer 2011
Public Alternatives Meeting	Summer 2011
Environmental Assessment	Fall 2011
Public Hearing	Fall 2011
Decision Document	Late Fall 2011

*DDOT is committed to ensuring that no person is excluded from participation in, or denied the benefits of, its projects, programs, and services on the basis of race, color, national origin, or gender, as provided by Title VI of the Civil Rights Act of 1964 or on the basis of disability as provided by the Americans with Disabilities Act.*

## OPPORTUNITIES FOR PUBLIC COMMENT

### Public Meetings

Public Meeting #1 – Tonight  
Public Scoping

Public Meeting #2 – Summer 2011  
Alternatives Review

Public Meeting #3 – Fall 2011  
Public Hearing on Environmental Assessment

### Tell Us What You Think

#### Tonight

- Fill out a comment form
- Talk to the Court Reporter

#### Email

BroadBranch@parsons.com

#### Mail

Stephen Walter  
Parsons Transportation Group  
100 M Street, SE, Suite 1200  
Washington, DC 20003

#### Project Website

[www.BroadBranchRdEA.com](http://www.BroadBranchRdEA.com)

*Thank you for your interest and participation in this project.*

**Wayne Wilson, DDOT Project Manager**

202.671.4582

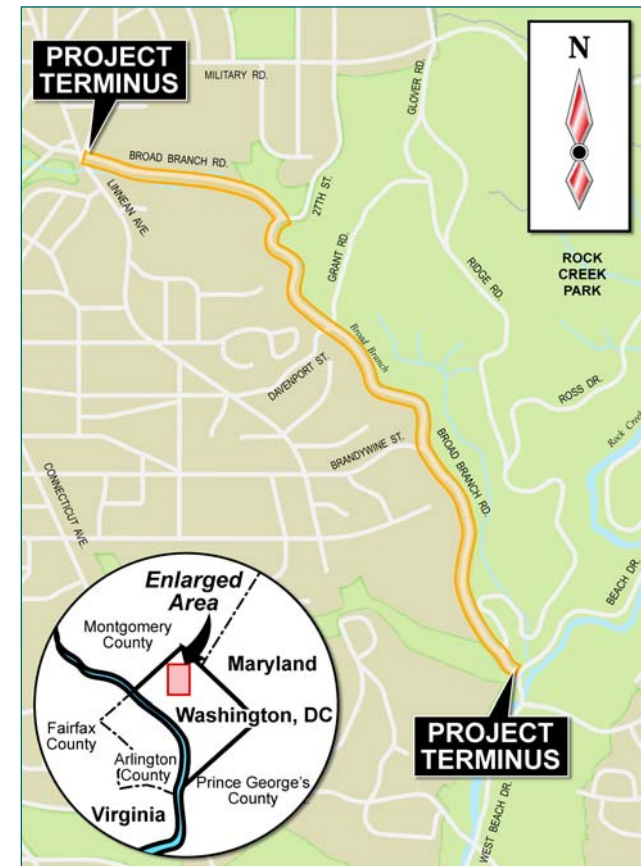
District Department of Transportation  
Infrastructure Project Management Administration  
55 M Street, SE  
Washington, DC 20003

# Broad Branch Road

## ENVIRONMENTAL ASSESSMENT

## PUBLIC SCOPING MEETING

July 13, 2011  
6:00 pm – 8:00 pm



## Purpose of Project

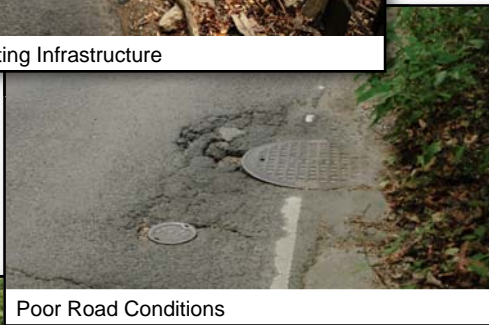
- Rehabilitation of Broad Branch Road, NW

## Need for Improvements

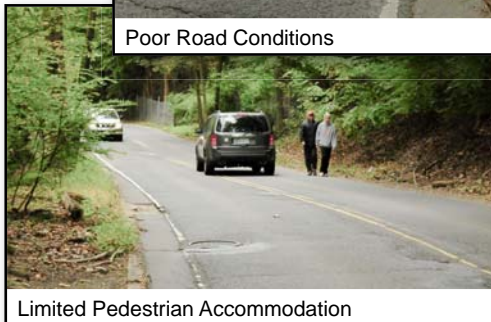
- Road Conditions
  - Pavement and Geometry
  - Intersection Geometrics
  - Roadway Shoulders
  - Roadway Structures
  - Stormwater Management
- Safety
  - Geometrics
  - Shared Space for Multiple Transportation Modes
- System Linkage (all modes)
  - Linkages to Rock Creek Park Trail, Soapstone Valley Trail



Deteriorating Infrastructure

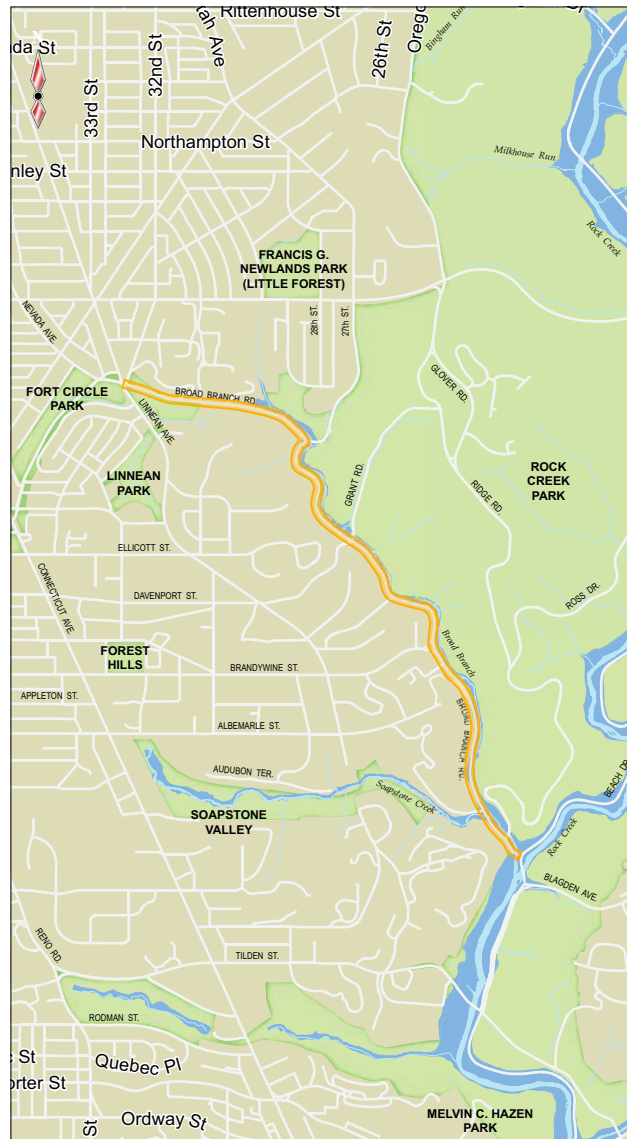


Poor Road Conditions



Limited Pedestrian Accommodation

## Natural Resources



## Community Resources



= Stream

= Floodplain

= Park

= Community Facility

= School

= University

= Embassy

= Embassy Residence

= Nursing Home

= Fire House

= Church

= Synagogue