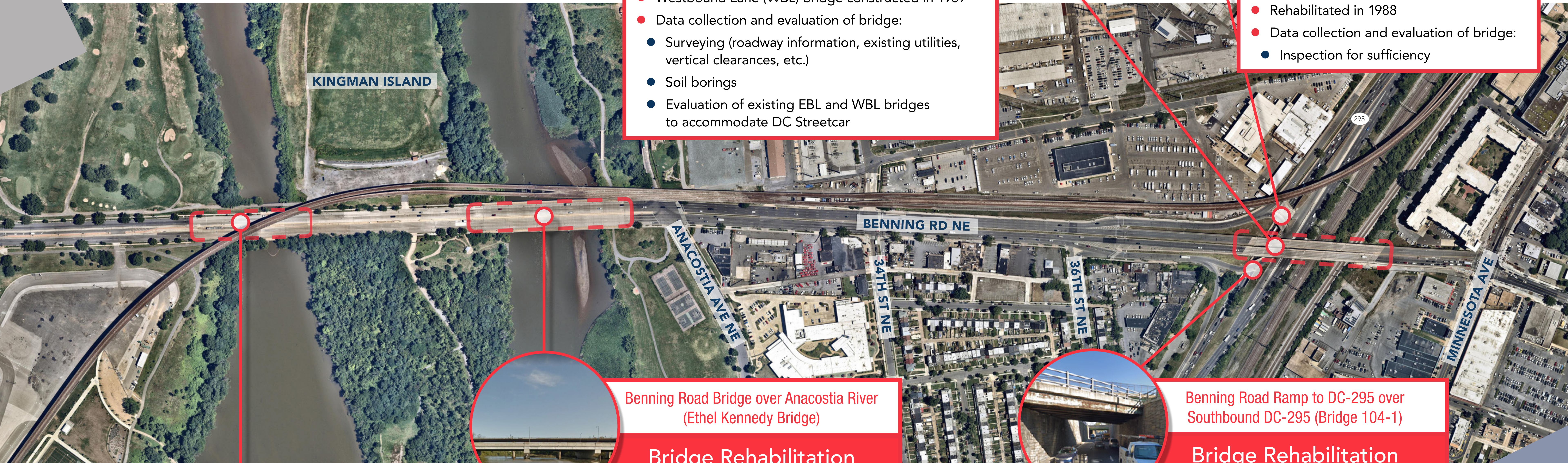


# Benning Road Bridges



## BENNING ROAD Reconstruction and Streetcar Project



### Benning Road Bridge over Kenilworth Ave, DC-295, and CSXT (Lorraine H. Whitlock Memorial Bridge)

#### Bridge Replacement

- Eastbound Lane (EBL) bridge constructed in 1959
- Westbound Lane (WBL) bridge constructed in 1969
- Data collection and evaluation of bridge:
  - Surveying (roadway information, existing utilities, vertical clearances, etc.)
  - Soil borings
  - Evaluation of existing EBL and WBL bridges to accommodate DC Streetcar

### Ramp to Benning Road over Southbound DC-295 (Bridge 104)

#### Bridge Rehabilitation

- Constructed in 1955
- Rehabilitated in 1988
- Data collection and evaluation of bridge:
  - Inspection for sufficiency

### Benning Road Bridge over Anacostia River (Ethel Kennedy Bridge)

#### Bridge Rehabilitation

- Replaced in 2004
- Data collection and evaluation of bridge:
  - Surveying (roadway data, existing utilities, etc.)
  - Hands-on inspection
  - Soil borings
  - Lifecycle analysis of the bridge

### Benning Road Ramp to DC-295 over Southbound DC-295 (Bridge 104-1)

#### Bridge Rehabilitation

- Constructed in 1955
- Data collection and evaluation of bridge:
  - Inspection for sufficiency

### Benning Road Bridge over Kingman Lake

#### Bridge Rehabilitation

- Reconstructed in 2000
- Data collection and evaluation of bridge:
  - Surveying (roadway data, existing utilities, etc.)
  - Hands-on inspection
  - Soil borings
  - Lifecycle analysis of the bridge

For each bridge, DDOT will use the data collection and evaluation process to determine:

- Ability to support streetcar extension
- Rehabilitation and/or replacement needs by bridge component
- Pedestrian and bicyclist access and safety

DDOT will bring initial bridge concepts to the public for feedback.