

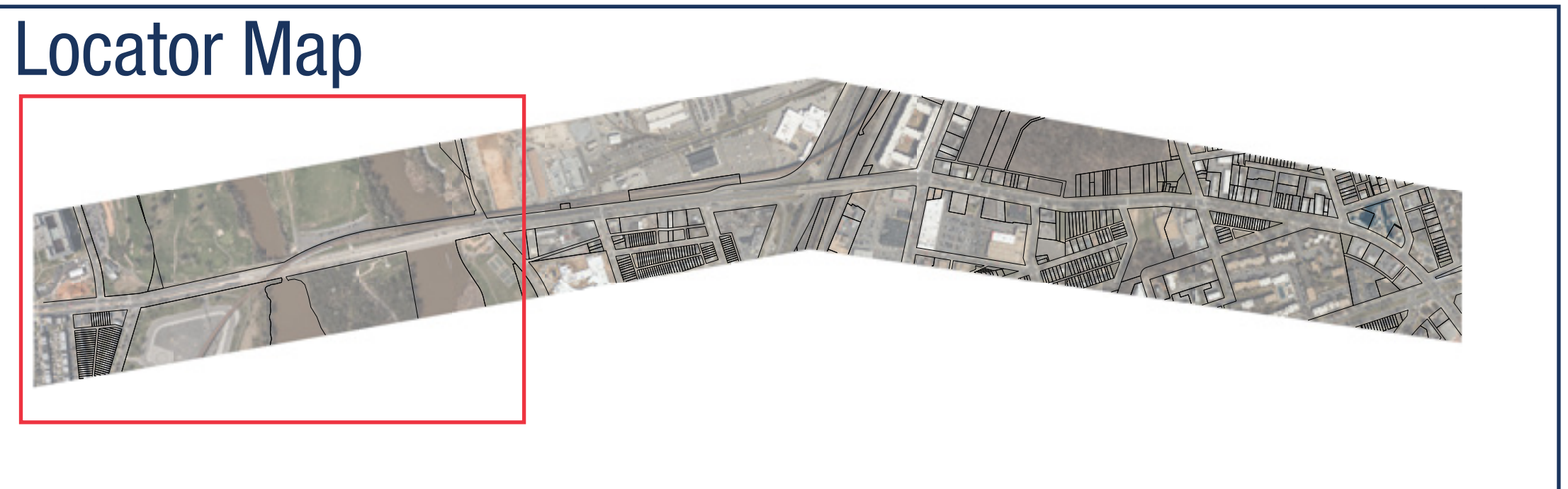
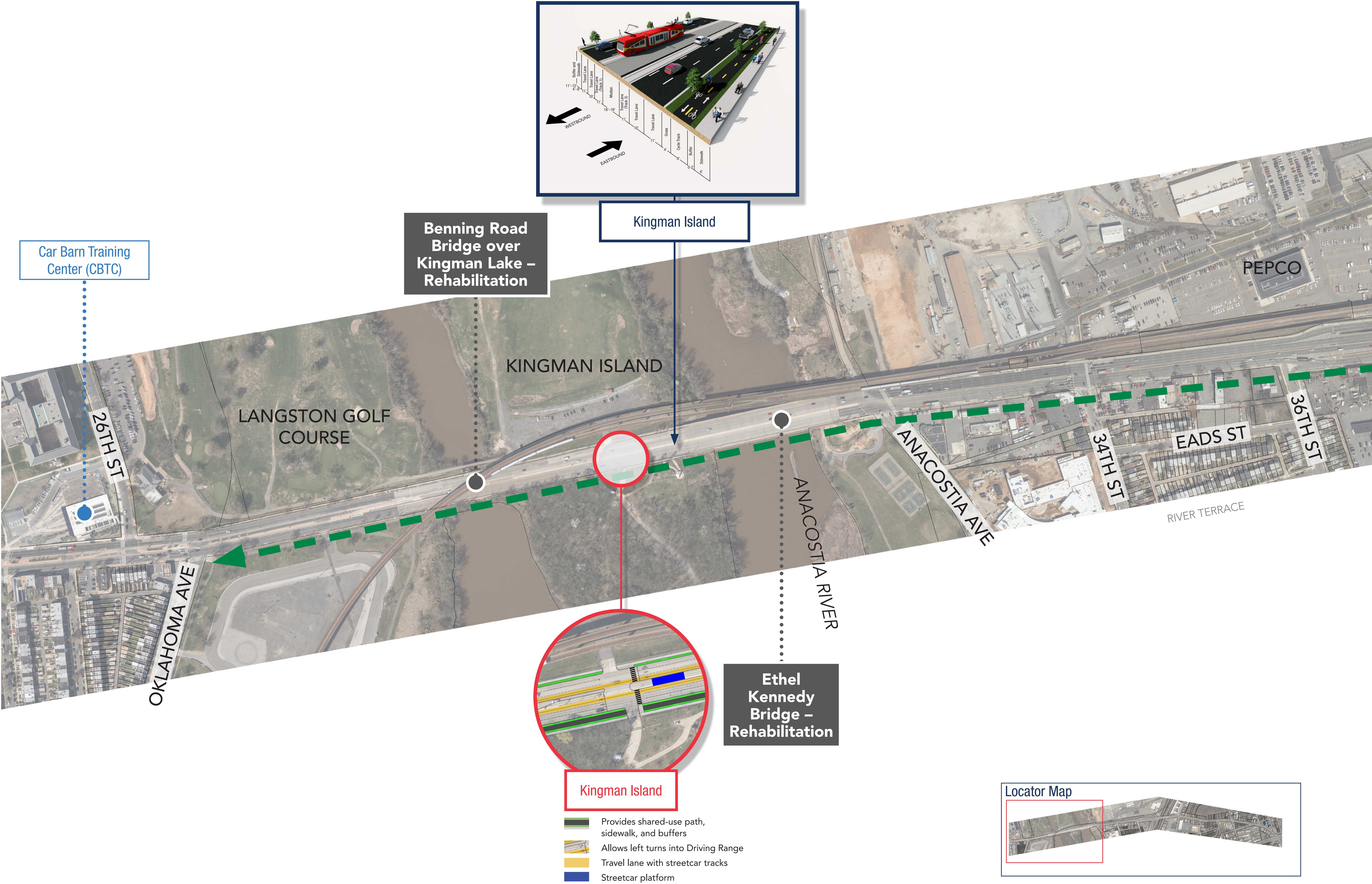
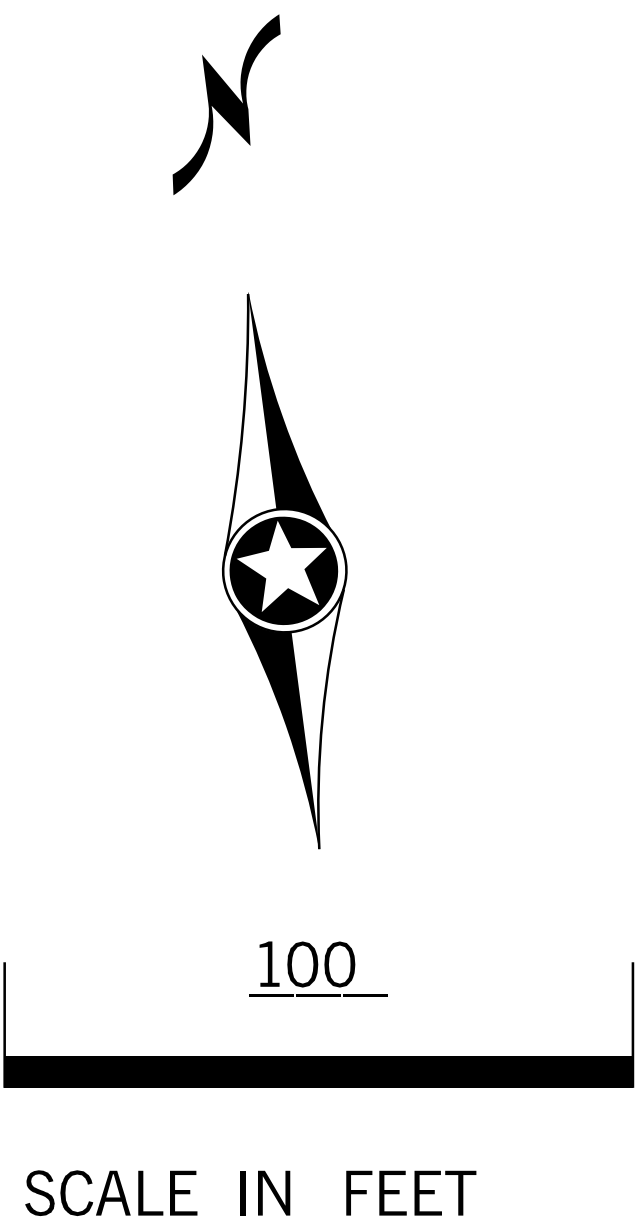
What will the street look like at this location?

What choices are available for the configuration of the stops?

←

IMPROVED BICYCLE/PEDESTRIAN FACILITIES

→



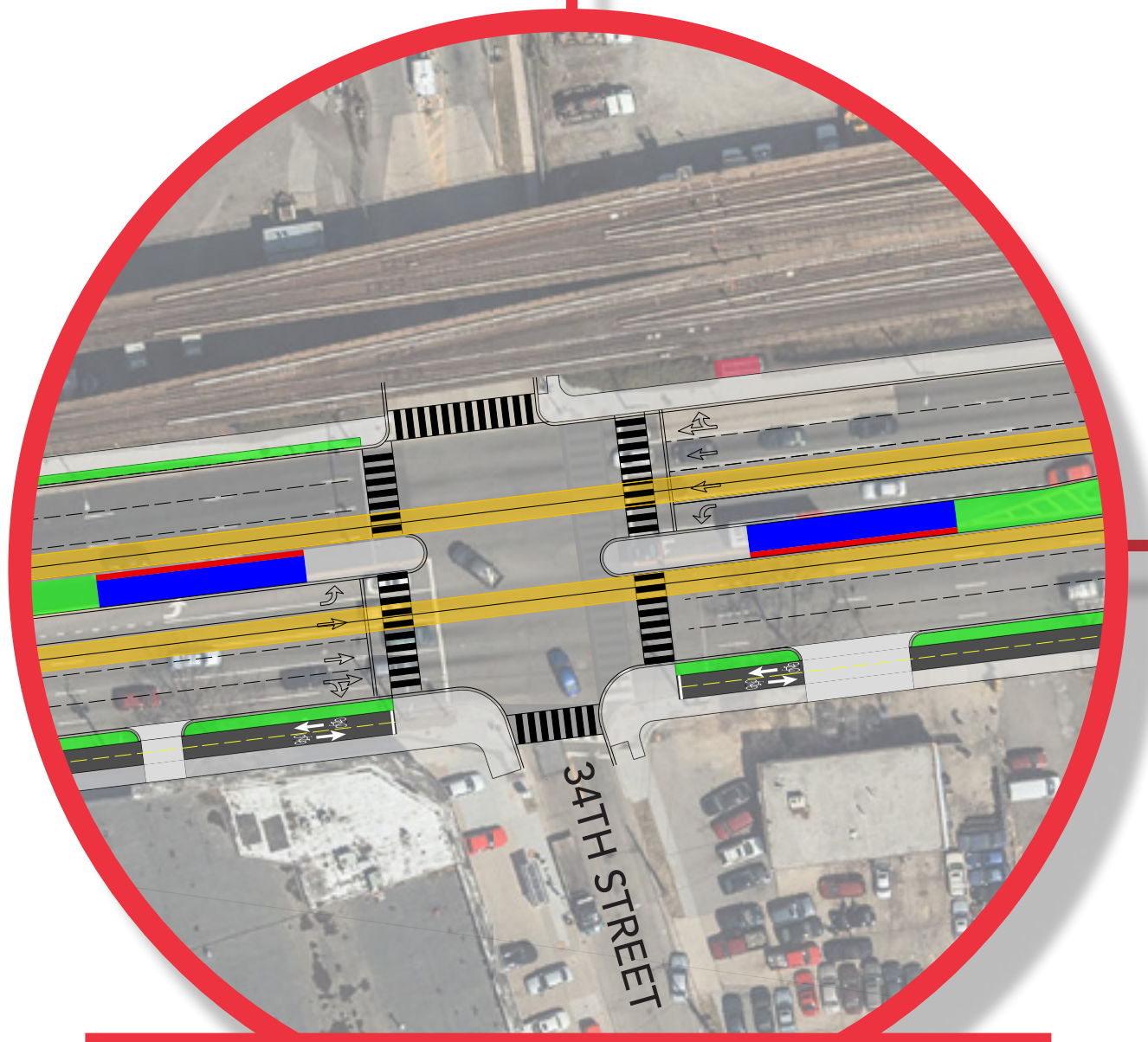
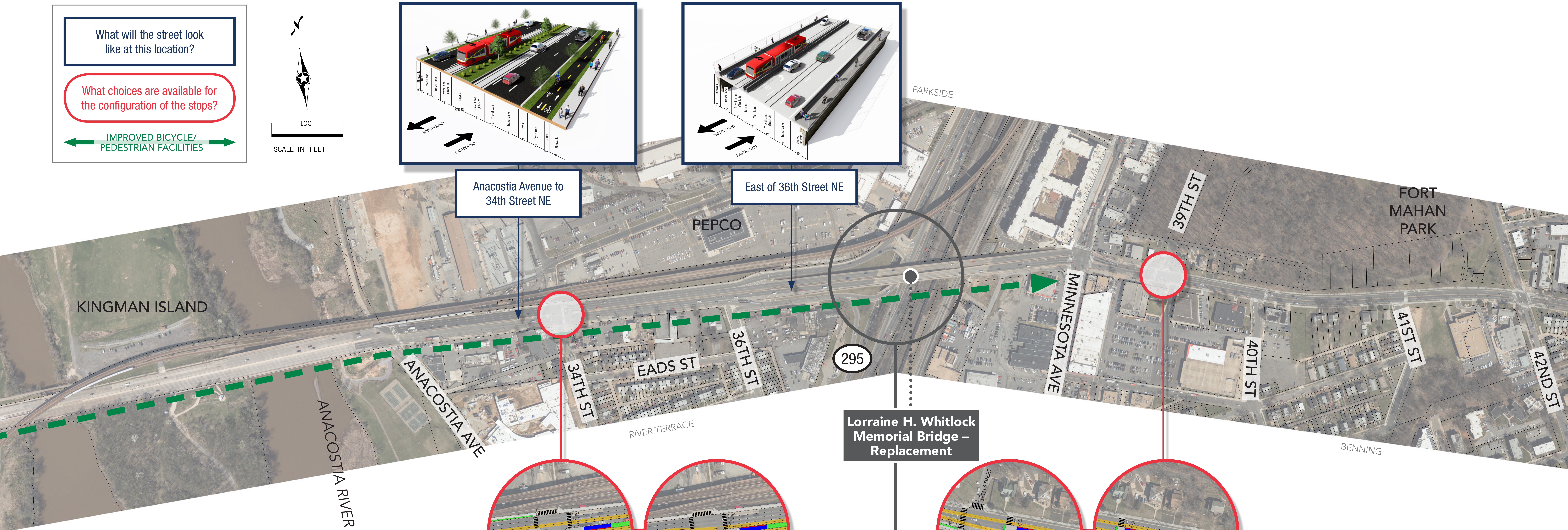
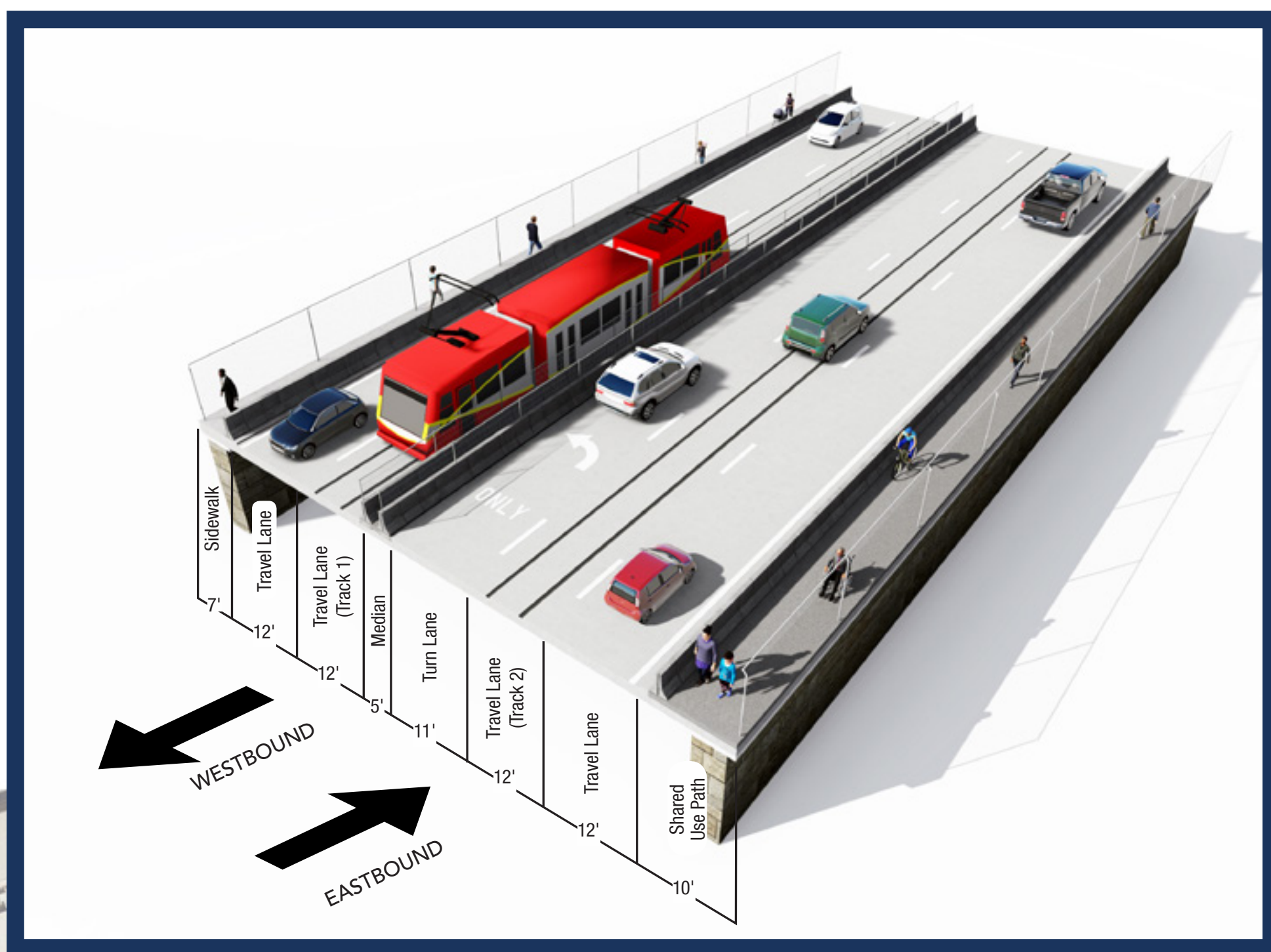
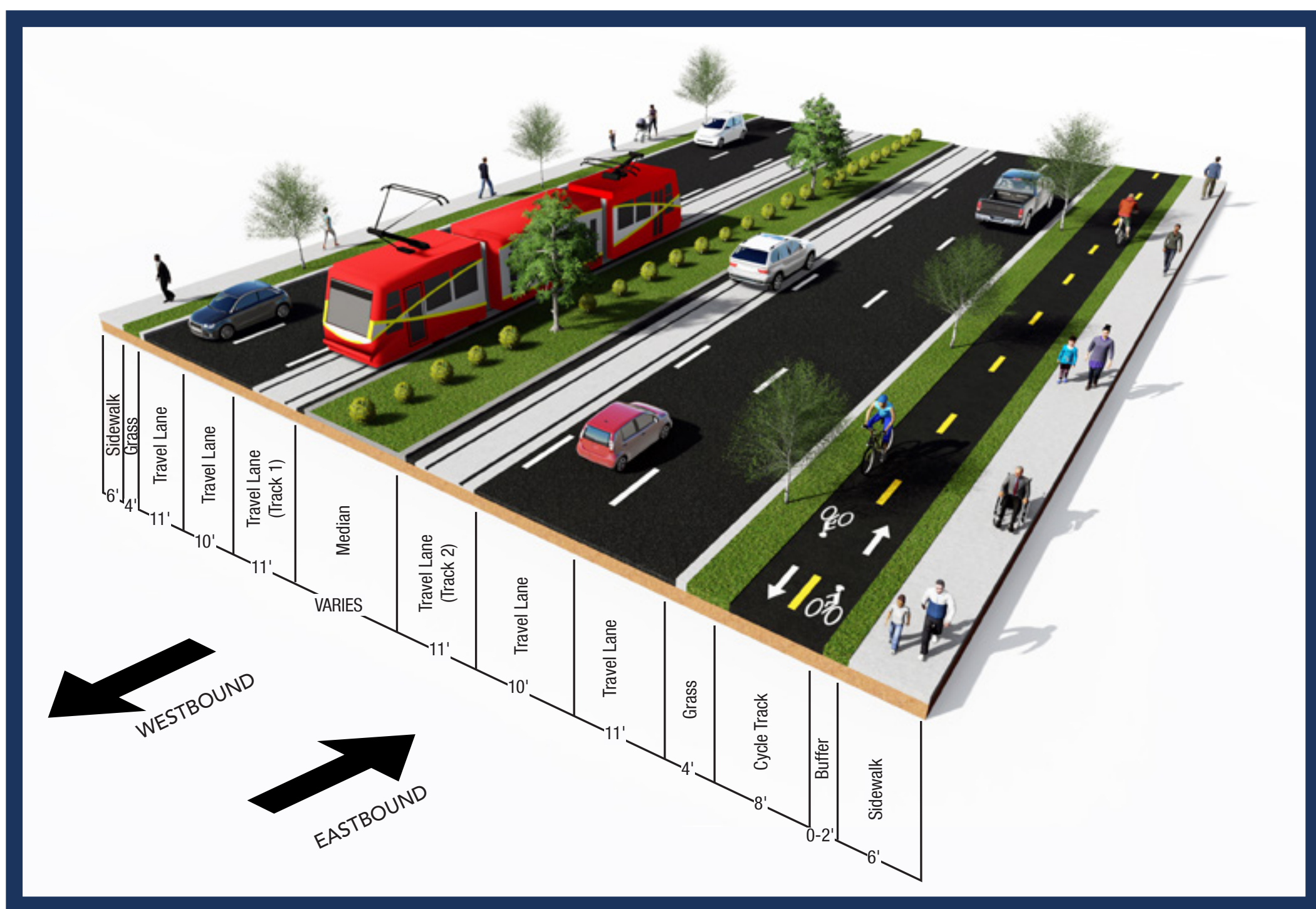
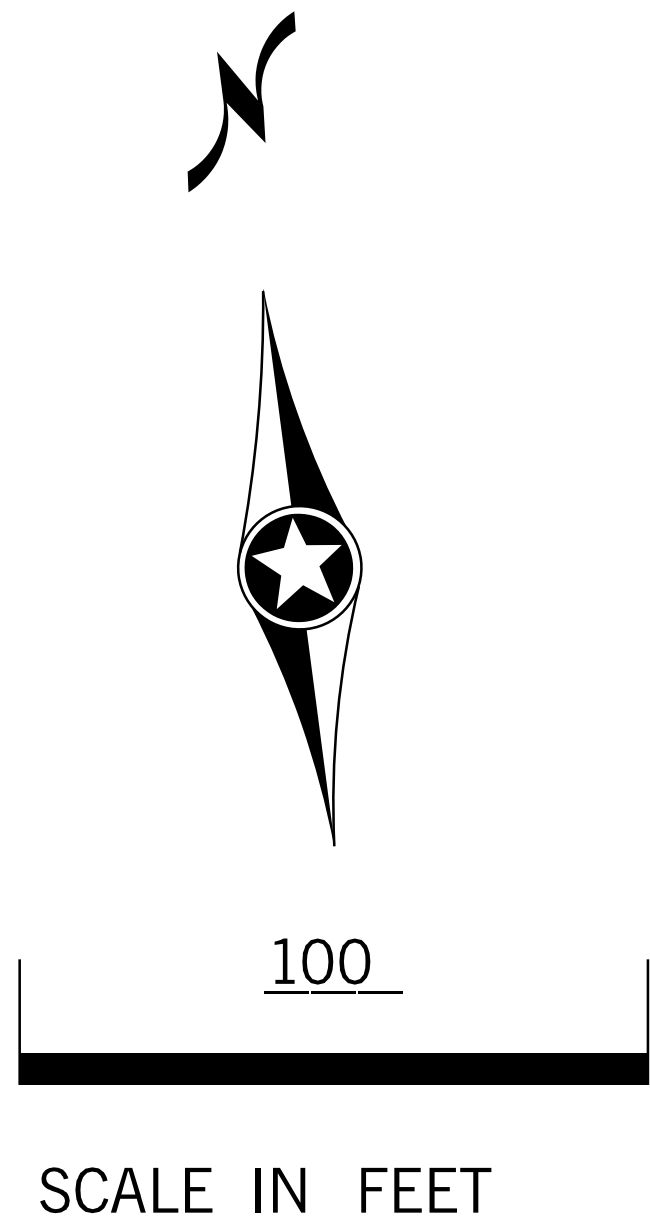
What will the street look like at this location?

What choices are available for the configuration of the stops?

←

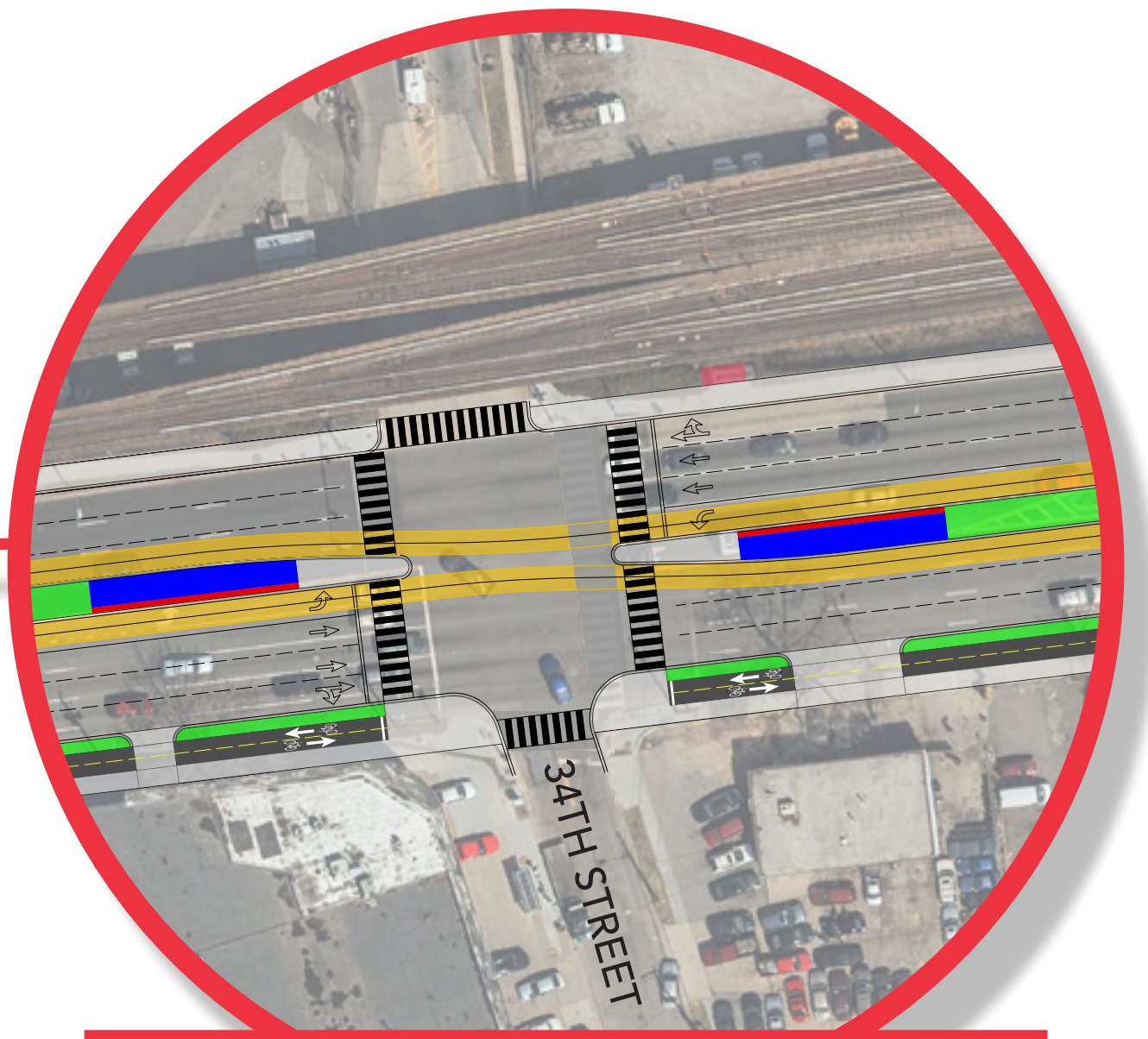
IMPROVED BICYCLE/PEDESTRIAN FACILITIES

→



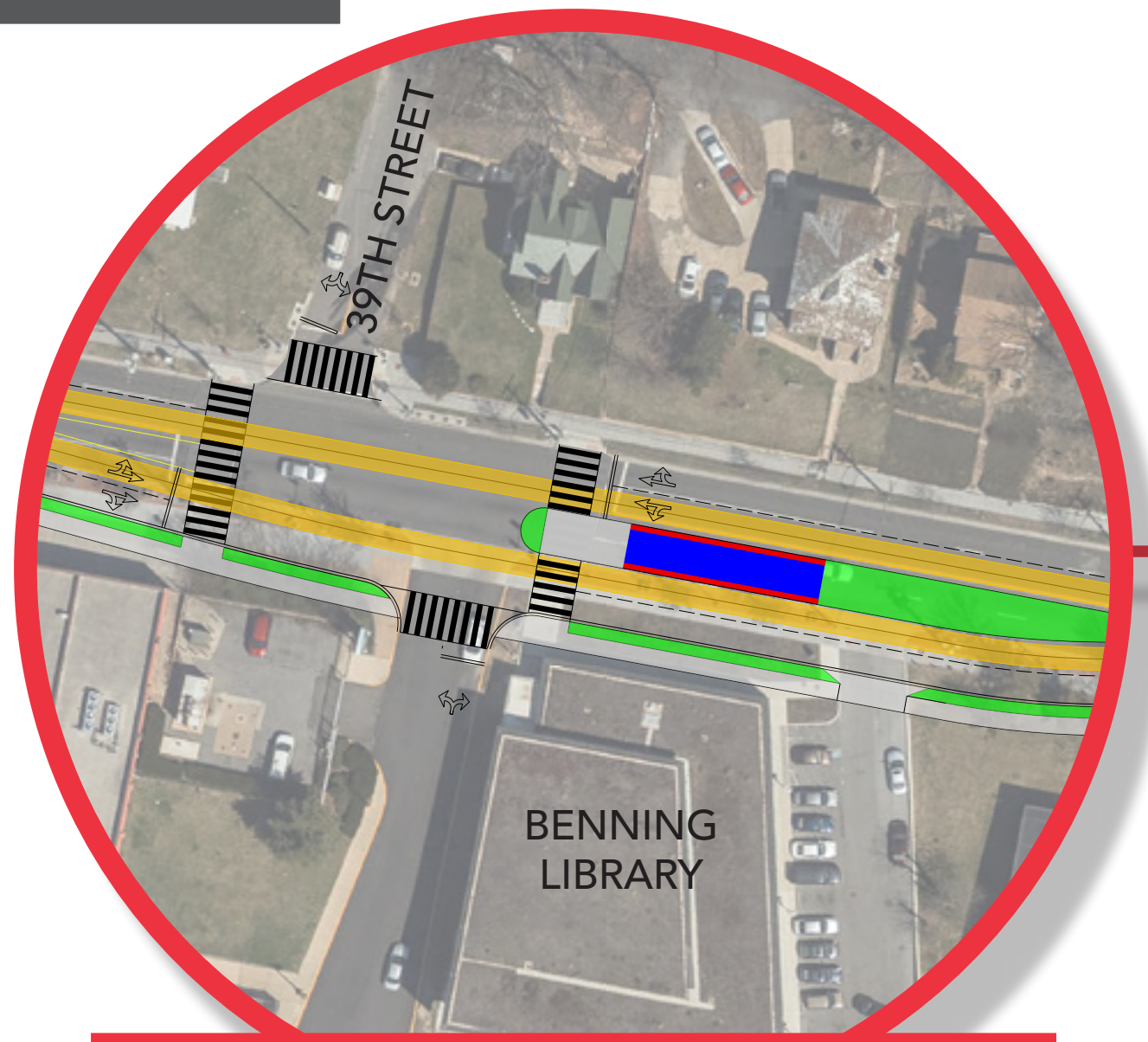
34th Street – Option 1

- One platform for each direction
- Provides dedicated left-turn lanes
- Travel lane with streetcar tracks
- Cycle-track



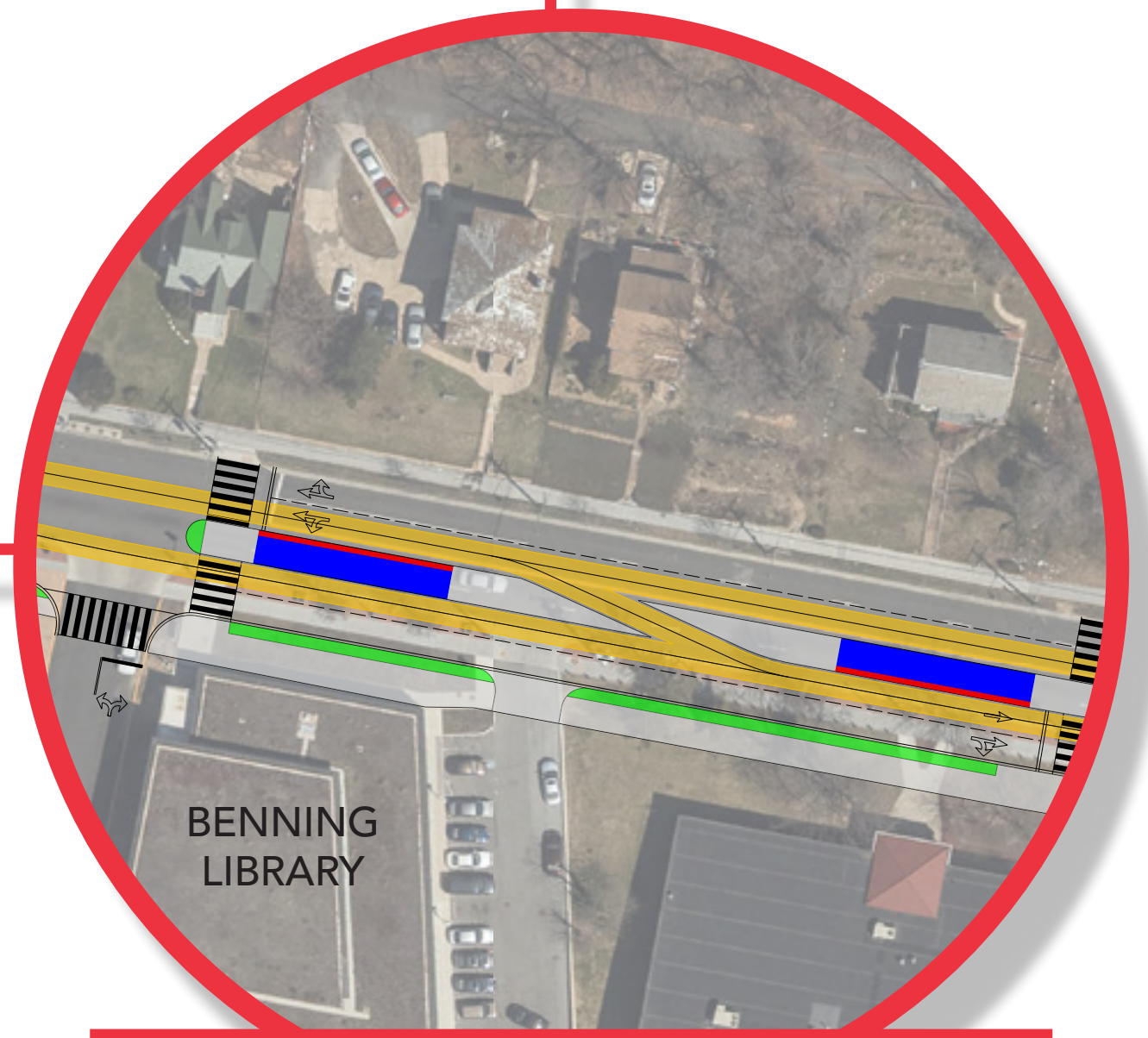
34th Street – Option 2

- One platform for each direction
- Streetcar stop shared with left-turn lane
- Travel lane with streetcar tracks
- Cycle-track



39th Street – Option 1

- One platform located at Benning Library
- Travel lane with streetcar tracks

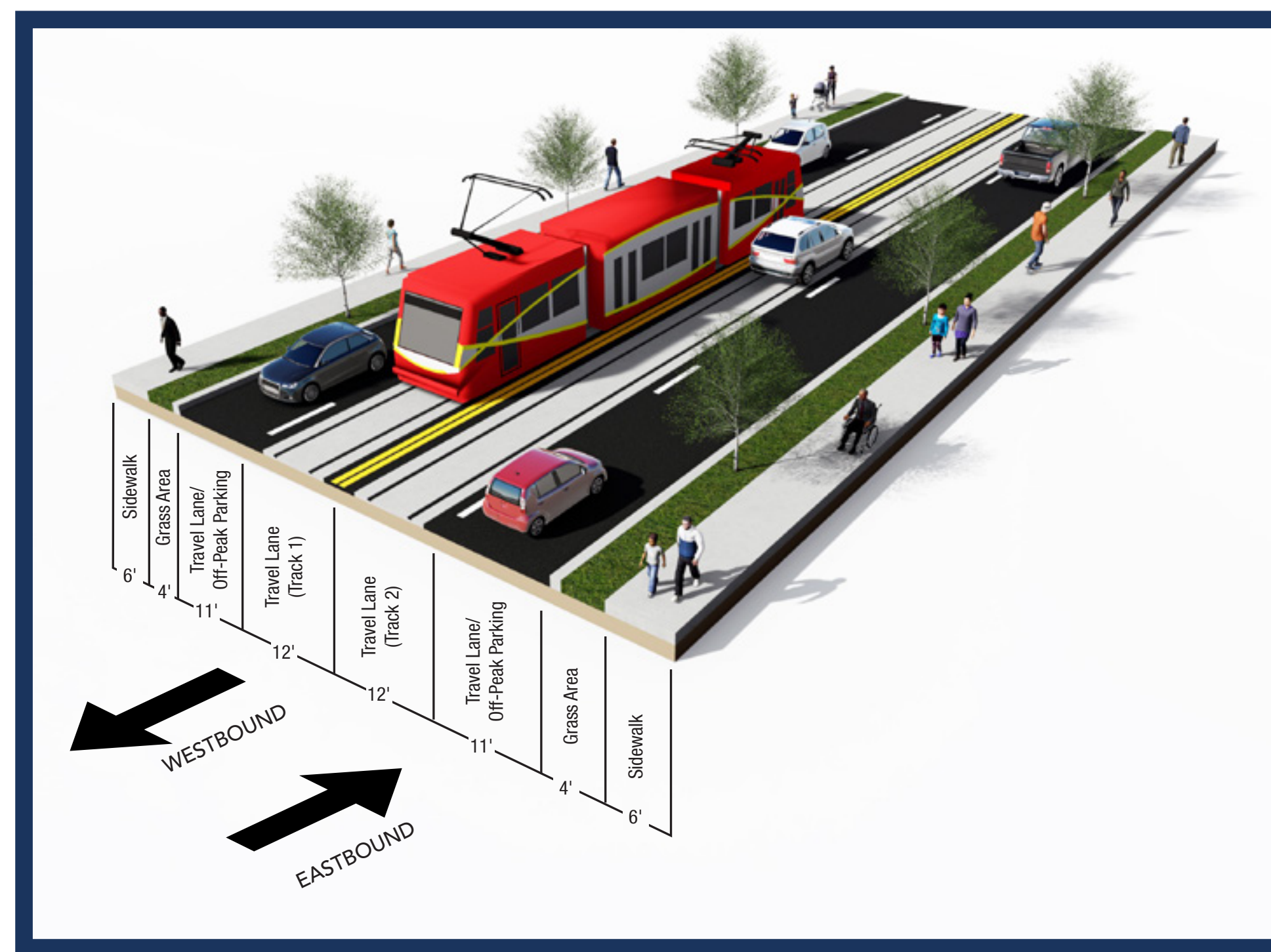
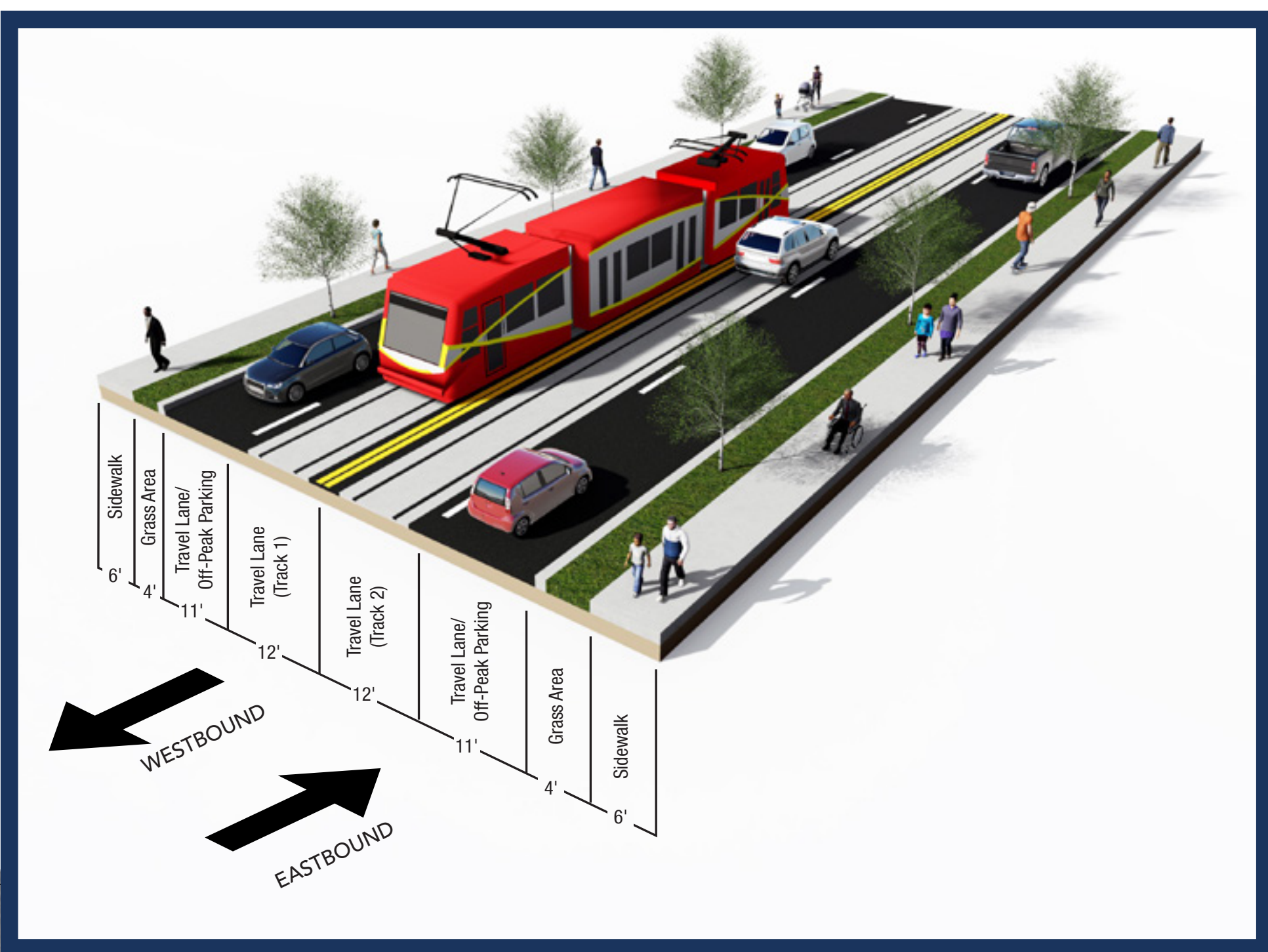
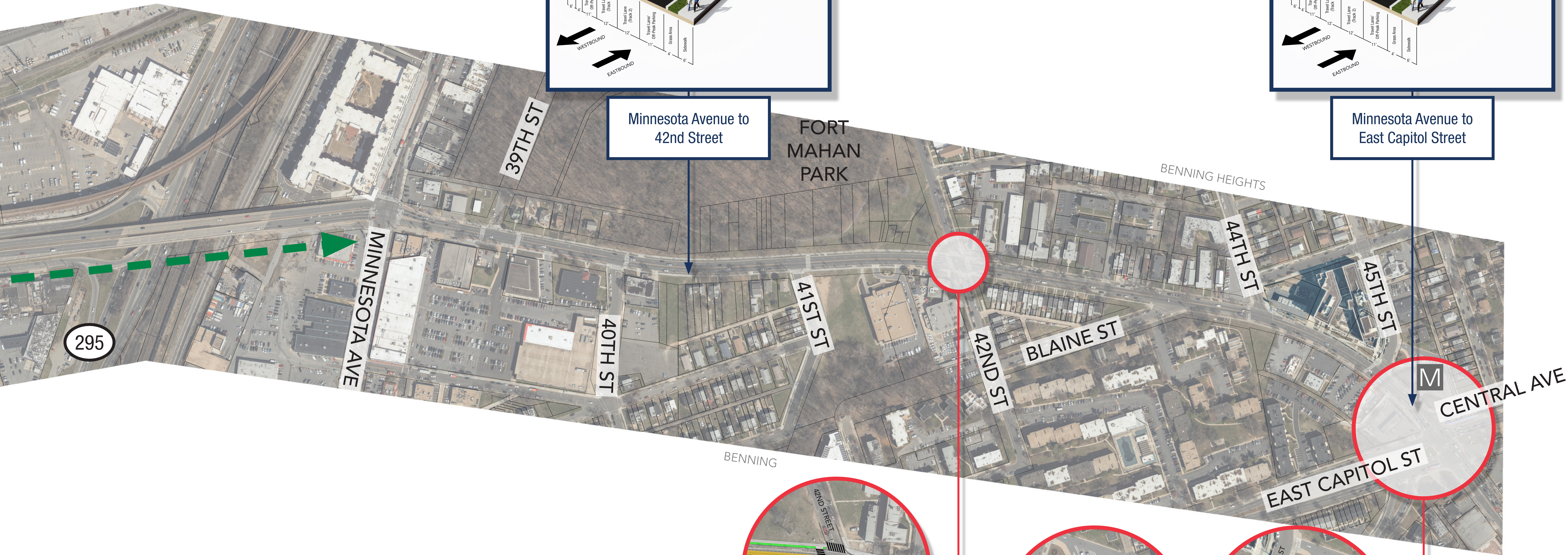


39th Street – Option 2

- One platform for each direction
- Travel lane with streetcar tracks

DC-295/Benning Road Interchange Modification Study

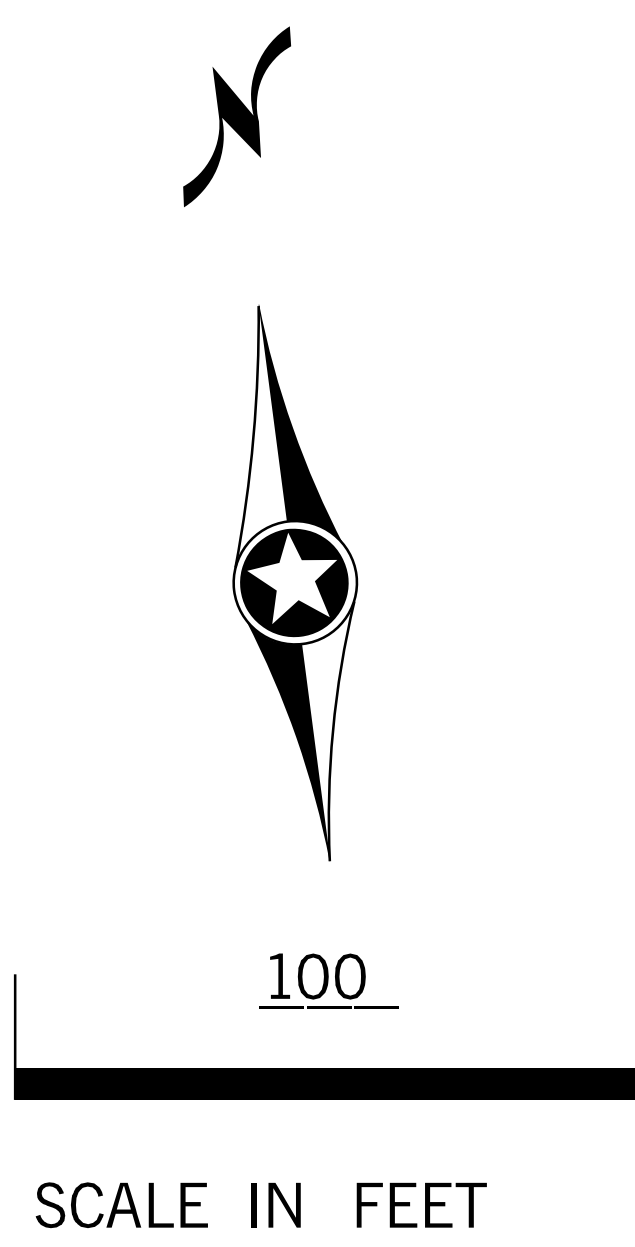




What will the street look like at this location?

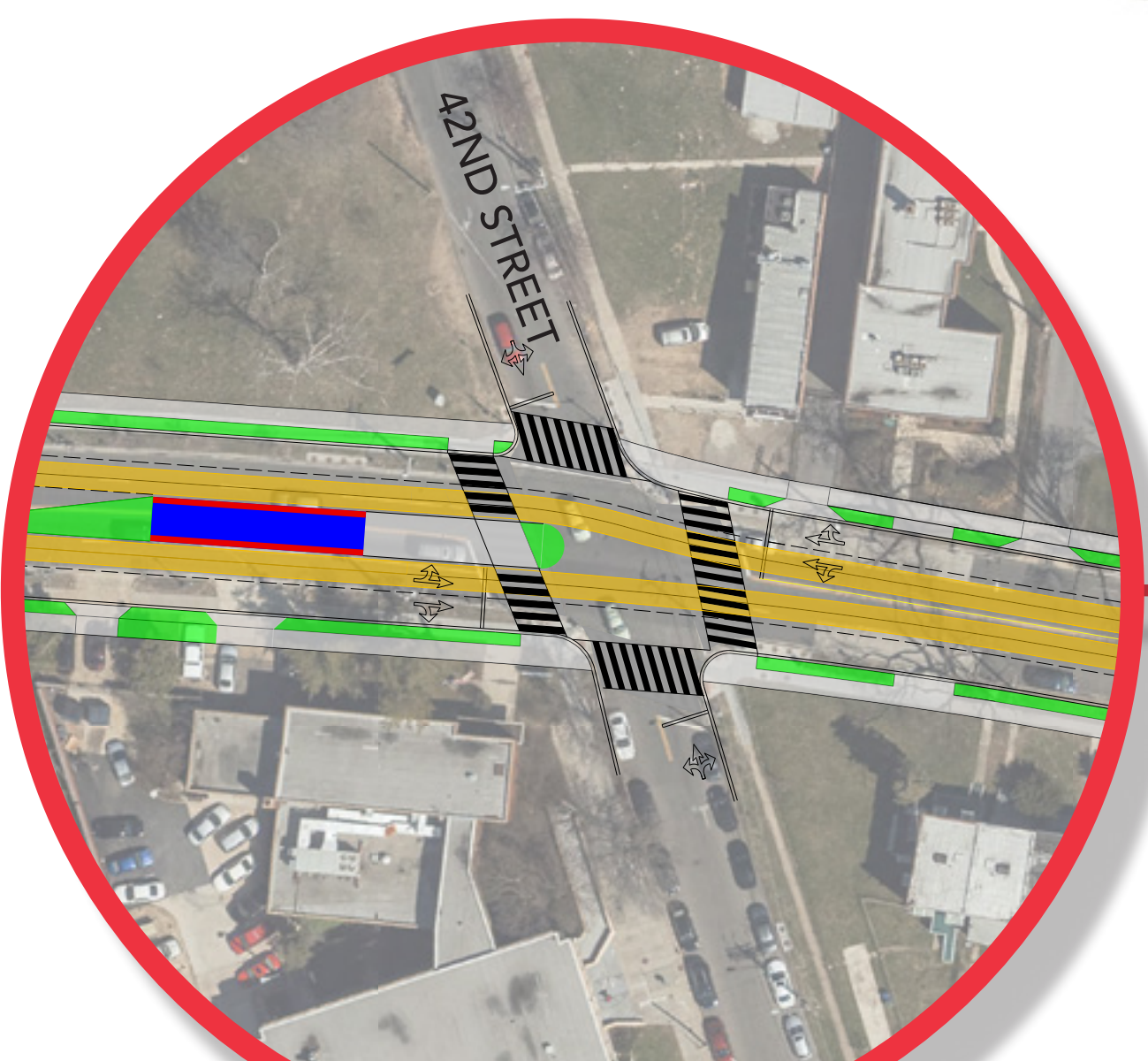
What choices are available for the configuration of the stops?

← IMPROVED BICYCLE/PEDESTRIAN FACILITIES →



Minnesota Avenue to 42nd Street

Minnesota Avenue to East Capitol Street

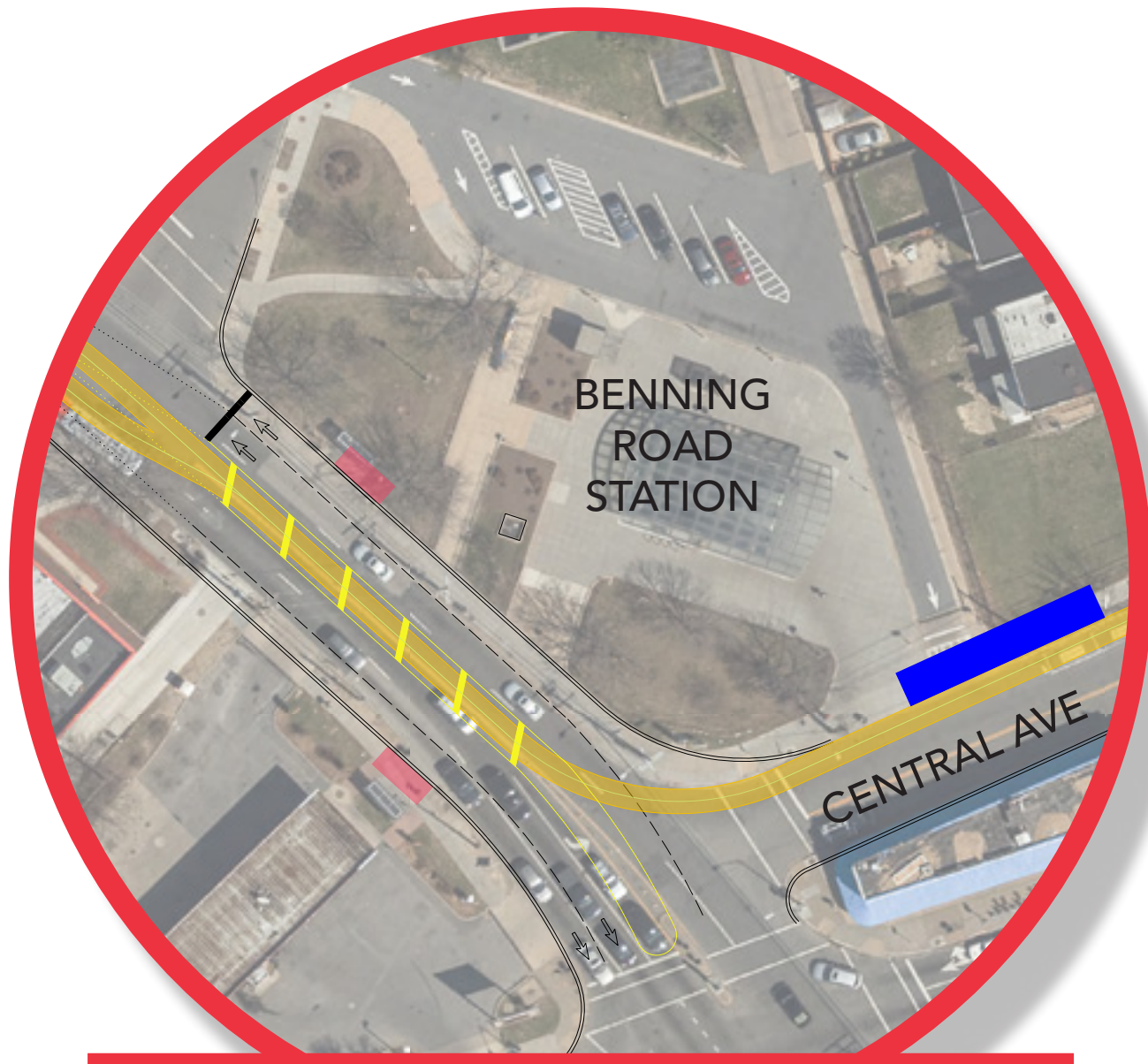


42nd Street

- One platform shared on west side of intersection
- Travel lane with streetcar tracks

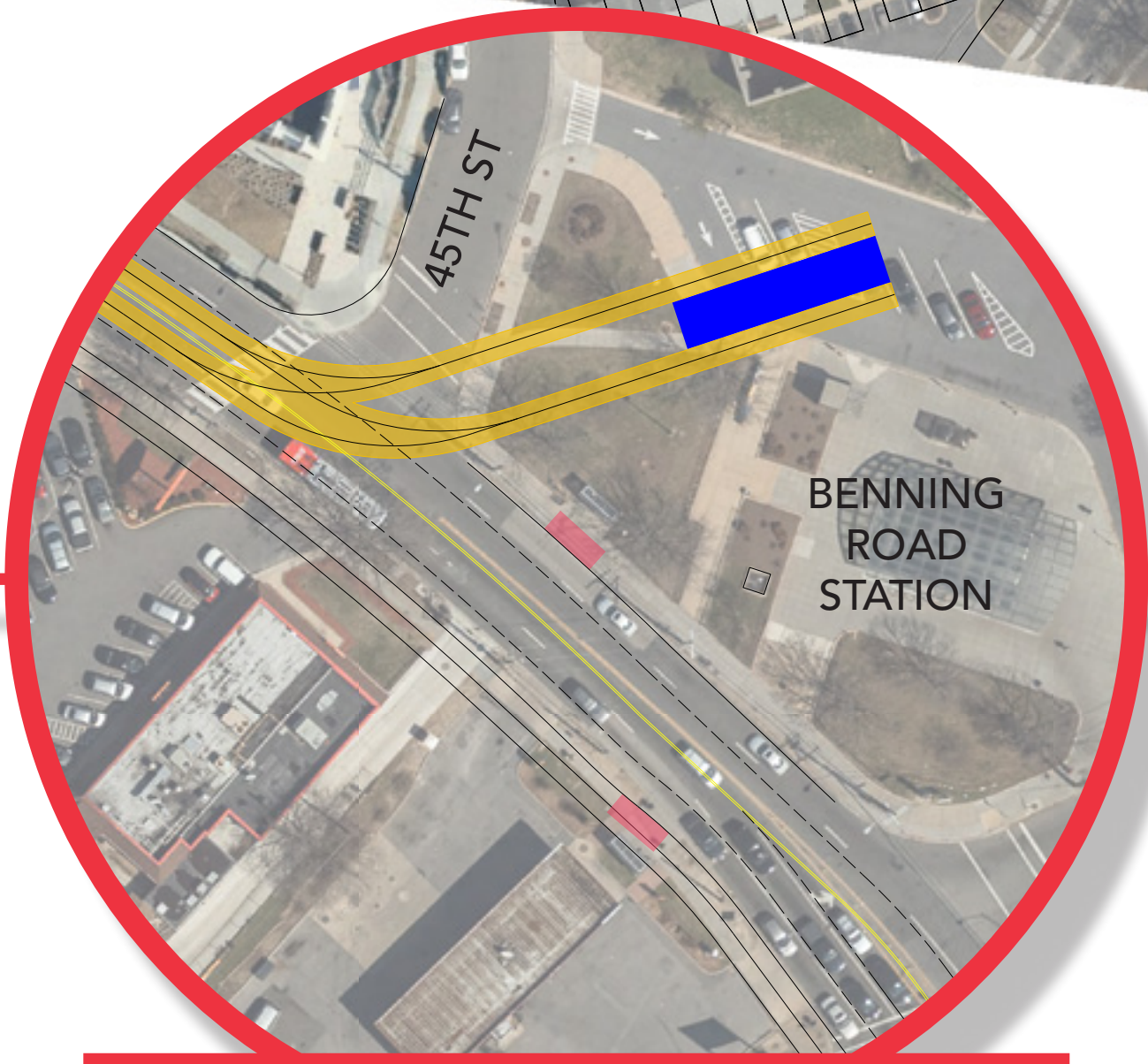
*modified from draft EA in order to:

- mitigate parking impacts
- maintain access at the northeast corner of Benning Road and 42nd Street



End of Line – Option 1

- Transit Plaza on Central Avenue
- Seamless transfer to streetcar
- Expanded plaza area
- Easy access to Metrobus routes



End of Line – Option 2

- Modified Metro Plaza with Streetcar
- Seamless transfer to streetcar
- Easy access to V7/V8 Metrobus Routes (less accessible to Routes 96/97)

